

KANSAS DEPARTMENT OF TRANSPORTATION

STATE OFFICE BUILDING—TOPEKA, KANSAS 66612



JOHN B. KEMP, Secretary of Transportation

JOHN CARLIN, Governor

March 23, 1984

Right of Way
Sedgwick County
235-87 I 235-1 (6) 42
C/A 124

Kenny E. Hill, P.E.
Project Manager
Poe & Associates of Kansas, Inc.
P. O. Box 11185
Wichita, Kansas 67202

Re: Tract 51
K-2409-01, P

Dear Mr. Hill:

This is in reference to my letter of March 14, 1984, regarding the entrance to the mobile home park owned by Richard Alcorn.

In the letter, I stated that the subject entrance was located right of Sta. 972+40. This is to inform you that this station was in error, and the correct location is Sta. 1053+52. I am enclosing a sketch showing the entrance. There is no change in the information given in the original letter; only the location of the entrance has been changed.

Sorry for any inconvenience this may have caused you.

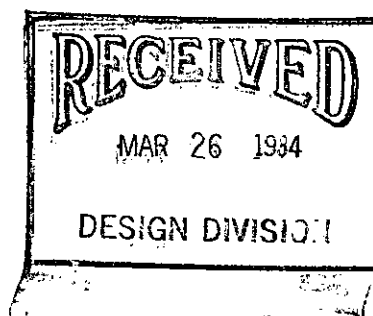
Yours truly,

JOSEPH KRAHN, CHIEF
BUREAU OF RIGHT OF WAY

P. R. Gilman, P.E.
Engineering Assistant to
Chief of Right of Way

JK:PRG:pm
Enc.

cc: F. J. Reid
M. S. Fry
Larry Henry ✓
Louise Olivarez



3. Spk. 4. Spk. 42-87-F022-1(6) NE 1/4 Sec 2-T285-A

PROJECT NO. 399

Lee J. Sprou (9) 1.61

Sta. 1058+25 Install 1.50' x 48' S.R.P. / M.A.C. See Sh. No. 62

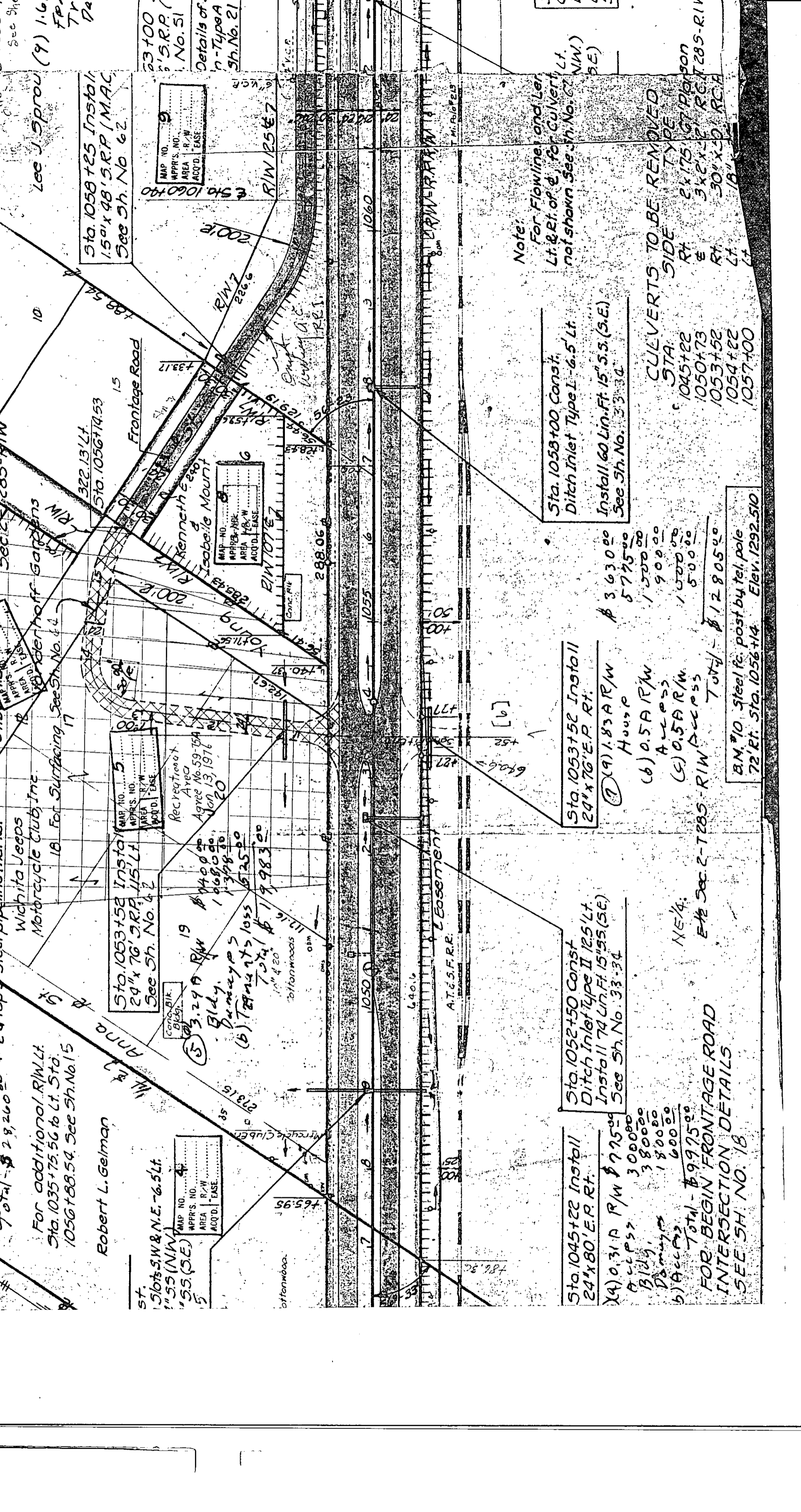
Sta. 1053+52 Install 24" x 76" S.R.P. 15' Lt. See Sh. No. 42

Sta. 1052+50 Const. Ditch Inlet Type II 12.5' Lt. Install 74 Lin. Ft. 15" S.S. (S.E.) See Sh. No. 33-34

Sta. 1045+22 Install 24" x 80" E.R. Rt. (A) 0.31 A R/W \$775.00 (B) 0.5 A R/W \$3000.00 (C) 0.5 A R/W \$3800.00 (D) Access \$1800.00 (E) Access \$600.00 Total - \$9975.00 FOR BEGIN FRONTAGE ROAD INTERSECTION DETAILS SEE SH. NO. 18

Sta. 1053+52 Install 24" x 76" E.P. Rt. (A) 1.83 A R/W House \$3630.00 (B) 0.5 A R/W Access \$5775.00 (C) 0.5 A R/W Access \$1500.00 (D) 0.5 A R/W Access \$900.00 (E) Access \$500.00 Total - \$12805.00

Sta. 1053+52 Install 24" x 76" E.P. Rt. (A) 1.83 A R/W House \$3630.00 (B) 0.5 A R/W Access \$5775.00 (C) 0.5 A R/W Access \$1500.00 (D) 0.5 A R/W Access \$900.00 (E) Access \$500.00 Total - \$12805.00



Wichita Jeeps Motorcycle Club, Inc. 18. For Surfacing See Sh. No. 44

Robert L. Gelman

Sta. 1053+52 Install 24" x 76" S.R.P. 15' Lt. See Sh. No. 42

Sta. 1052+50 Const. Ditch Inlet Type II 12.5' Lt. Install 74 Lin. Ft. 15" S.S. (S.E.) See Sh. No. 33-34

Sta. 1045+22 Install 24" x 80" E.R. Rt. (A) 0.31 A R/W \$775.00 (B) 0.5 A R/W \$3000.00 (C) 0.5 A R/W \$3800.00 (D) Access \$1800.00 (E) Access \$600.00 Total - \$9975.00 FOR BEGIN FRONTAGE ROAD INTERSECTION DETAILS SEE SH. NO. 18

Sta. 1053+52 Install 24" x 76" E.P. Rt. (A) 1.83 A R/W House \$3630.00 (B) 0.5 A R/W Access \$5775.00 (C) 0.5 A R/W Access \$1500.00 (D) 0.5 A R/W Access \$900.00 (E) Access \$500.00 Total - \$12805.00

Map No. 19
APPR'S. NO. 19
AREA R/W ACC'D. EASE

Map No. 5
APPR'S. NO. 5
AREA R/W ACC'D. EASE

Map No. 19
APPR'S. NO. 19
AREA R/W ACC'D. EASE

Map No. 4
APPR'S. NO. 4
AREA R/W ACC'D. EASE

Map No. 4
APPR'S. NO. 4
AREA R/W ACC'D. EASE

Map No. 4
APPR'S. NO. 4
AREA R/W ACC'D. EASE

Map No. 19
APPR'S. NO. 19
AREA R/W ACC'D. EASE

Map No. 5
APPR'S. NO. 5
AREA R/W ACC'D. EASE

Map No. 19
APPR'S. NO. 19
AREA R/W ACC'D. EASE

Map No. 4
APPR'S. NO. 4
AREA R/W ACC'D. EASE

Map No. 4
APPR'S. NO. 4
AREA R/W ACC'D. EASE

Map No. 4
APPR'S. NO. 4
AREA R/W ACC'D. EASE

Map No. 19
APPR'S. NO. 19
AREA R/W ACC'D. EASE

Map No. 5
APPR'S. NO. 5
AREA R/W ACC'D. EASE

Map No. 19
APPR'S. NO. 19
AREA R/W ACC'D. EASE

Map No. 4
APPR'S. NO. 4
AREA R/W ACC'D. EASE

Map No. 4
APPR'S. NO. 4
AREA R/W ACC'D. EASE

Map No. 4
APPR'S. NO. 4
AREA R/W ACC'D. EASE

Map No. 19
APPR'S. NO. 19
AREA R/W ACC'D. EASE

Map No. 5
APPR'S. NO. 5
AREA R/W ACC'D. EASE

Map No. 19
APPR'S. NO. 19
AREA R/W ACC'D. EASE

Map No. 4
APPR'S. NO. 4
AREA R/W ACC'D. EASE

Map No. 4
APPR'S. NO. 4
AREA R/W ACC'D. EASE

Map No. 4
APPR'S. NO. 4
AREA R/W ACC'D. EASE

Map No. 19
APPR'S. NO. 19
AREA R/W ACC'D. EASE

Map No. 5
APPR'S. NO. 5
AREA R/W ACC'D. EASE

Map No. 19
APPR'S. NO. 19
AREA R/W ACC'D. EASE

Map No. 4
APPR'S. NO. 4
AREA R/W ACC'D. EASE

Map No. 4
APPR'S. NO. 4
AREA R/W ACC'D. EASE

Map No. 4
APPR'S. NO. 4
AREA R/W ACC'D. EASE

Map No. 19
APPR'S. NO. 19
AREA R/W ACC'D. EASE

Map No. 5
APPR'S. NO. 5
AREA R/W ACC'D. EASE

Map No. 19
APPR'S. NO. 19
AREA R/W ACC'D. EASE

Map No. 4
APPR'S. NO. 4
AREA R/W ACC'D. EASE

Map No. 4
APPR'S. NO. 4
AREA R/W ACC'D. EASE

Map No. 4
APPR'S. NO. 4
AREA R/W ACC'D. EASE

Map No. 19
APPR'S. NO. 19
AREA R/W ACC'D. EASE

Map No. 5
APPR'S. NO. 5
AREA R/W ACC'D. EASE

Map No. 19
APPR'S. NO. 19
AREA R/W ACC'D. EASE

Map No. 4
APPR'S. NO. 4
AREA R/W ACC'D. EASE

Map No. 4
APPR'S. NO. 4
AREA R/W ACC'D. EASE

Map No. 4
APPR'S. NO. 4
AREA R/W ACC'D. EASE

Map No. 19
APPR'S. NO. 19
AREA R/W ACC'D. EASE

Map No. 5
APPR'S. NO. 5
AREA R/W ACC'D. EASE

Map No. 19
APPR'S. NO. 19
AREA R/W ACC'D. EASE

Map No. 4
APPR'S. NO. 4
AREA R/W ACC'D. EASE

Map No. 4
APPR'S. NO. 4
AREA R/W ACC'D. EASE

Map No. 4
APPR'S. NO. 4
AREA R/W ACC'D. EASE

Note: For Flowline and Let Lt. & Rt. of d. for Culvert Lt. not shown See Sh. No. 62 (NW) (SE)

Sta. 1058+00 Const. Ditch Inlet Type L - 6.5' Lt. Install 60 Lin. Ft. 15" S.S. (S.E.) See Sh. No. 33-34

CULVERTS TO BE REMOVED SIDE STA: 1045+22 1050+73 1053+52 1054+22 1057+00

RT. E 2' x 17.5' 27' Dia. 3' x 2' x 2' 30' x 20' 18' x 18'

RT. Lt. Lt.

8.M. #10 Steel fe. post by tel. pole 72' Rt. Sta. 1056+14 Elev. 1292.510