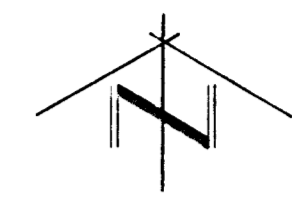
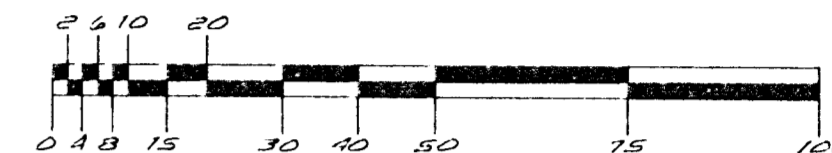


DRAINAGE PLAN OF PROPOSED "LANDWEHR'S ADDITION" TO WICHITA, SEDGWICK COUNTY, KANSAS



SCALE: 1" = 25'



LEGEND:

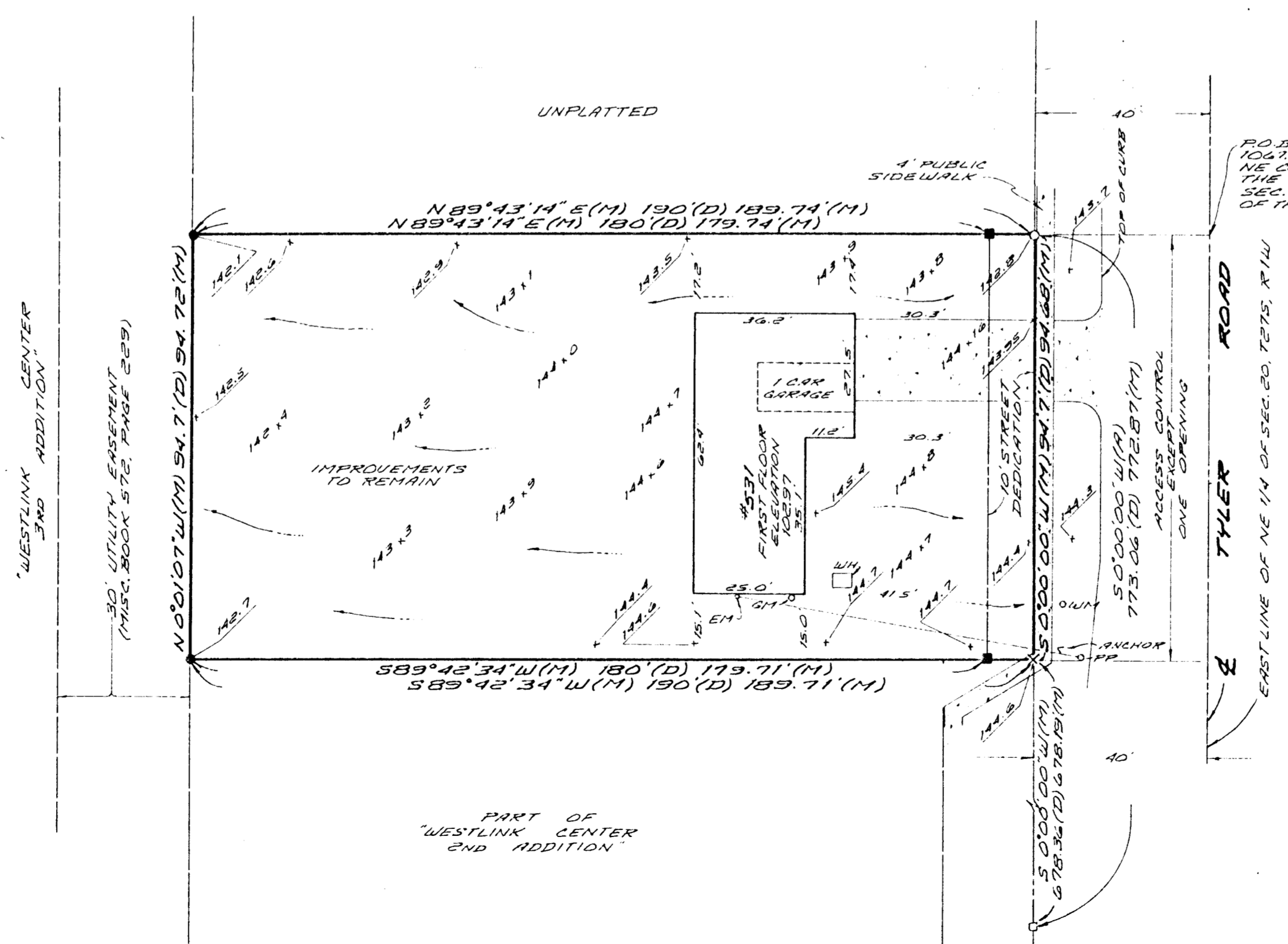
- | | | | |
|-----|---------------------------|----|----------------------------|
| ○ | = #5 REBAR-FOUND | WM | = WATER METER |
| ● | = 1/2" PINCHED PIPE-FOUND | GM | = GAS METER |
| ◻ | = 1/2" IRON PIPE | EM | = ELECTRIC METER |
| ■ | = #4 REBAR WITH ID CAP | WH | = UNDERGROUND WELL HOUSING |
| | "T.L.S.T. CLS22" - SET | FP | = POWER POLE / LIGHT POLE |
| X | = CHISELED "A" - SET | | |
| (D) | = DESCRIBED | | FILE # 950513 |
| (M) | = MEASURED | | DATE OF TOPOGRAPHY: |
| (A) | = ASSUMED BEARING BASIS | | 12 JULY 1995 |

NOTES:

OWNER: ALICE BARKSMAN
2101 TERRACE DRIVE
NEWTON, KS 67114-1246

UTILITIES: KANSAS ONE-CALL WAS CALLED TO ARRANGE FOR FLAGGING OF UTILITIES (TICKETS # 139913 AND 145610). KO.EE, KPL GAS, MULTI-MEDIA CABLEVISION, PEOPLES' NATURAL GAS, S.W. BELL AND WICHITA WATER WERE CONTACTED. NO UTILITIES WERE FLAGGED AT TIME OF FIELDWORK. BY OBSERVATION, UNDERGROUND TELEPHONE AND OVERHEAD ELECTRIC ARE DETERMINED TO BE IN THE STREET RIGHT-OF-WAY. SANITARY SEWER IS PRESENT (18" UCP) IN THE 30' UTILITY EASEMENT ADJOINING SUBJECT PROPERTY ON THE WEST, PER SANITARY SEWER BOOK K-166. STORM WATER SEWER (24" LINE) IS ALONG THE WEST SIDE OF TYLER ROAD. SEWER INFORMATION OBTAINED FROM CENTRAL INSPECTIONS RECORDS. WICHITA WATER (16" LINE) IS PRESENT ALONG THE EAST SIDE OF TYLER ROAD, PER WICHITA WATER DEPARTMENT RECORDS.

BENCH MARK:
CHISELED "D" IN CENTER CONCRETE HEADWALL TO RCP (ACROSS TYLER) ON EAST SIDE OF TYLER ROAD AND APPROXIMATELY 200' NORTH OF 2ND STREET
ELEVATION 131.25



TERRA TECH
LAND SURVEYING INC.

239 North Ohio
Wichita, Kansas 67214-3933
(316) 287-0744 / (287) 2328
Fax (316) 287-2738