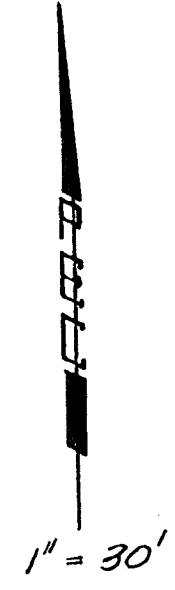
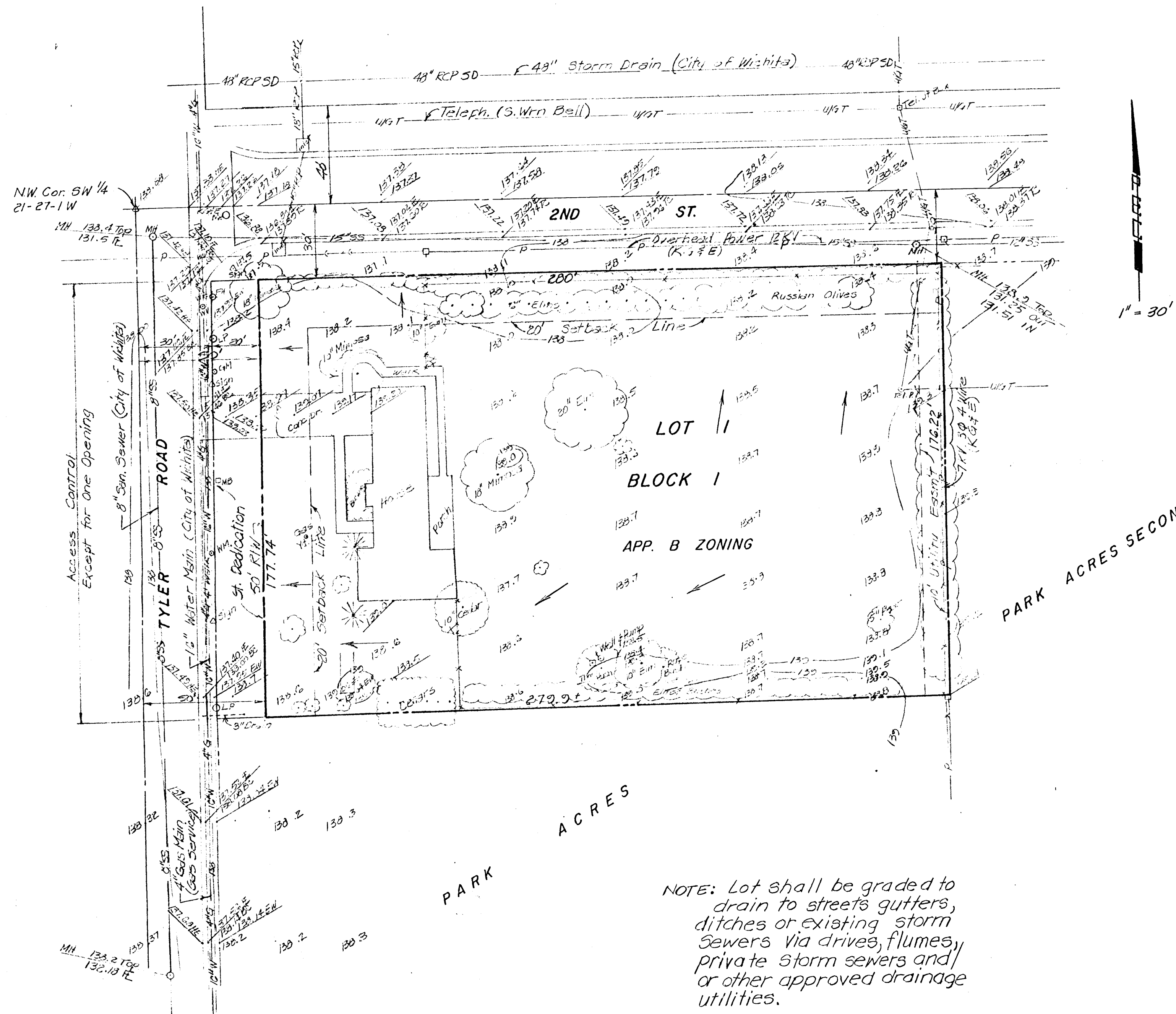


DRAINAGE PLAN LANSLOWNE ADDITION

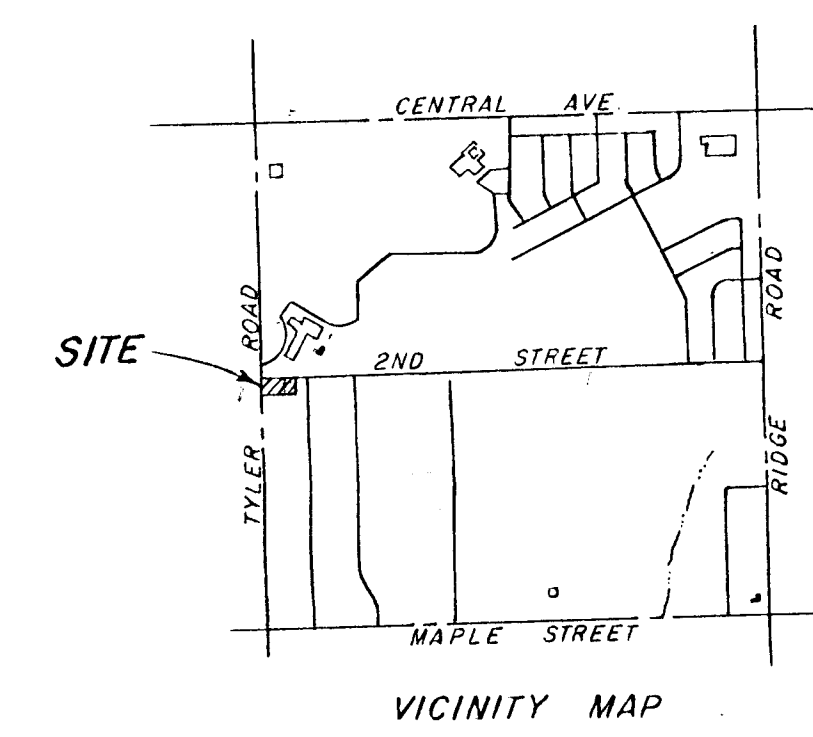
OWNER: R. P. Lansdowne and Sharon L. Lansdowne
2526 E. Central
Wichita, Ks.

ENGINEER: P.E.C. p.a.
1440 English
Wichita, Ks.



PARK ACRES SECOND

NOTE: Lot shall be graded to drain to streets gutters, ditches or existing storm sewers via drives, flumes, private storm sewers and/or other approved drainage utilities.



BM. Tyler # 2nd City Standard "d" cut in ctr. of conc. Headwall on RCP. East side Tyler approx. 200 ft. N. of 2nd St. Elev. 137.25 City Datum. Dec. 1984