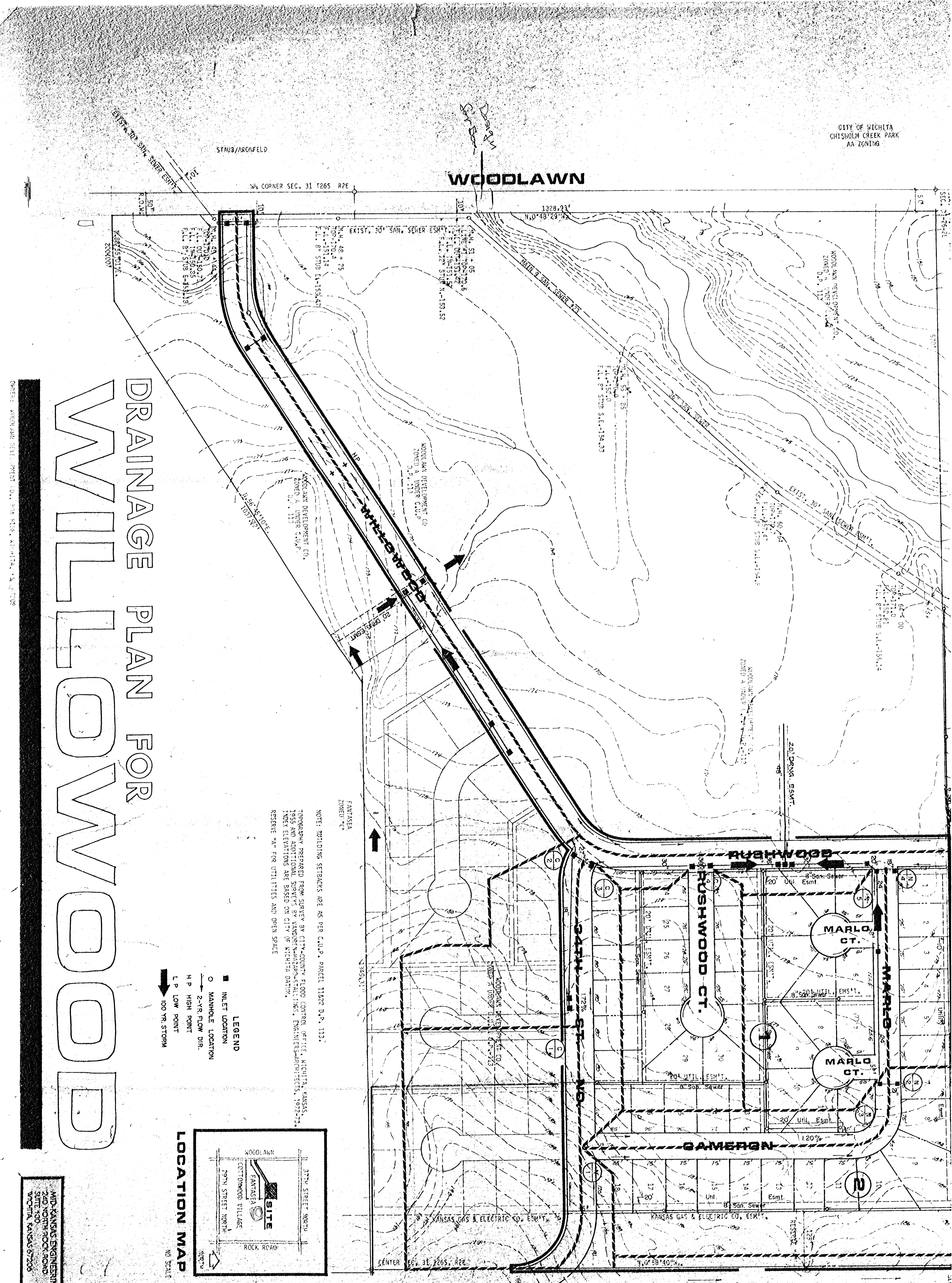
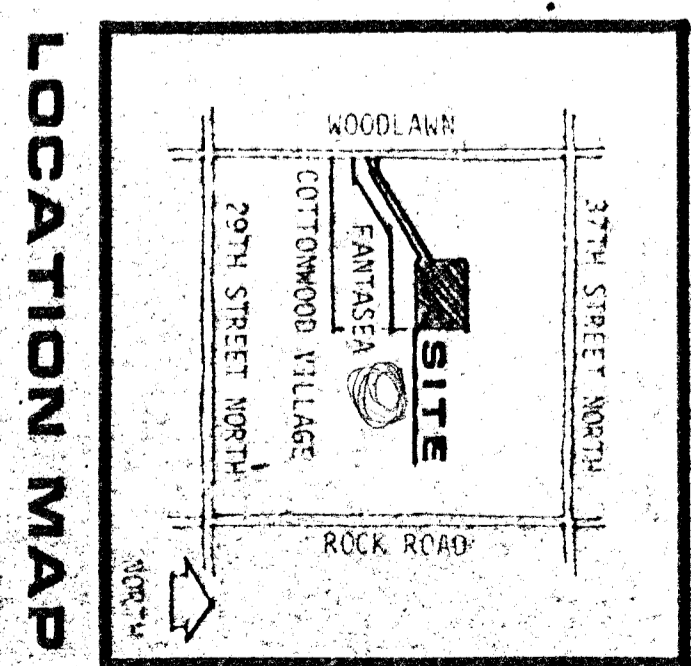


CITY OF WICHITA  
CHISHOLM CREEK PARK  
AA ZONING



# DRAINAGE PLAN FOR WILLILOWOOD

- LEGEND**
- INLET LOCATION
  - MANHOLE LOCATION
  - 2'-R.F. FLOW DIR.
  - H P HIGH POINT
  - L P LOW POINT
  - 100 YR. STORM



NOTE: BUILDING SETBACKS ARE AS PER C.U.P. PARCEL 11027 D.P. 113.  
TOPOGRAPHY PREPARED FROM SURVEY BY CITY-ENGINEER FLOOD CONTROL OFFICE, WICHITA, KANSAS, 1955 AND ADDITIONAL SURVEYS BY VANDERKAM/ANDERSON/STAL/INSE, ENGINEERS-ARCHITECTS, 1972-73. THESE ELEVATIONS ARE BASED ON CITY OF WICHITA DATUM.  
RESERVE 4" FOR UTILITIES AND OPEN SPACE.

AND KANSAS ENGINEERING CONSULTANTS BY  
SITE 200  
707 N. WASHINGTON  
WICHITA, KANSAS 67208  
382-5594



WOODLAWN DEVELOPMENT CO.  
JOHN A. VANDERKAM, C.E., P.E.  
In case of Willilowood will be redirected by  
the north to a channel and easement will be  
granted by separate instrument.