

MURDOCK AVE.

AVE.

AVE.

LOT

PINE ST.

PINE ST.

PRELIMINARY PLAT
WESLEY MEDICAL CENTER SECOND ADDN.
WESLEY MEDICAL CENTER

Note:
Vacation of Pine and Elm Streets
and Rutan Ave. are contingent, to
become effective Jan. 1, 1975.
The 10 foot dedication for Vassar Ave.
is contingent, to become effective
Jan. 1, 1975.

WESLEY MEDICAL CENTER ADDITION

PRIVATE DRIVE

RUTAN

FUTURE PRIVATE DRIVE

ELM ST.

VASSAR

HILLSIDE AVE.

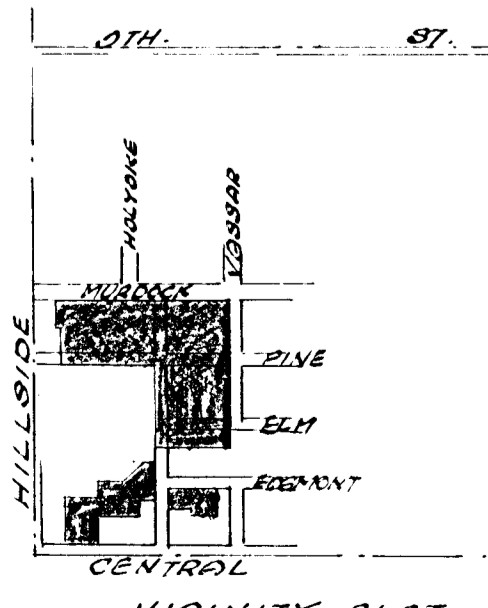
EDGEMONT PLACE

LOT 3

LOT 2

BLAZERS

ADDN.



20 N. & 155 E. of S.N. Co.
S.N. 14-27-1E.

CENTRAL

AVE.