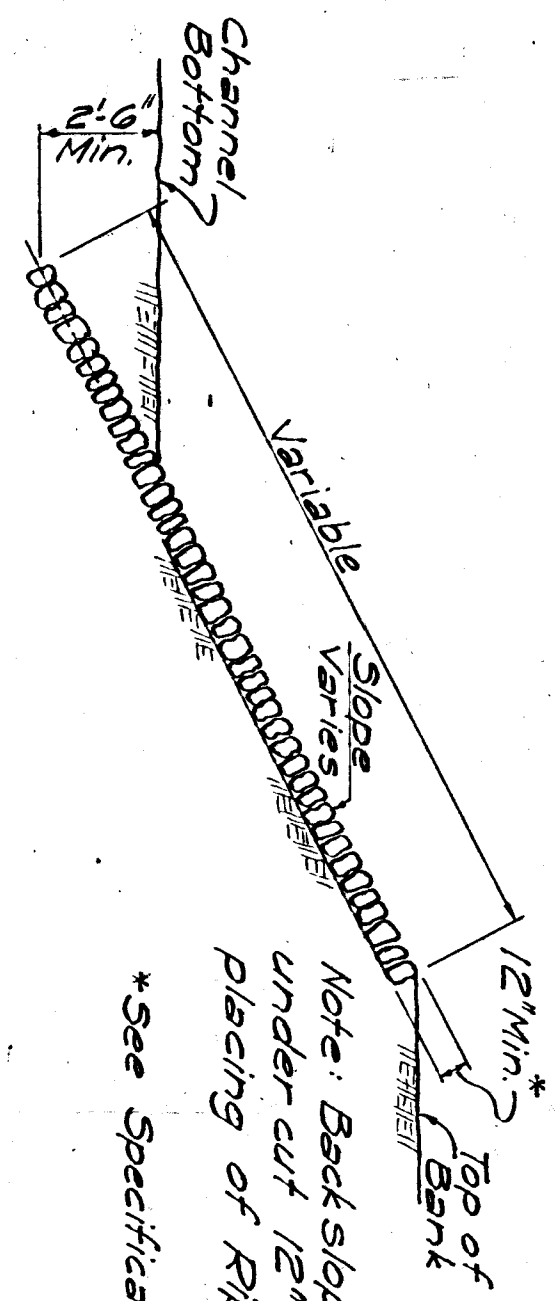
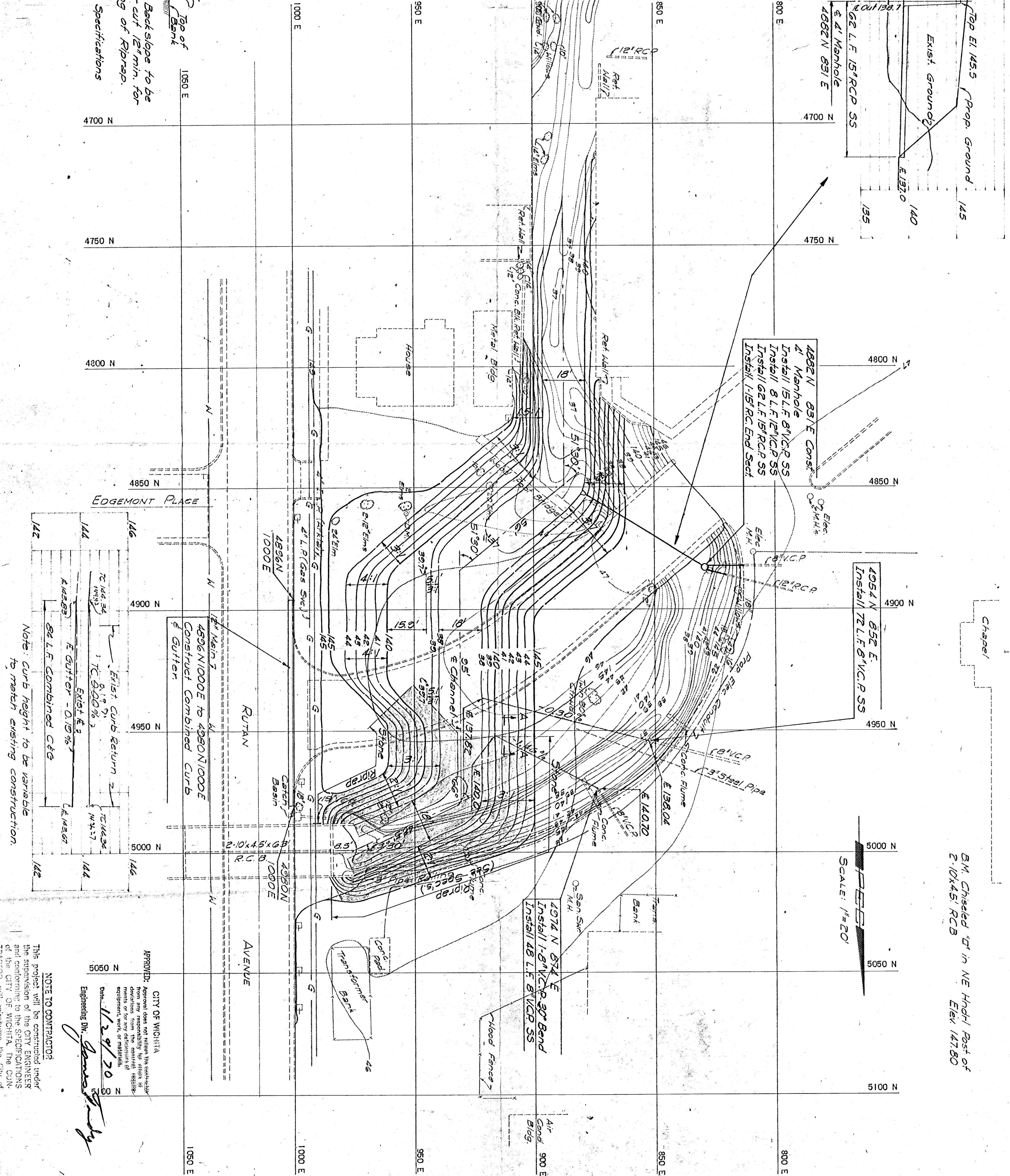


Note: Quantities shown on the plans are approximate and should be used for estimating purposes only. It shall be the contractor's responsibility to make adjustments in the field as necessary to secure the desired end results shown on the plans.



SECTION THRU RIPRAP

SECTION A-A



Note: Curb height to be variable to match existing construction.

NOTE TO CONTRACTOR:  
This project will be constructed under the supervision of the CITY ENGINEERS and conforming to the SPECIFICATIONS of the CITY OF WICHITA. The CONTRACTOR will reimburse the CITY of WICHITA for all cost of in specification.

APPROVED:  
CITY OF WICHITA  
From any responsibility for which it may be held, the City of Wichita, Kansas, disclaims any liability for any damages, loss, or injury, or for any delay, or for any other consequences, arising out of or from the use of the plans, specifications, or contract documents, or from the work, or from the negligence of any person, firm, or corporation, or from any cause whatsoever, except the negligence of the City of Wichita, Kansas.

Date: 1/29/20  
Engineering Div. *James G. Smith*

5M Checked 1st in NE High Part of 2:10/45 KCB  
Elev 147.80

SCALE: 1"=20'