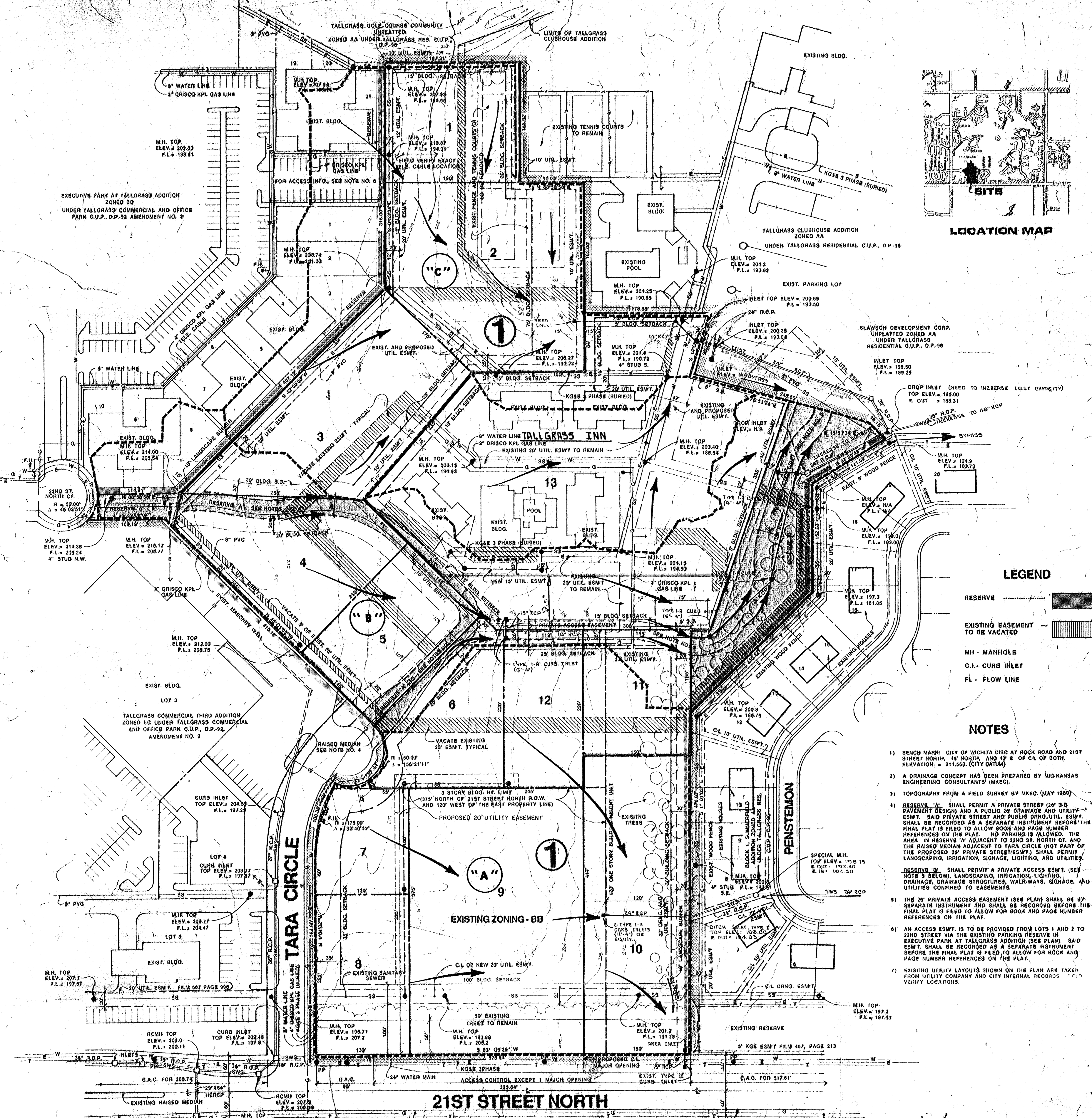


LOCATION MAP

EXECUTIVE PARK AT TALLGRASS ADDITION
ZONED BB
UNDER TALLGRASS COMMERCIAL AND OFFICE
PARK C.U.P., D.P.-92 AMENDMENT NO. 2



LEGEND

- RESERVE [Symbol]
- EXISTING EASEMENT TO BE VACATED [Symbol]
- M.H. - MANHOLE
- C.I. - CURB INLET
- FL. - FLOW LINE

NOTES

- 1) BENCH MARK: CITY OF WICHITA DISC AT ROCK ROAD AND 21ST STREET NORTH, 15' NORTH, AND 49' S OF CL OF BOTH. ELEVATION = 214.569. (CITY DATUM)
- 2) A DRAINAGE CONCEPT HAS BEEN PREPARED BY MID-KANSAS ENGINEERING CONSULTANTS (MKEC).
- 3) TOPOGRAPHY FROM A FIELD SURVEY BY MKEC. (MAY 1989)
- 4) RESERVE 'A' SHALL PERMIT A PRIVATE STREET (20' B-B PAVEMENT DESIGN) AND A PUBLIC 20' DRAINAGE AND UTILITY ESM'T. SAID PRIVATE STREET AND PUBLIC DRNG.UTIL. ESM'T. SHALL BE RECORDED AS A SEPARATE INSTRUMENT BEFORE THE FINAL PLAT IS FILED TO ALLOW BOOK AND PAGE NUMBER REFERENCES ON THE PLAT. NO PARKING IS ALLOWED. THE AREA IN RESERVE 'A' ADJACENT TO 22ND ST. NORTH CT. AND THE RAISED MEDIAN ADJACENT TO TARA CIRCLE (NOT PART OF THE PROPOSED 20' PRIVATE STREET/ESM'T.) SHALL PERMIT LANDSCAPING, IRRIGATION, SIGNAGE, LIGHTING, AND UTILITIES.
- 5) RESERVE 'B' SHALL PERMIT A PRIVATE ACCESS ESM'T. (SEE NOTE 5 BELOW), LANDSCAPING, IRRIGATION, LIGHTING, DRAINAGE, DRAINAGE STRUCTURES, WALK-WAYS, SIGNAGE, AND UTILITIES CONFINED TO EASEMENTS.
- 6) THE 20' PRIVATE ACCESS ESM'T. (SEE PLAN) SHALL BE BY SEPARATE INSTRUMENT AND SHALL BE RECORDED BEFORE THE FINAL PLAT IS FILED TO ALLOW FOR BOOK AND PAGE NUMBER REFERENCES ON THE PLAT.
- 7) AN ACCESS ESM'T. IS TO BE PROVIDED FROM LOTS 1 AND 2 TO 22ND STREET VIA THE EXISTING PARKING RESERVE IN EXECUTIVE PARK AT TALLGRASS ADDITION (SEE PLAN). SAID ESM'T. SHALL BE RECORDED AS A SEPARATE INSTRUMENT BEFORE THE FINAL PLAT IS FILED TO ALLOW FOR BOOK AND PAGE NUMBER REFERENCES ON THE PLAT.
- 8) EXISTING UTILITY LAYOUTS SHOWN ON THE PLAN ARE TAKEN FROM UTILITY COMPANY AND CITY INTERNAL RECORDS. FIELD VERIFY LOCATIONS.

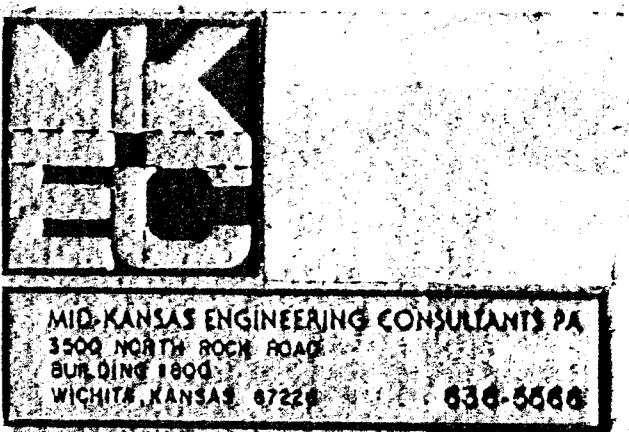
TOTAL ACRES = 15.55
(677,531.59 SQ. FT.)

DRAINAGE AREA	AREA ACRES	AREA ACCUM.	C _s	C ₁₀₀	T _e (HR)	T ₁₀ (HR)	T ₁₀₀ (HR)	Q ₁₀₀ (CFS)	Q ₁₀ (CFS)	PIPE SIZE	PIPE SLOPE	INLETS	REMARKS
AREA A Lots 1 & 2 Block 1 208 Impervious	0.08	0.76	0.84	15	4.58	7.32	21.0	37.5	1.06	24" RCP	1.0%	1 (11)-10"	Extend Along East Side of Summerfield
AREA B Lots 3 & 4 Block 1 208 Impervious	0.33	0.76	0.84	15	4.20	7.32	17.0	33.0	1.06	24" RCP	1.0%	1 (11)-10"	Extend Along North Side of Summerfield
AREA C Lots 5 & 6 Block 1 208 Impervious	1.12	0.76	0.84	15	4.58	7.32	17.0	30.5	1.06	24" RCP	0.5%	Area Inlet	
TOTAL	1.53	0.76	0.84	15	4.58	7.32	55.0	101.0	1.06	24" RCP	0.75%	3 (11)-10"	Extend Along East Side of Summerfield

DRAINAGE & UTILITY PLAN
AUGUST 28, 1989

UNDER TALLGRASS COMMERCIAL AND OFFICE PARK C.U.P., D.P.-92 AMENDMENT NO. 2

TALLGRASS COMMERCIAL 5TH ADDITION



MID-KANSAS ENGINEERING CONSULTANTS PA
1500 NORTH ROCK ROAD
WICHITA, KANSAS 67202
616-266-0000