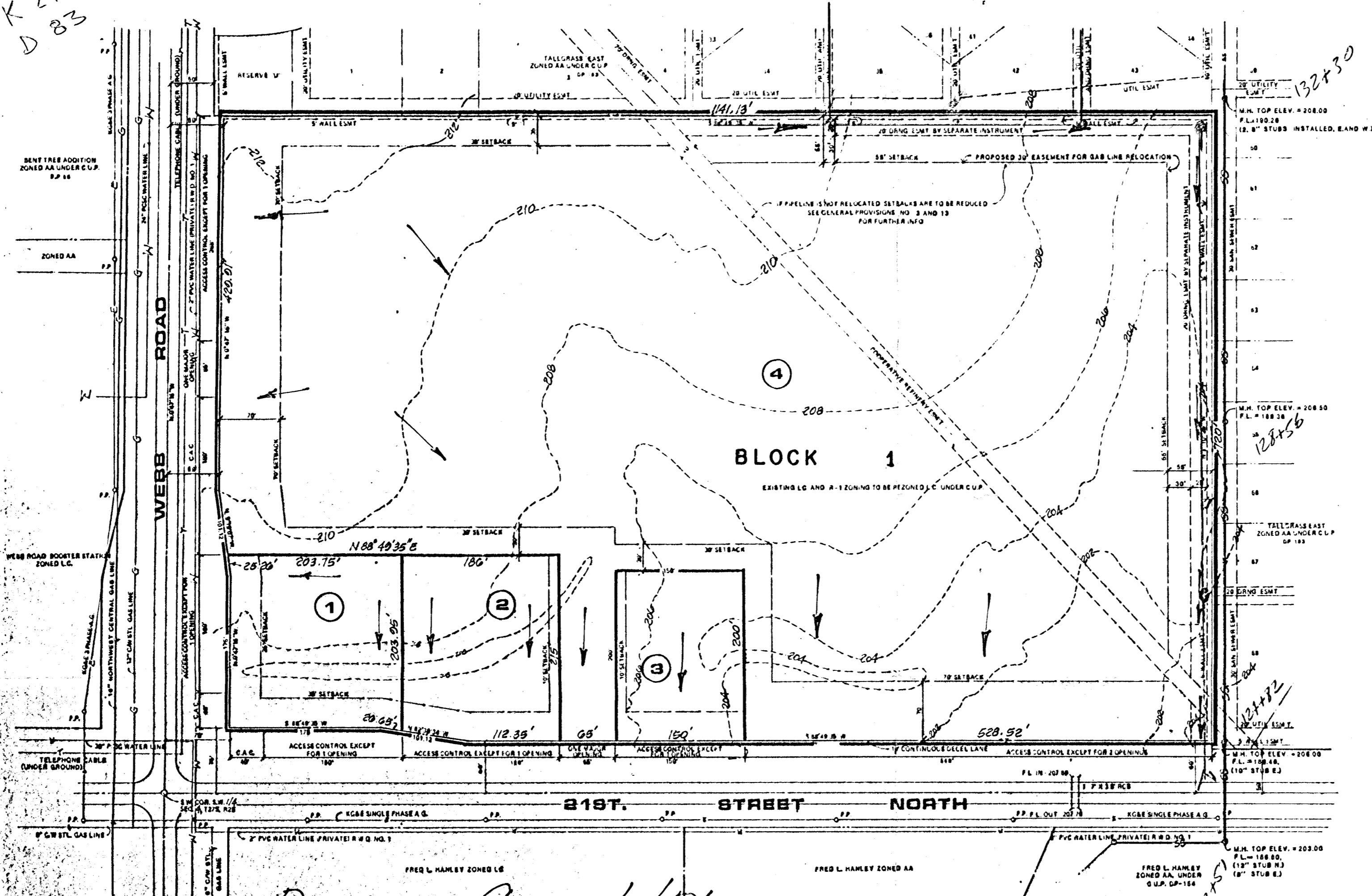


K 214  
D 83

K 214  
M 24 WJ  
7/22/87  
D 83  
SWS 331  
1/25/88



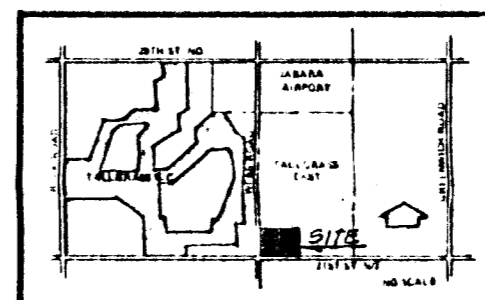
SCALE 1" = 100'  
3-24-88

**NOTES**

TOPOGRAPHY PREPARED FROM AERIAL PHOTOGRAPH OBTAINED 17 APRIL 1984

GENERAL PROVISIONS PROPOSE A DEVELOPMENT WITH APPROX 18.1 GROSS ACRES  
THE LEGAL DESCRIPTION DESCRIBES THE PROPERTY AS SHOWN IN 8 GROSS ACRES  
EXPLANATION: GENERAL PROVISIONS DESCRIBE THE PROPERTY AFTER FUTURE  
STREET IMPROVEMENTS. THE LEGAL DESCRIPTION DESCRIBES THE  
PROPERTY WITHOUT STREET IMPROVEMENTS.

B.M. Webb Rd & 21st St. No.  
City of Wichita B.M. Disc. 44 ft. south  
& 48 ft. east of inter. centerline of both  
Elev. = 205.238 City Datum  
= 1392.638 m.s.l.



LOCATION MAP

*Drainage Concept / Plan*

**PRELIMINARY PLAT OF  
TALLGRASS EAST COMMERCIAL  
TO WICHITA, SEDGWICK COUNTY, KANSAS.**

OWNER-DEVE. - SLAWSON INVESTMENT CORP.  
C/O DON COZART  
200 Douglas Bldg. 67202

ENGINEER - Professional Engineering Consultants P.A.  
1440 English 67211

Note: Lots 1 through 4 shall be  
graded to drain to Webb Rd. &  
21st St. N. via flumes, drives, private  
storm sewers, public storm sewer and/or  
other approved drainage facilities.