

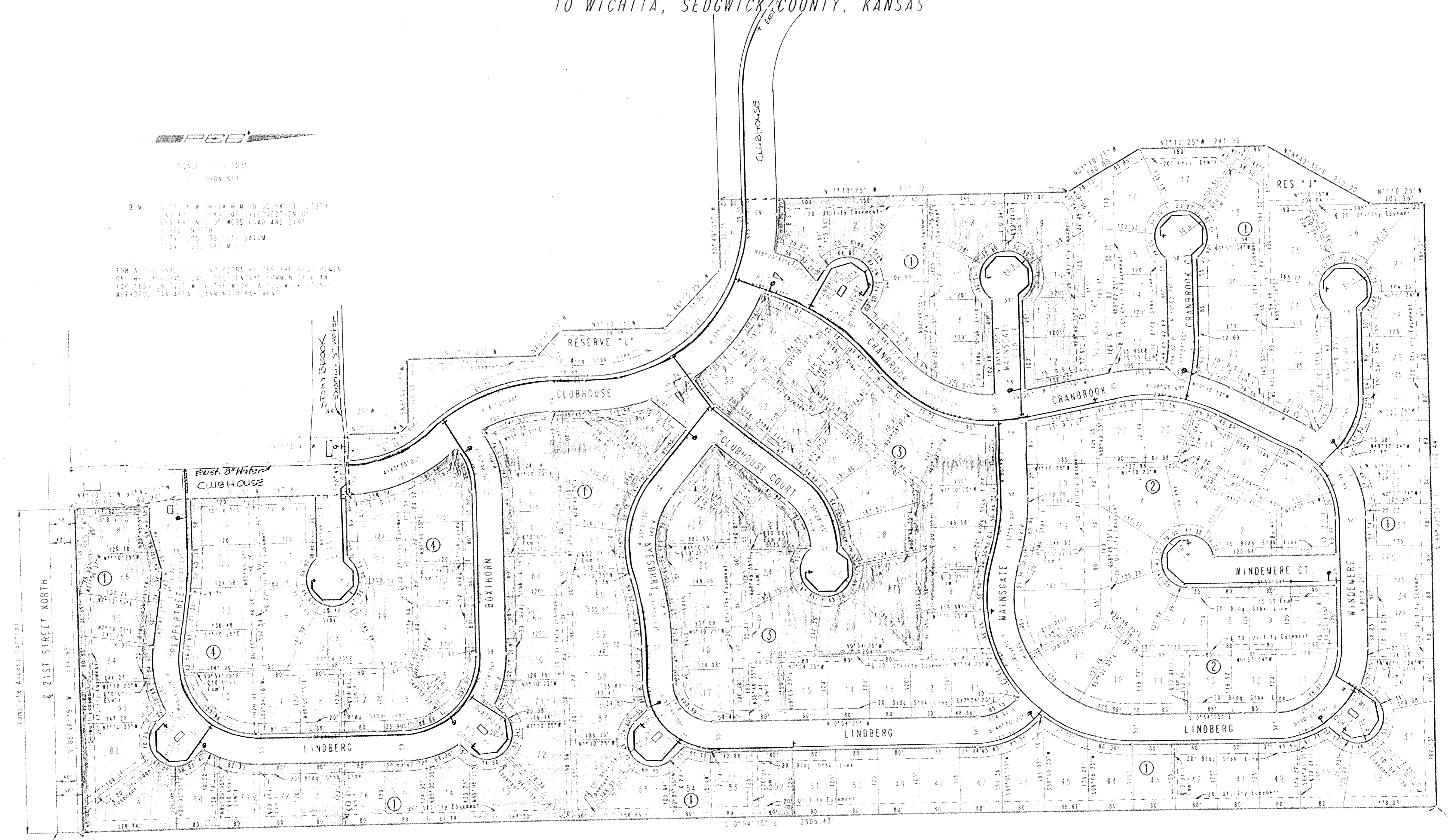
TALLGRASS EAST 3RD ADDITION

TO WICHITA, SEDGWICK COUNTY, KANSAS

SCALE: 1" = 100'
 IRON SET

B.M. 1011 CHITA B.M. 5130 44 FT. SOUTH
 AND 47 FT. EAST OF INTERSECTION OF
 CENTERLINE OF WERG ROAD AND 21ST
 STREET NORTH
 1174.1233 236 CITY DATUM
 1174.1232 236 M.S.L.

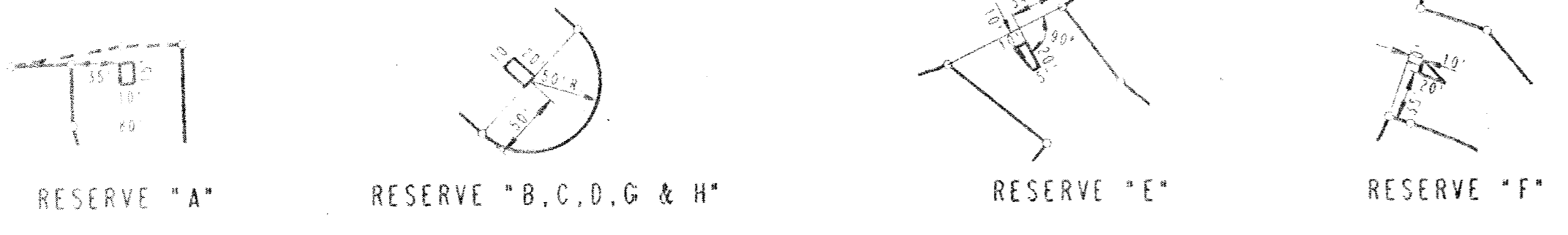
FOR ADDITIONAL REQUIREMENTS SEE THE REQUIREMENTS
 OF THE TALLGRASS EAST RESIDENTIAL COMMUNITY PLAN
 CDP 1631 ON FILE AT THE WICHITA COUNTY PLANNING DEPARTMENT
 METROPOLITAN AREA PLANNING DEPARTMENT



S.E. COR. S.W. 1/4
 SEC. 4, T57N, R2E
 OF THE 6TH P.M.

N.E. COR. S.W. 1/4
 SEC. 4, T27S, R2E
 OF THE 6TH P.M.
 POINT OF BEGINNING

WBB 8-11-89
 (13)



WATER MAINS
 PHASE 1 [Symbol]
 PHASE 2 [Symbol]