

TALLGRASS EAST 3RD ADDITION TO WICHITA, SEDGWICK COUNTY, KANSAS

(not incl.
in Ben. dist.)



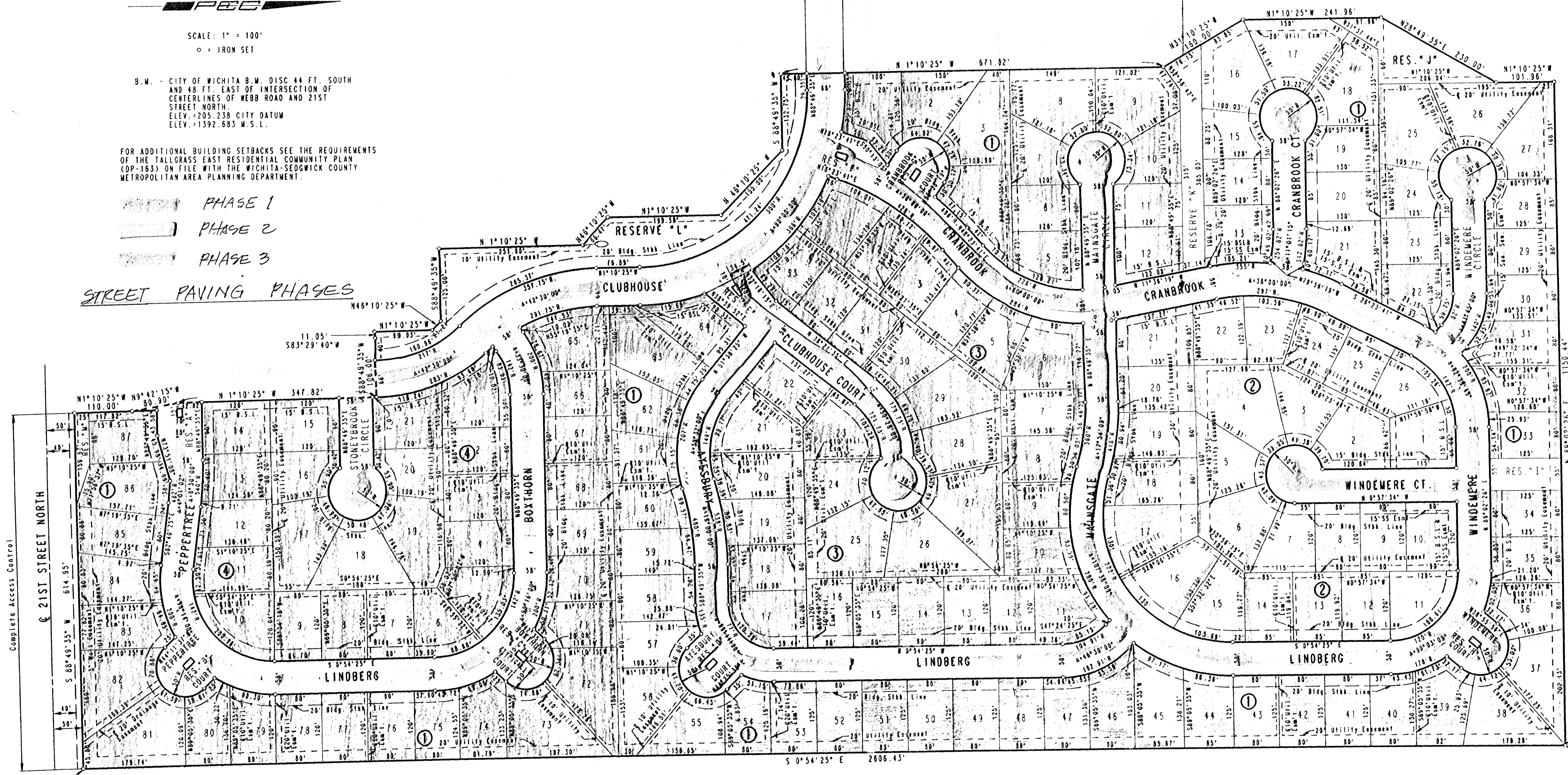
SCALE: 1" = 100'
○ = IRON SET

B.M. - CITY OF WICHITA B.M. DISC 44 FT. SOUTH
AND 48 FT. EAST OF INTERSECTION OF
CENTERLINES OF WEBB ROAD AND 21ST
STREET NORTH.
ELEV. +205.238 CITY DATUM
ELEV. +1392.683 M.S.L.

FOR ADDITIONAL BUILDING SETBACKS SEE THE REQUIREMENTS
OF THE TALLGRASS EAST RESIDENTIAL COMMUNITY PLAN
(CDP-183) ON FILE WITH THE WICHITA-SEDGWICK COUNTY
METROPOLITAN AREA PLANNING DEPARTMENT.

- PHASE 1
- PHASE 2
- PHASE 3

STREET PAVING PHASES



Complete Access Control

21ST STREET NORTH

S.E. COR. S.W. 1/4
SEC. 4, T27S, R2E
OF THE 6TH P.M.

N.E. COR. S.W. 1/4
SEC. 4, T27S, R2E
OF THE 6TH P.M.
POINT OF BEGINNING