

TALLGRASS EAST 3RD ADDITION

TO WICHITA, SEDGWICK COUNTY, KANSAS

SANITARY
SEWER
LAYOUT

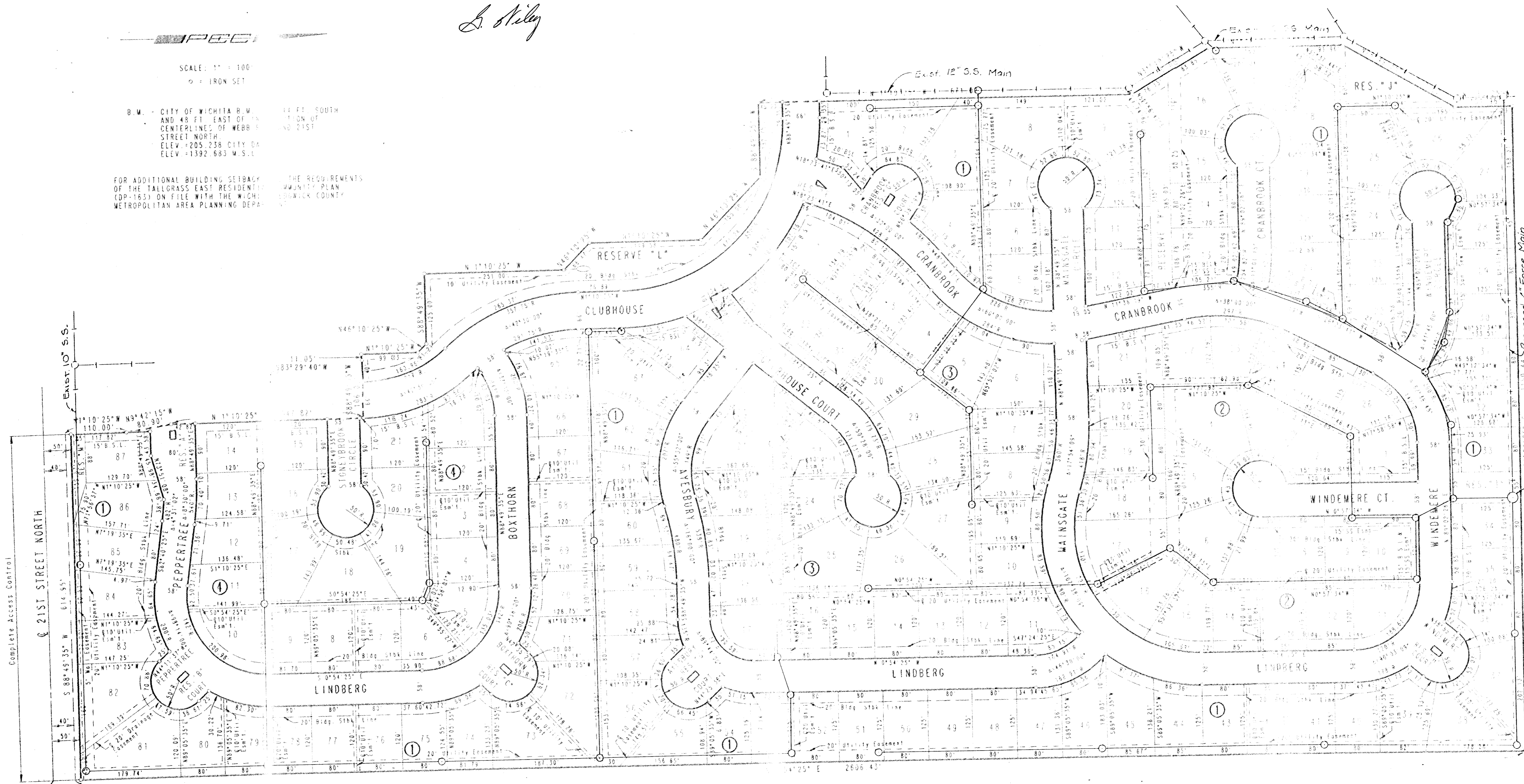
L. Hilley



SCALE: 1" = 100'
○ = IRON SET

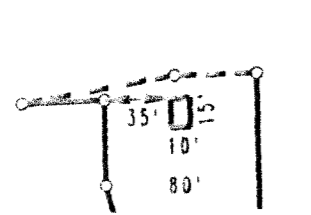
B.M. - CITY OF WICHITA B.M. 44 FT. SOUTH AND 48 FT. EAST OF CENTERLINE OF WEBB STREET NORTH ELEV. +205.258 CITY OF WICHITA ELEV. +1392.683 W.S.L.

FOR ADDITIONAL BUILDING SETBACKS AND THE REQUIREMENTS OF THE TALLGRASS EAST RESIDENTIAL COMMUNITY PLAN (CP-183) ON FILE WITH THE WICHITA METROPOLITAN AREA PLANNING DEPARTMENT AND SEDGWICK COUNTY.

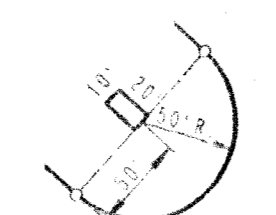


S.E. COR. S.W. 1/4
SEC. 4, 1572, R2E
OF THE 6TH P.M.

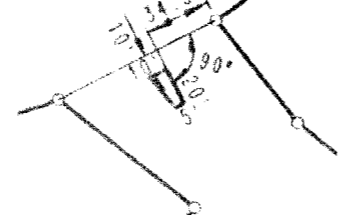
N.E. COR. S.W. 1/4
SEC. 4, 1572, R2E
OF THE 6TH P.M.
POINT OF BEGINNING



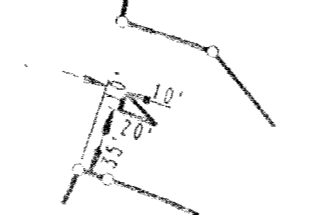
RESERVE "A"



RESERVE "B, C, D, G & H"



RESERVE "E"



RESERVE "F"