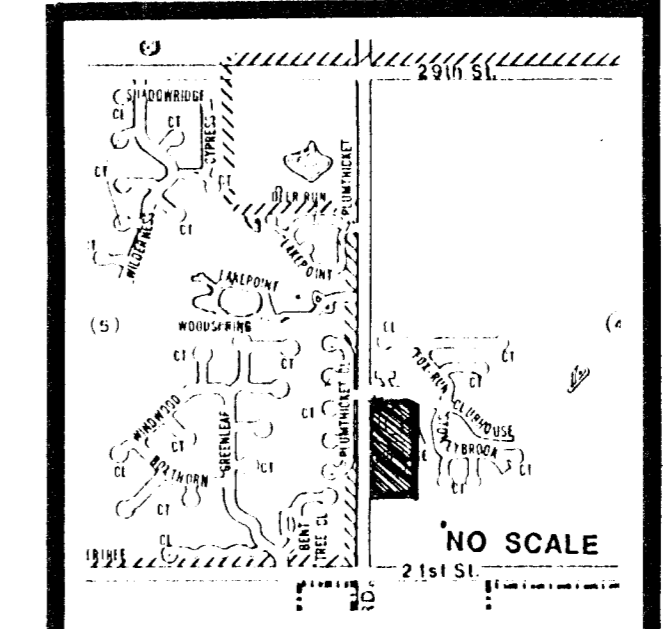


NOTES:

PLAT IS SUBJECT TO GENERAL PROVISIONS OF TALLGRASS II CUP DP-163
 DRAINAGE CONCEPT PLAN TO BE PREPARED BY P.E.C. AND SUBMITTED TO CITY ENGINEER.
 RESERVES "A THRU H" SHALL PERMIT LANDSCAPING, ENTRY MONUMENTS, WALKS AND UTILITIES CONFINED TO ESMTS.

BENCHMARK: CITY OF WICHITA DISC. 44' S. & 48' E. OF INTERSECTION OF WEBB ROAD & 21ST STREET NORTH. ELEV. - 205.238 CITY DATUM.



LOCATION MAP

A REPLAT OF A PORTION OF TALLGRASS EAST ADDITION.
TALLGRASS EAST 5TH ADDITION

OWNER: RITCHIE ASSOCIATES, 8100 E. 22ND ST. NO. BLD. 1000, WICHITA, KANSAS 67226

