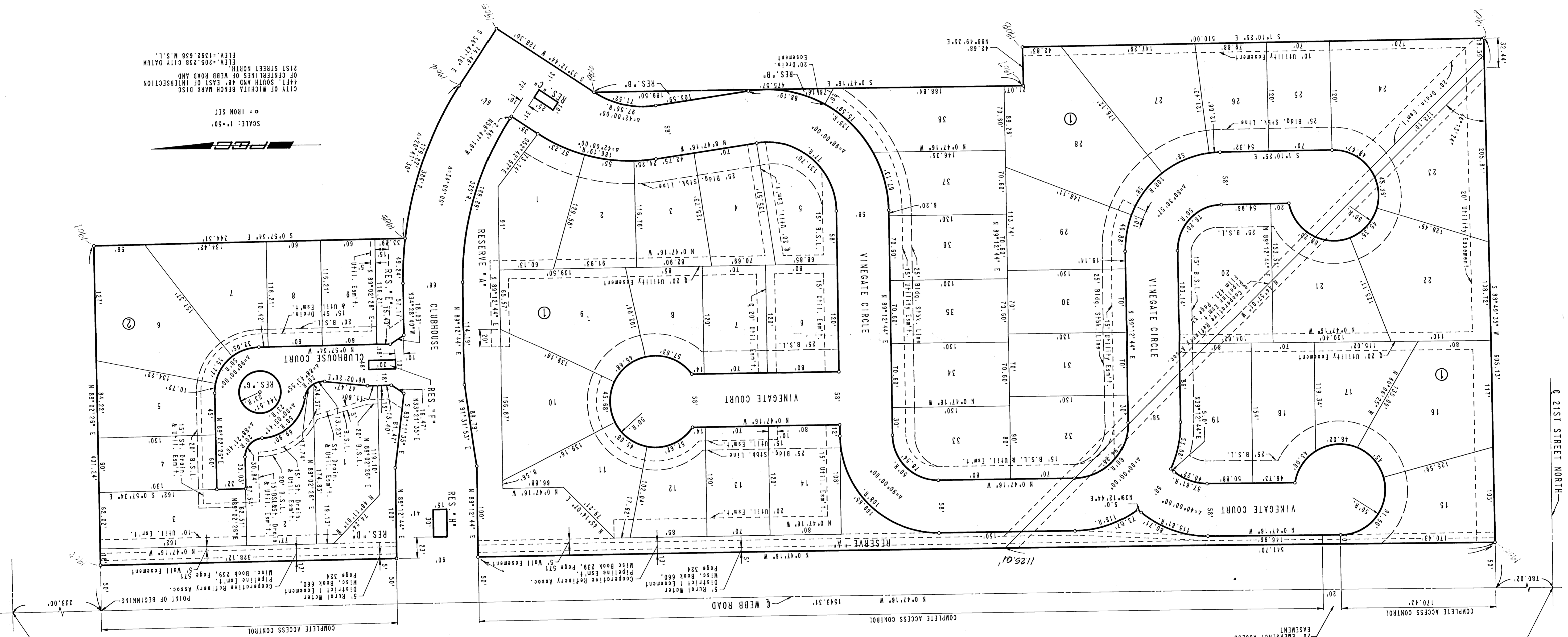


TALLGRASS EAST 5TH ADDITION TO WICHITA, SEDGWICK COUNTY, KANSAS



CITY OF WICHITA BENCH MARK DISC
441' SOUTH AND 48' EAST OF INTERSECTION
OF CENTERLINES OF WEBB ROAD AND
21ST STREET NORTH.
ELEV. = 208.238 CITY DATUM
ELEV. = 1392.638 M.S.L.
SCALE: 1" = 50'
O = IRON SET



N.W. CORNER S.W. 1/4
SEC. 4, 127S, R2E
OF THE 6TH P.M.

S.W. CORNER
SEC. 4, 127S, R2E
OF THE 6TH P.M.