

**BILL G. YUNG DESIGN**  
 WICHITA, KS. 67203  
 4912 E. 29TH STREET NORTH  
 316-833-5567

DATE: MARCH 22, 1992  
 REV. APRIL 14, 1992  
 REV. APRIL 15, 1992

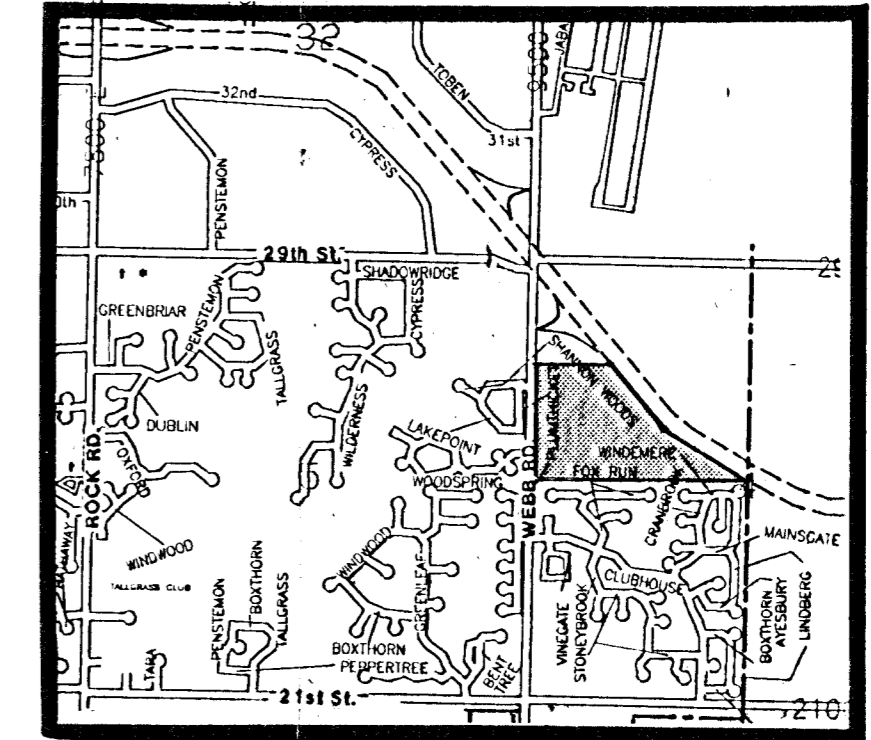
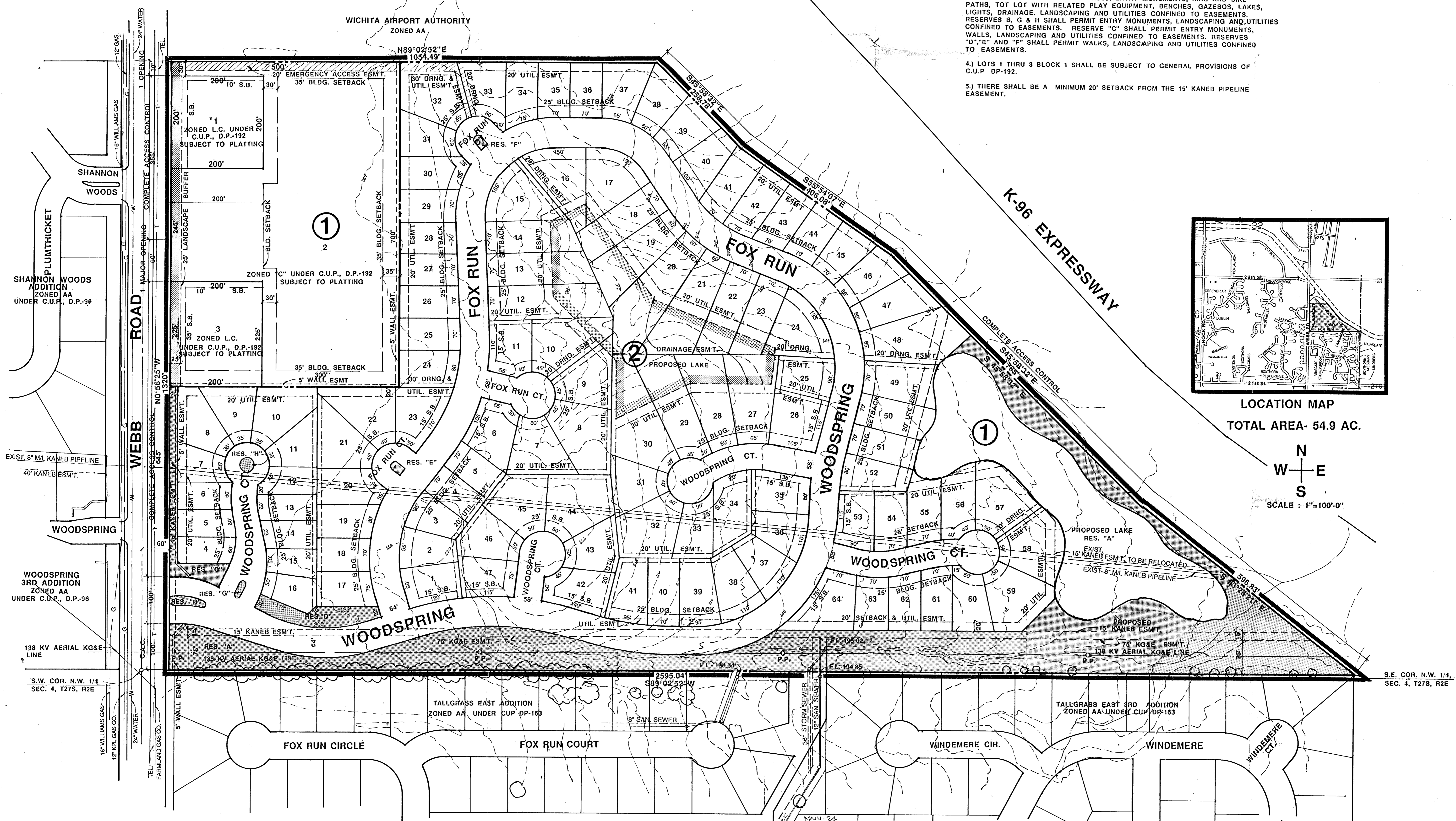
SHEET TITLE  
 PRELIMINARY PLAT

PROJECT  
 TALLGRASS EAST 7TH ADDITION

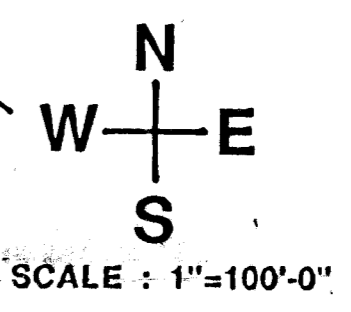
SHEET  
 OF

### NOTES

- 1.) BENCHMARK: CITY DISC AT THE N.W. COR. OF 29TH STREET NORTH AND WEBB ROAD. ELEV.- 220.47 CITY DATUM.
- 2.) A DRAINAGE CONCEPT PLAN SHALL BE PREPARED AND SUBMITTED TO THE CITY ENGINEER BY PROFESSIONAL ENGINEERING CONSULTANTS, WICHITA, KANSAS.
- 3.) RESERVE "A" SHALL PERMIT WALLS, ENTRY MONUMENTS, HIKE AND BIKE PATHS, TOT LOT WITH RELATED PLAY EQUIPMENT, BENCHES, GAZEBOS, LAKES, LIGHTS, DRAINAGE, LANDSCAPING AND UTILITIES CONFINED TO EASEMENTS. RESERVES B, G & H SHALL PERMIT ENTRY MONUMENTS, LANDSCAPING AND UTILITIES CONFINED TO EASEMENTS. RESERVE "C" SHALL PERMIT ENTRY MONUMENTS, WALLS, LANDSCAPING AND UTILITIES CONFINED TO EASEMENTS. RESERVES "D", "E" AND "F" SHALL PERMIT WALKS, LANDSCAPING AND UTILITIES CONFINED TO EASEMENTS.
- 4.) LOTS 1 THRU 3 BLOCK 1 SHALL BE SUBJECT TO GENERAL PROVISIONS OF C.U.P. DP-192.
- 5.) THERE SHALL BE A MINIMUM 20' SETBACK FROM THE 15' KANEB PIPELINE EASEMENT.



LOCATION MAP  
 TOTAL AREA- 54.9 AC.



# PRELIMINARY PLAT TALLGRASS EAST 7TH ADDITION

OWNER: RITCHIE ASSOCIATES, 8100 E. 22ND STREET NORTH, BLDG. #1000, WICHITA, KANSAS 67226 PH. 684-7300