

BILL G. YUNG DESIGN
WICHITA, KANSAS 67201
412 E. 28TH STREET NORTH
316-693-5567

DATE: MARCH 22, 1992
REV: APRIL 11, 1992

SHEET TITLE: DRAINAGE CONCEPT
PRELIMINARY PLAN

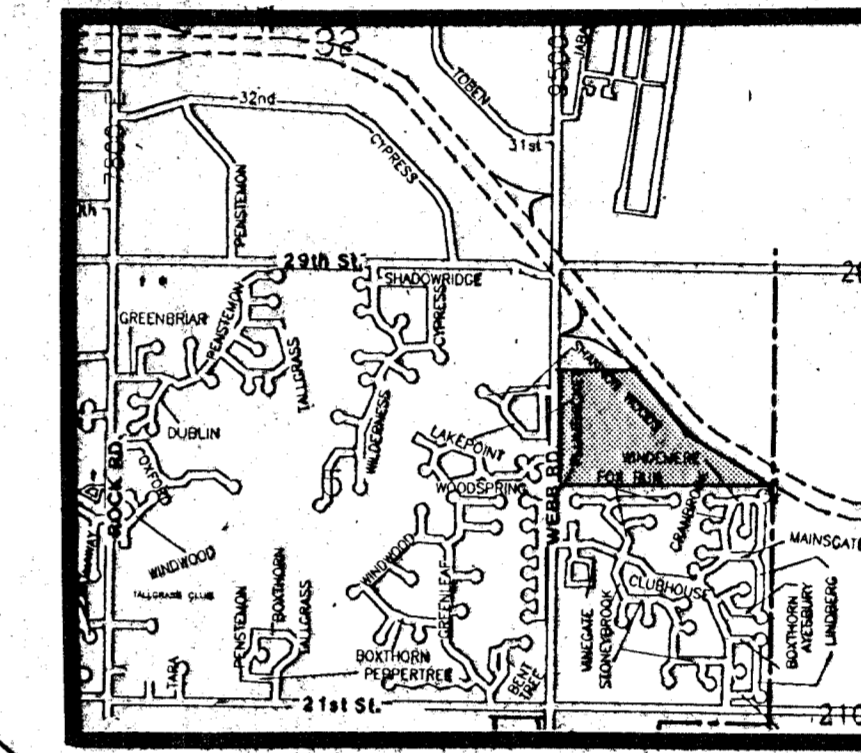
PROJECT: TALLGRASS EAST 7TH ADDITION
SHEET: 1 OF 1

NOTES

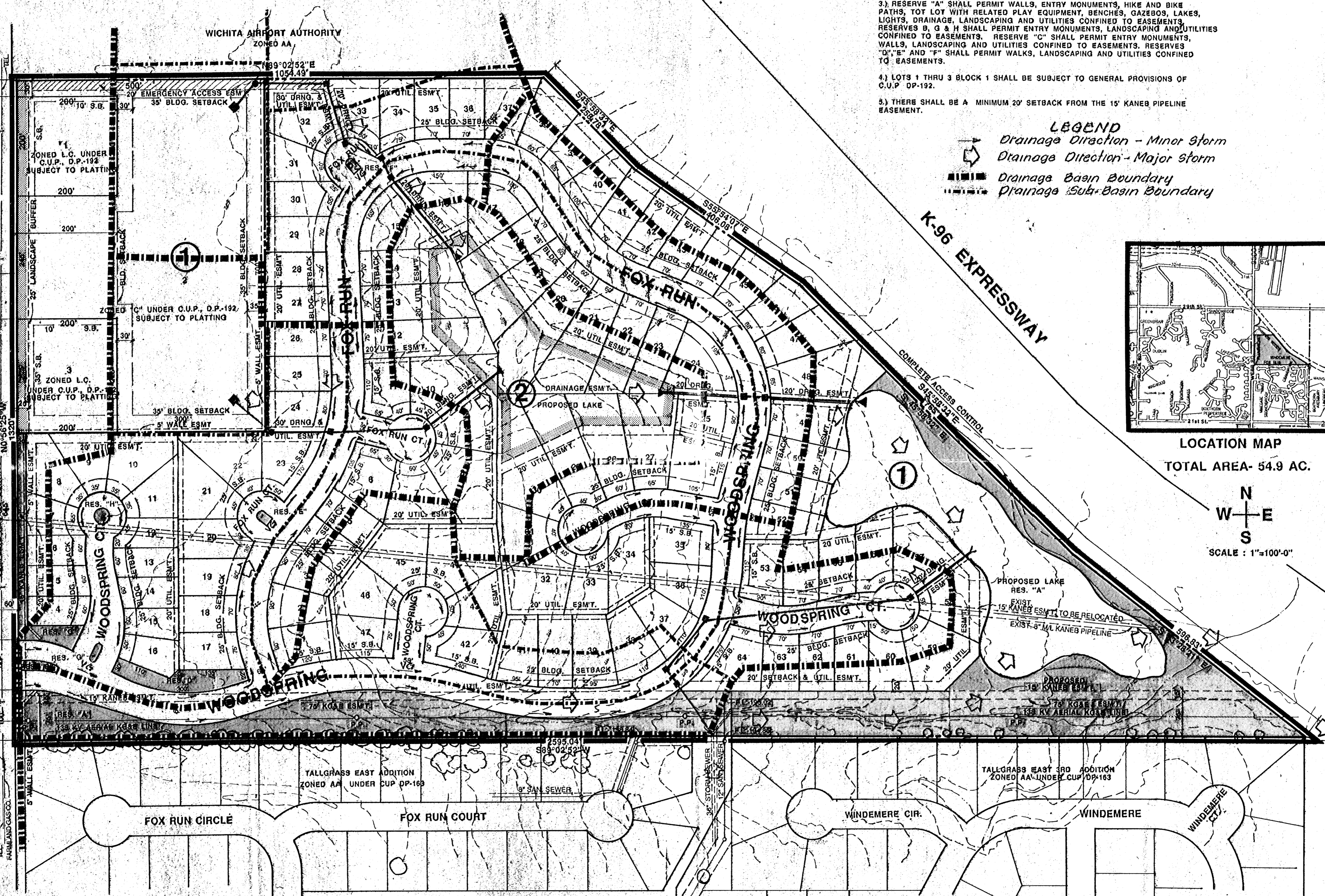
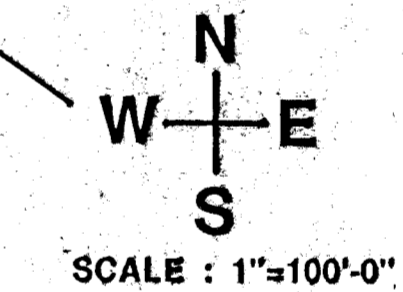
- 1.) BENCHMARK: CITY DISC AT THE N.W. COR. OF 29TH STREET NORTH AND WEBB ROAD. ELEV. - 220.47 CITY DATUM.
- 2.) A DRAINAGE CONCEPT PLAN SHALL BE PREPARED AND SUBMITTED TO THE CITY ENGINEER BY PROFESSIONAL ENGINEERING CONSULTANTS, WICHITA, KANSAS.
- 3.) RESERVE "A" SHALL PERMIT WALLS, ENTRY MONUMENTS, HIKE AND BIKE PATHS, TOT LOT WITH RELATED PLAY EQUIPMENT, BENCHES, GAZEBOS, LAKES, LIGHTS, DRAINAGE, LANDSCAPING AND UTILITIES CONFINED TO EASEMENTS. RESERVES B, G & H SHALL PERMIT ENTRY MONUMENTS, LANDSCAPING AND UTILITIES CONFINED TO EASEMENTS. RESERVE "C" SHALL PERMIT ENTRY MONUMENTS, WALLS, LANDSCAPING AND UTILITIES CONFINED TO EASEMENTS. RESERVES "D", "E" AND "F" SHALL PERMIT WALKS, LANDSCAPING AND UTILITIES CONFINED TO EASEMENTS.
- 4.) LOTS 1 THRU 3 BLOCK 1 SHALL BE SUBJECT TO GENERAL PROVISIONS OF C.U.P. DP-192.
- 5.) THERE SHALL BE A MINIMUM 20' SETBACK FROM THE 15' KANEB PIPELINE EASEMENT.

LEGEND

- Drainage Direction - Minor Storm
- Drainage Direction - Major Storm
- Drainage Basin Boundary
- Drainage Sub-Basin Boundary



LOCATION MAP
TOTAL AREA - 54.9 AC.



DRAINAGE CONCEPT 4-24-92

TALLGRASS EAST 7TH ADDITION

OWNER: RITCHIE ASSOCIATES, 8100 E. 22ND STREET NORTH, BLDG. #1000, WICHITA, KANSAS 67226 PH. 684-7300

PROFESSIONAL ENGINEERING CONSULTANTS, P.A.
ENGINEERS
WICHITA, KANSAS
Designed by: C.S.D.
Drawn by: C.S.
Date: 4-24-92