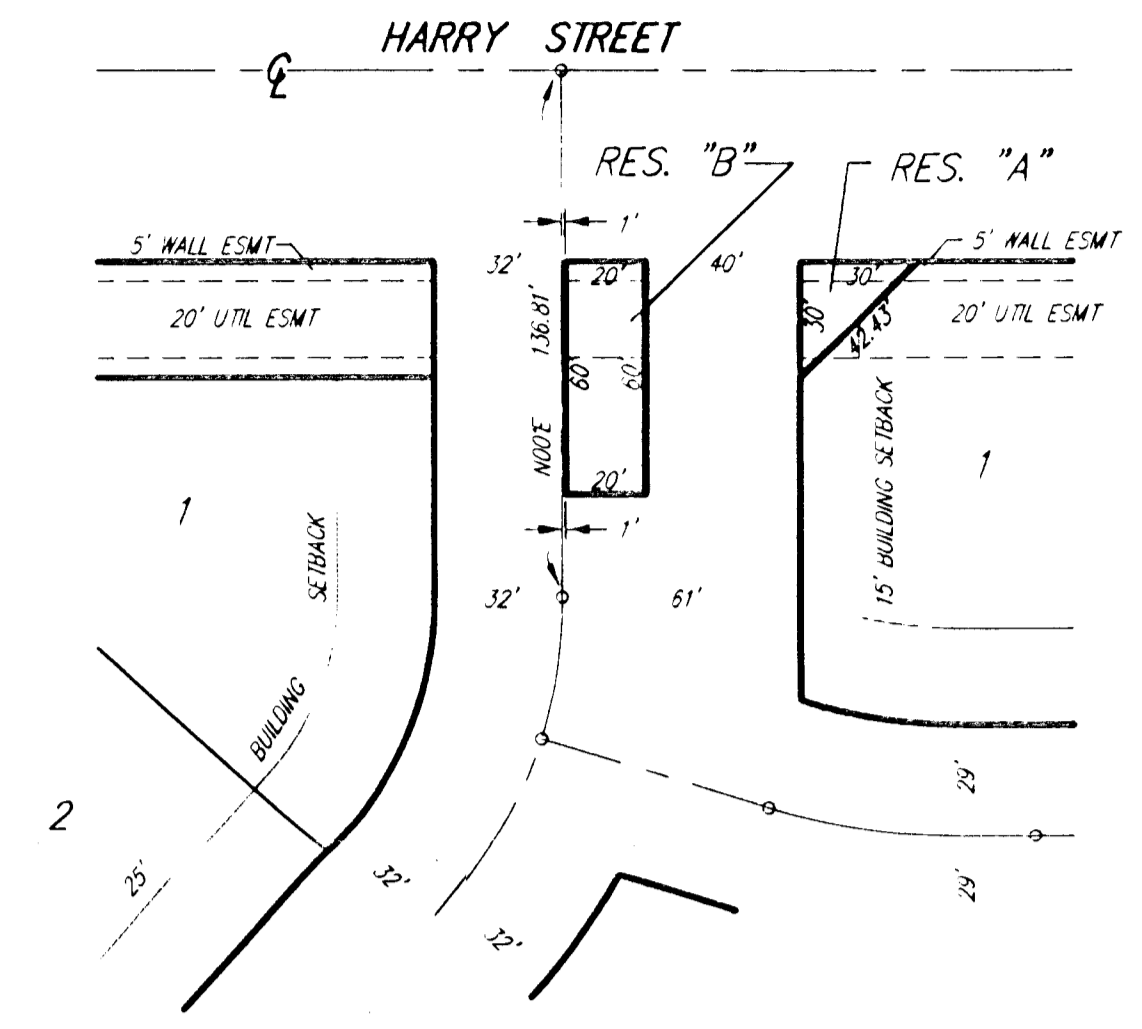
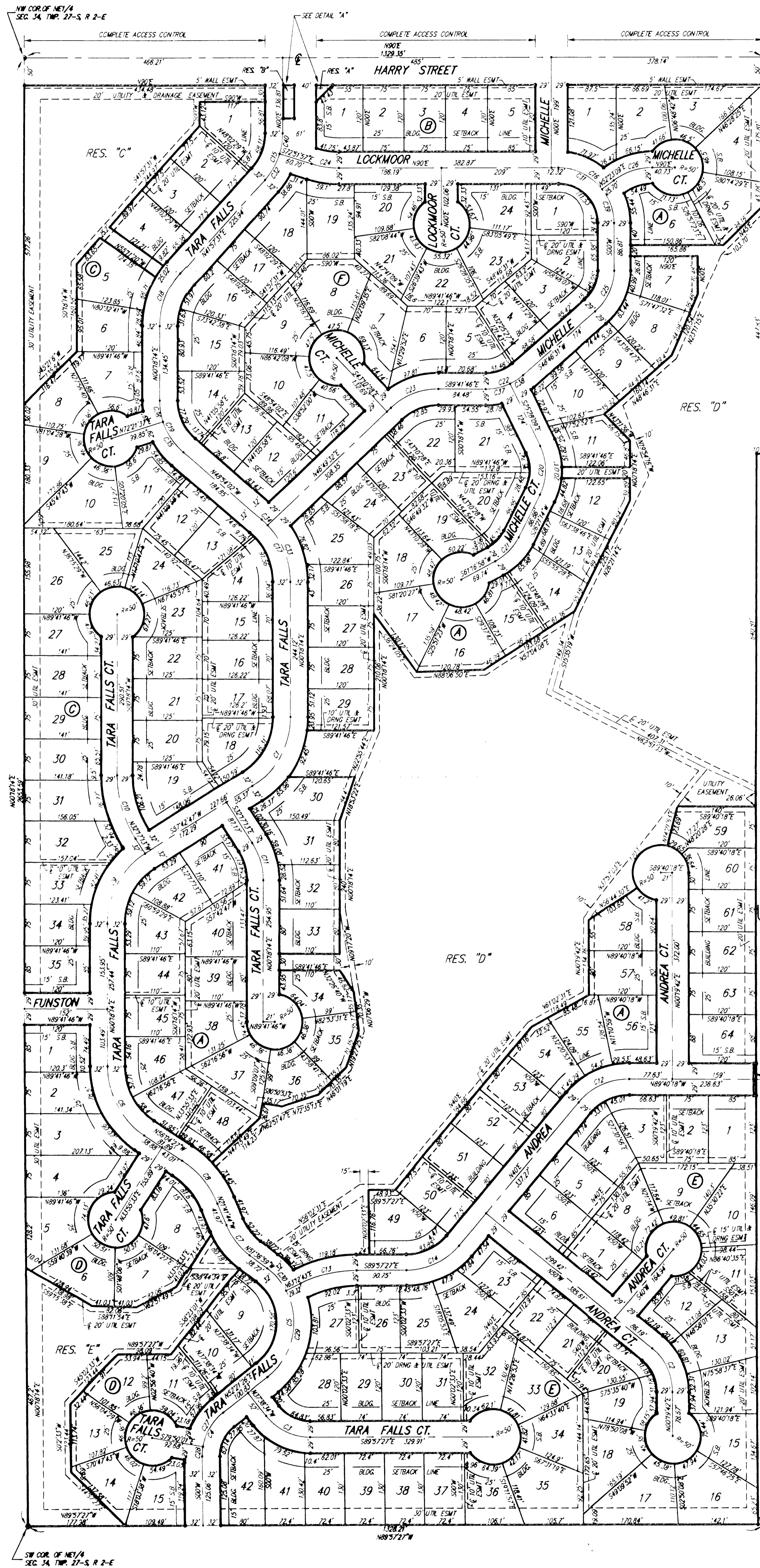


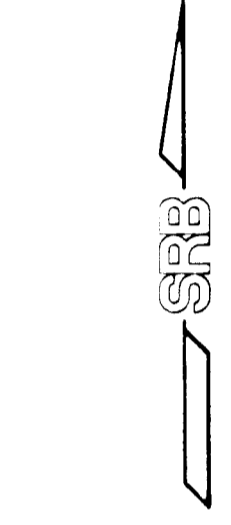
# TARA FALLS ADDITION

SEDGWICK COUNTY, KANSAS



DETAIL "A"  
SCALE: 1" = 50'

OSIE



SCALE: 1" = 100'

S.B. = BUILDING SETBACK

- = 1/2" REBAR W/SRB CAP (SET)
- = 1/2" IRON IN THIMBLE (FOUND)
- = 1/2" REBAR W/AS1117 CAP (FOUND)
- = 400 NAIL (FOUND)

BENCHMARK:  
P.R. SPIKE IN UTILITY POLE 48' WEST AND 40' SOUTH  
OF THE S.W. COR. SEC. 27, T27S, R2E  
ELEV. 1519.19 CITY DATUM  
ELEV. 1344.59 N.G.V.D.

CURVE	LENGTH	RADIUS	DELTA
C1	150.00'	150.00'	57°24'33"
C2	37.84'	100.00'	50°19'42"
C3	31.31'	100.00'	52°18'53"
C4	21.88'	100.00'	52°27'28"
C5	228.65'	128.00'	103°58'29"
C6	147.60'	150.00'	58°24'41"
C7	58.93'	132.00'	29°55'15"
C8	100.80'	168.00'	34°24'43"
C9	150.00'	150.00'	50°00'00"
C10	122.71'	215.72'	102°55'27"
C11	71.10'	125.00'	102°55'27"
C12	103.65'	118.00'	50°19'42"
C13	108.60'	225.50'	28°49'49"
C14	109.18'	125.00'	50°00'00"
C15	91.54'	125.00'	41°51'17"
C16	157.08'	100.00'	100°00'00"
C17	128.82'	150.00'	49°12'16"
C18	108.87'	147.00'	41°39'17"
C19	124.27'	122.00'	49°12'16"
C20	204.65'	100.00'	51°48'51"
C21	60.26'	100.00'	34°55'45"
C22	72.48'	100.00'	41°31'43"
C23	34.26'	125.00'	43°28'42"
C24	50.43'	168.00'	17°28'01"
C25	85.17'	100.00'	48°46'51"
C26	235.31'	112.00'	17°36'51"
C27	23.64'	100.00'	42°12'27"
C28	17.74'	100.00'	10°09'59"
C29	174.05'	128.00'	29°08'43"
C30	54.60'	128.00'	24°49'42"
C31	31.41'	100.00'	52°23'09"
C32	54.16'	125.00'	24°49'28"
C33	113.83'	150.00'	43°28'42"
C34	14.29'	150.00'	05°43'34"
C35	66.56'	122.00'	31°15'39"
C36	28.11'	122.00'	17°56'37"
C37	44.58'	100.00'	25°46'51"
C38	27.50'	100.00'	15°45'20"
C39	65.65'	100.00'	37°36'51"
C40	37.38'	125.00'	17°09'03"

BLOCK	LOT NO.	ELEVATION (N.G.V.D.)
A	5, 6, 7, 8, 9, 10	1327
	11, 12, 13, 14 & 15	
	16, 17	
A	27, 28, 29, 30, 31, 32	1336
	33, 34, 35, 36, 37	
	48, 49, 50, 51, 52, 53	
	54, 55, 56, 57, 58	
	59, 60, 61 & 62	
C	1, 2, 3, 4, 5	1331
	6, 7 & 8	
D	5, 6, 7, 8, 9	1339
	10, 11 & 12	
D	13	1340
D	14 & 15	1341