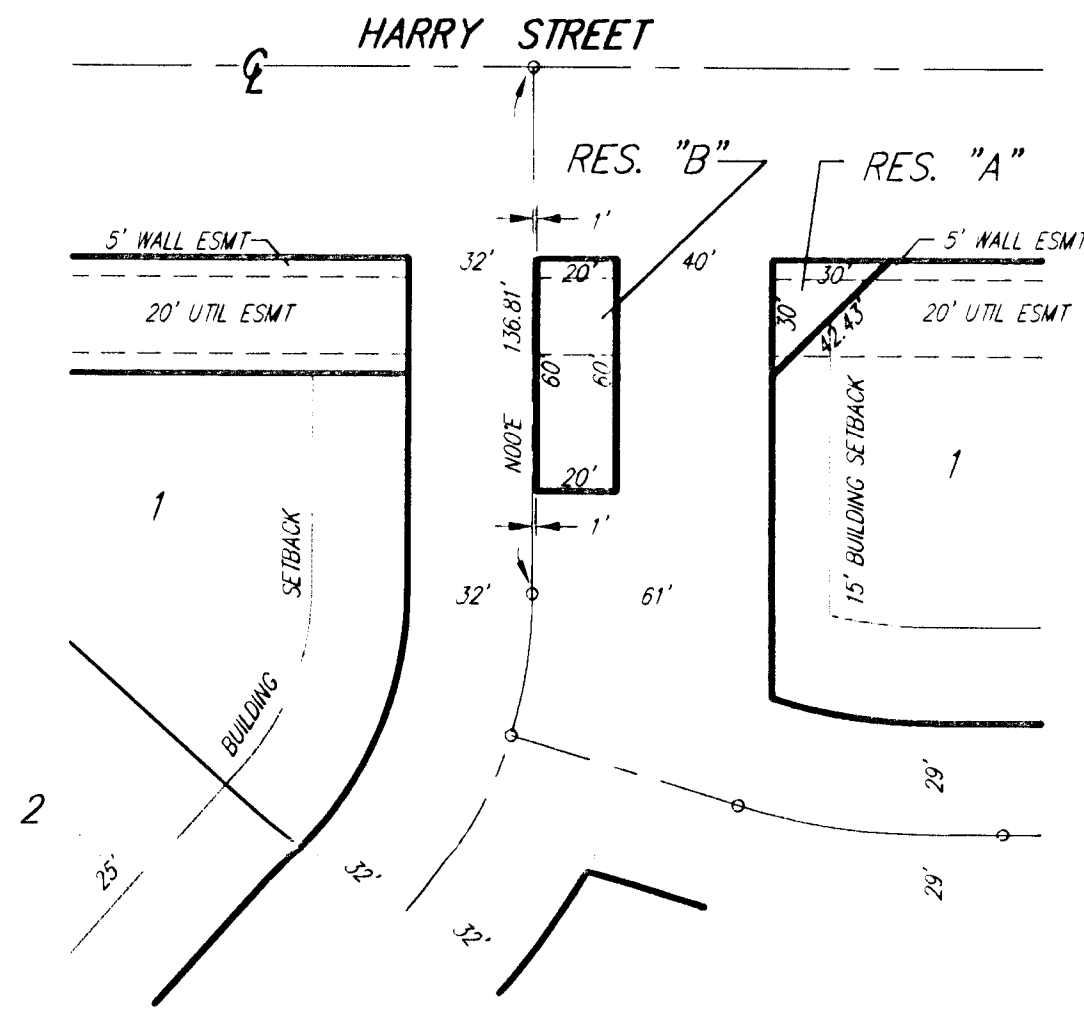
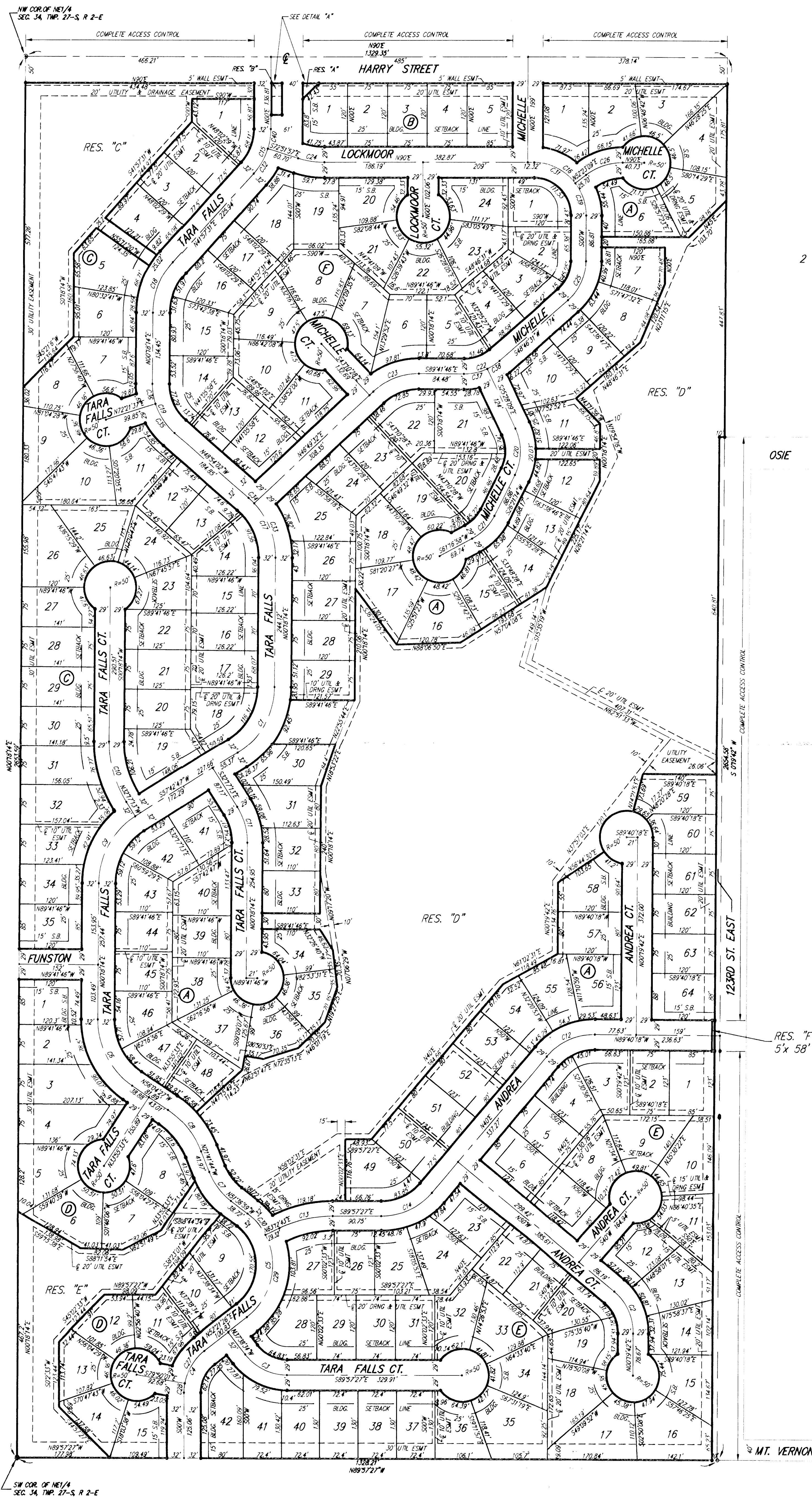


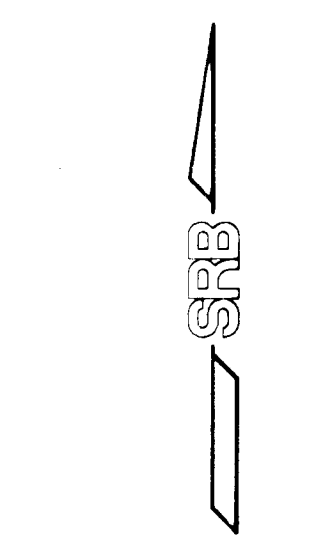
TARA FALLS ADDITION

SEDGWICK COUNTY, KANSAS



DETAIL "A"
SCALE: 1" = 50'

OSIE



SCALE: 1" = 100'

S.B. = BUILDING SETBACK

- = 1/2" REBAR #5/SRB CAP (SET)
- ⊗ = 1/2" IRON IN TRIMBLE (FOUND)
- ⊕ = 1/2" REBAR #4/S1117 CAP (FOUND)
- = 40# NAIL (FOUND)

BENCHMARK:
P.R. SPIKE IN UTILITY POLE, 48' WEST AND 40' SOUTH
OF THE S.W. COR. SEC. 27, T21S, R2E
ELEV. 1519.18 CITY DATUM
ELEV. 1344.53 N.G.D.M.

CURVE	LENGTH	RADIUS	DELTA
C1	150.307	150.00	57°24'33"
C2	87.84	100.00	50°19'42"
C3	31.31	100.00	16°59'53"
C4	31.38	100.00	52°21'26"
C5	228.65	126.00	103°50'25"
C6	147.607	150.00	56°22'41"
C7	68.83	135.00	42°55'15"
C8	100.80	168.00	34°22'43"
C9	150.307	150.00	57°24'33"
C10	162.71	218.72	32°32'27"
C11	71.02	125.00	33°55'27"
C12	103.65	118.00	50°19'42"
C13	105.60	225.50	28°49'40"
C14	108.18	125.00	50°02'33"
C15	21.54	125.00	4°53'11"
C16	157.08	100.00	90°00'00"
C17	128.82	150.00	49°12'16"
C18	108.87	141.00	43°39'17"
C19	104.22	122.00	49°12'16"
C20	30.45	100.00	51°40'23"
C21	60.90	100.00	34°55'45"
C22	22.48	100.00	41°31'43"
C23	34.98	125.00	43°39'17"
C24	50.43	168.82	17°08'03"
C25	85.13	100.00	49°46'31"
C26	75.53	116.00	37°36'57"
C27	121.84	100.00	49°12'16"
C28	12.74	100.00	10°59'59"
C29	174.05	126.00	79°58'43"
C30	34.80	126.00	24°49'42"
C31	21.43	100.00	4°53'11"
C32	54.16	125.00	24°49'42"
C33	113.83	150.00	43°28'42"
C34	74.89	150.00	10°43'34"
C35	68.86	122.00	37°15'59"
C36	58.21	122.00	17°56'17"
C37	44.88	100.00	25°46'23"
C38	22.50	100.00	15°45'20"
C39	63.63	100.00	17°28'51"
C40	32.38	125.00	17°08'03"

BLOCK	LOT NO.	ELEVATION FOR LOWEST OPENING INTO STRUCTURES (NGVD)
A	5, 6, 7, 8, 9, 10	1327
A	11, 12, 13, 14, 15	1327
A	16, 17	1327
A	27, 28, 29, 30, 31, 32	1308
A	33, 34, 35, 36, 37	1308
A	48, 49, 50, 51, 52, 53	1308
A	54, 55, 56, 57, 58	1308
A	59, 60, 61, 62	1308
C	1, 2, 3, 4, 5	1337
C	6, 7, 8	1337
D	5, 6, 7, 8, 9	1339
D	10, 11, 12	1339
D	13	1340
D	14, 15	1341