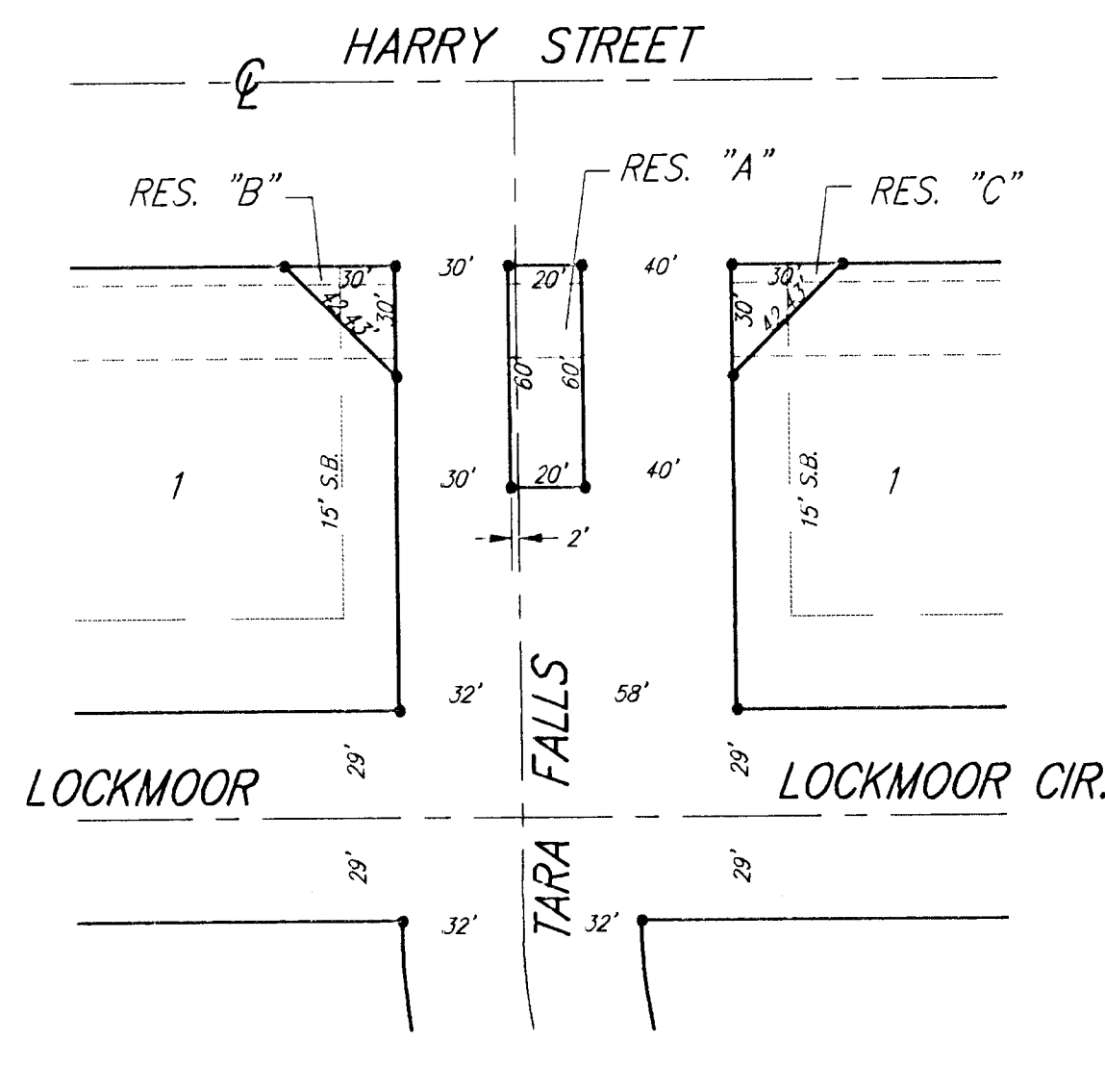
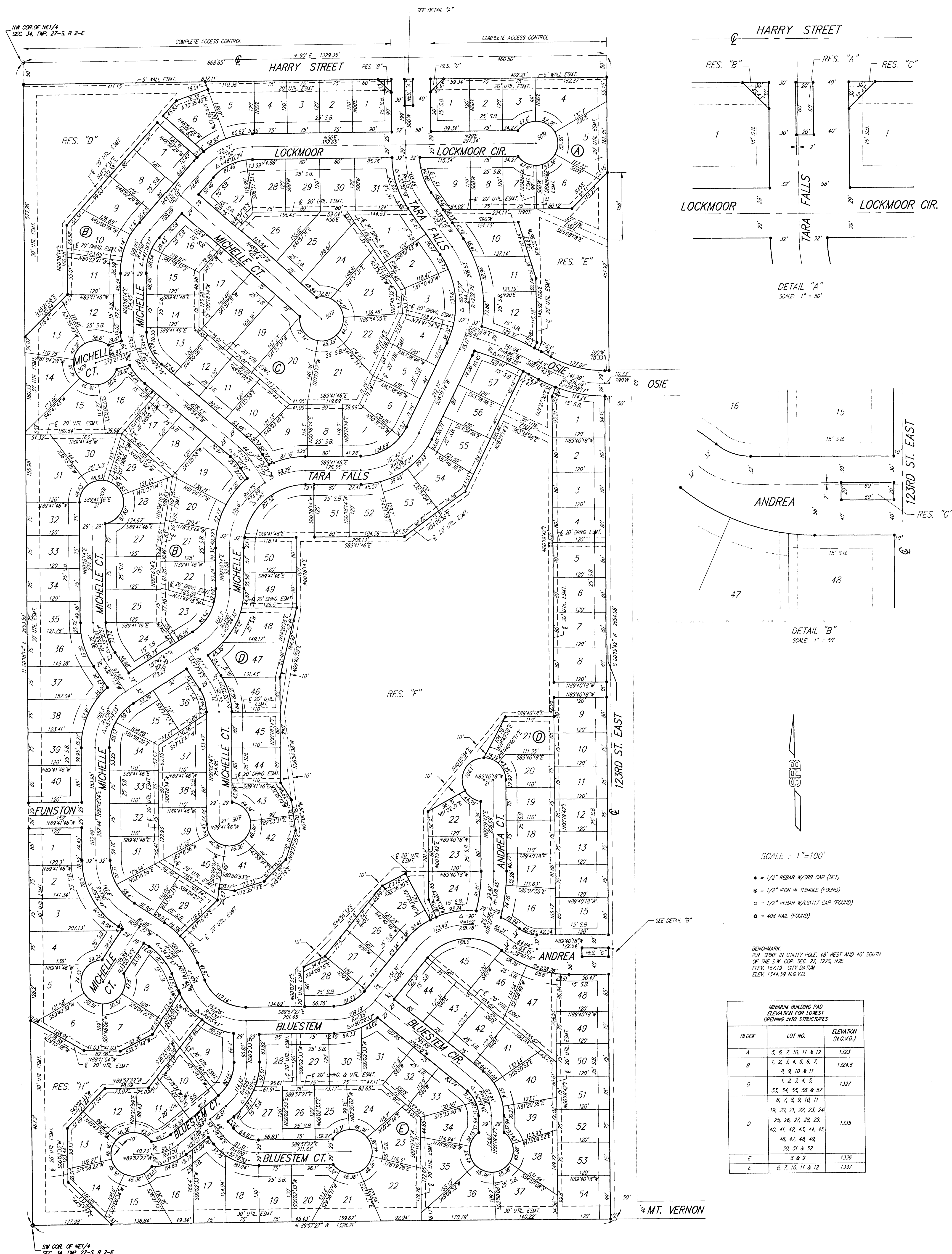
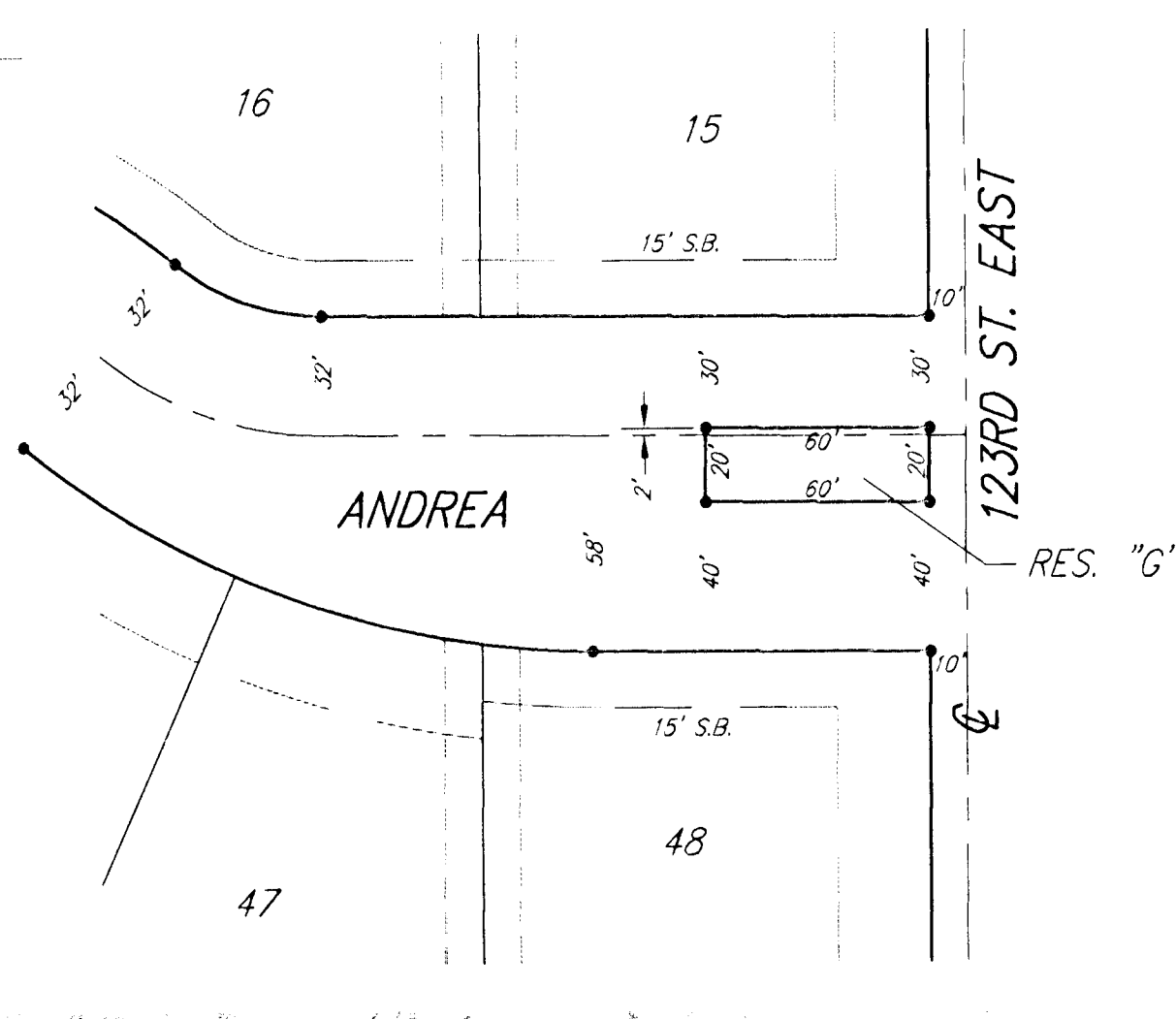


# TARA FALLS ADDITION

SEDGWICK COUNTY, KANSAS



DETAIL "A"  
SCALE: 1" = 50'



DETAIL "B"  
SCALE: 1" = 50'

SCALE: 1" = 100'

- = 1/2" REBAR W/SRB CAP (SET)
- = 1/2" IRON IN TANGIBLE (FOUND)
- = 1/2" REBAR W/S1117 CAP (FOUND)
- = 40# NAIL (FOUND)

BENCHMARK:  
R.R. SPIKE IN UTILITY POLE, 48' WEST AND 40' SOUTH  
OF THE S.W. COR. SEC. 22, T27S, R2E  
ELEV. 1527.19 CITY DATUM  
ELEV. 1344.59 N.G.V.D.

BLOCK	LOT NO.	ELEVATION (N.G.V.D.)
A	5, 6, 7, 10, 11 & 12	1323
B	1, 2, 3, 4, 5, 6, 7, 8, 9, 10 & 11	1324.6
D	1, 2, 3, 4, 5, 51, 54, 55, 56 & 57	1327
D	6, 7, 8, 9, 10, 11, 19, 20, 21, 22, 23, 24, 25, 26, 27, 28, 29, 40, 41, 42, 43, 44, 45, 46, 47, 48, 49, 50, 51 & 52	1335
E	8 & 9	1336
E	6, 7, 10, 11 & 12	1337