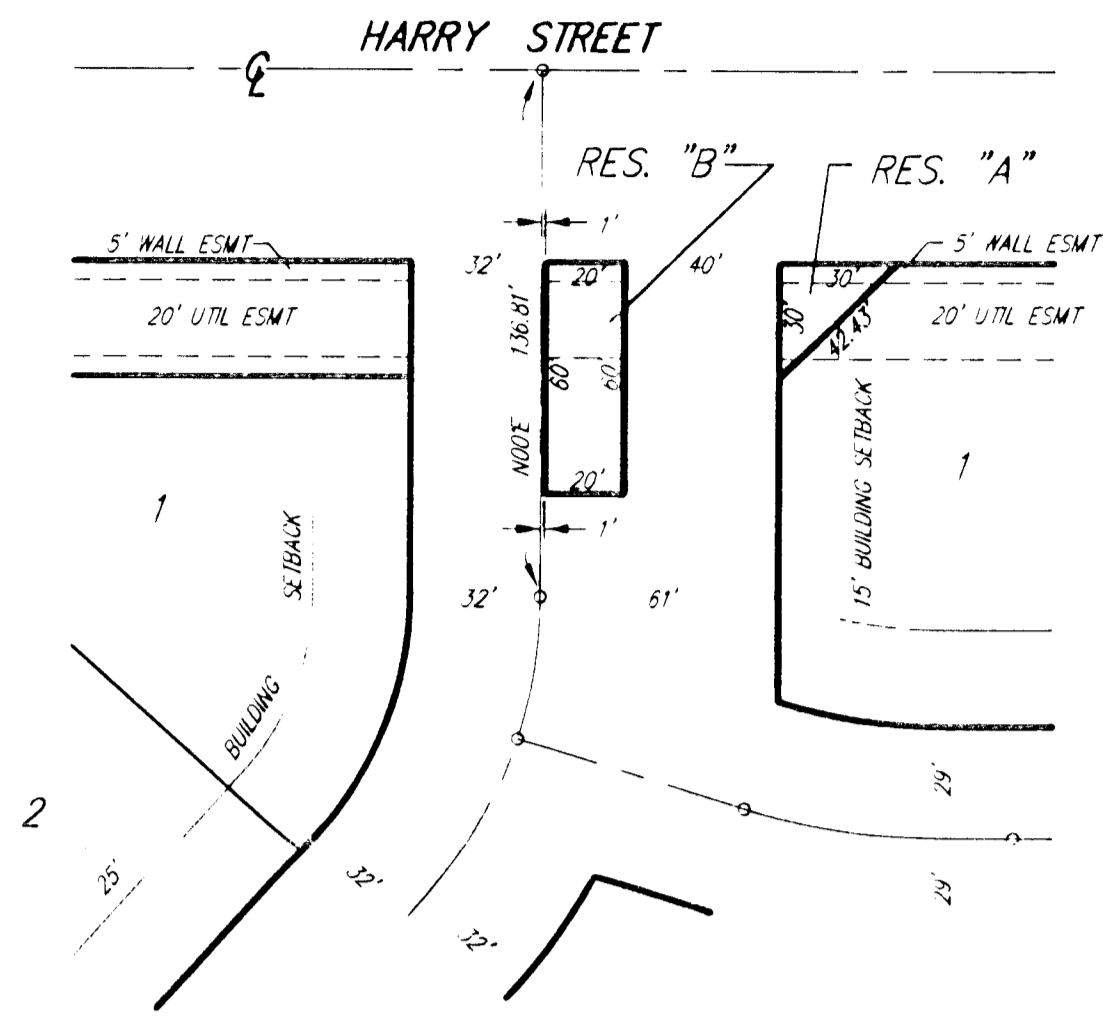
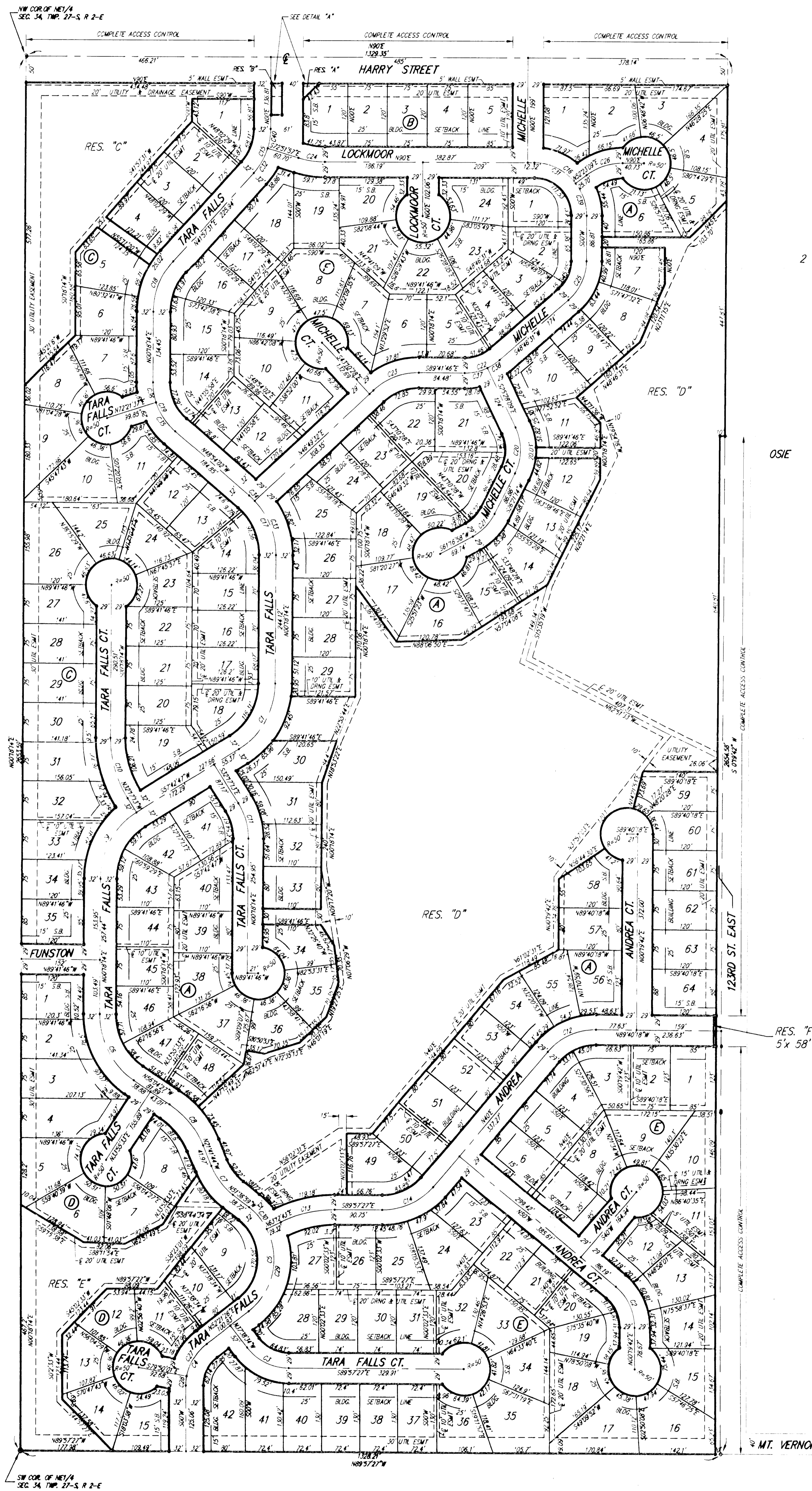


TARA FALLS ADDITION

SEDGWICK COUNTY, KANSAS



DETAIL "A"
SCALE: 1" = 50'

SCALE: 1" = 100'

- = 1/2" REBAR #5/SRB CAP (SET)
- = 1/2" IRON N THIMBLE (FOUND)
- = 1/2" REBAR #4/SRB CAP (FOUND)
- = 40# NAIL (FOUND)

BENCHMARK
P.R. SPIKE IN UTILITY POLE, 48' WEST AND 40' SOUTH
OF THE S.W. COR. SEC. 27, T27S, R2E
ELEV. 1244.59 CITY DATUM
ELEV. 1244.59 M.G.V.D.

CURVE	LENGTH	RADIUS	DELTA
C1	150.30	150.00	3272.431
C2	82.84	100.00	3079.242
C3	91.11	100.00	5278.531
C4	91.38	100.00	5271.26
C5	228.65	128.00	10358.225
C6	142.00	150.00	5879.241
C7	68.83	112.00	2825.715
C8	100.80	168.00	2422.431
C9	100.30	150.00	5272.431
C10	122.71	212.00	12152.27
C11	71.10	125.00	12152.27
C12	102.65	118.00	5079.427
C13	108.50	225.00	2849.497
C14	109.18	125.00	5079.241
C15	91.54	125.00	4152.711
C16	152.78	100.00	3070.007
C17	228.65	150.00	4972.76
C18	108.87	142.00	4152.711
C19	104.77	122.00	4972.76
C20	30.45	100.00	5149.237
C21	60.90	100.00	2452.467
C22	22.48	100.00	4152.711
C23	24.08	125.00	4328.46
C24	50.43	188.62	1728.037
C25	55.57	150.00	4846.317
C26	23.83	112.00	3728.921
C27	23.64	100.00	4271.227
C28	17.74	100.00	1079.597
C29	174.05	128.00	2328.427
C30	24.60	128.00	4489.247
C31	91.43	100.00	5271.267
C32	54.16	125.00	2449.287
C33	113.83	150.00	4328.467
C34	14.59	150.00	2879.747
C35	66.56	122.00	3175.397
C36	38.21	122.00	1726.327
C37	44.88	150.00	2246.237
C38	22.50	100.00	1545.207
C39	65.65	100.00	3726.517
C40	37.38	125.00	1728.037

BLOCK	LOT NO.	ELEVATION (M.G.V.D.)
A	5, 6, 7, 8, 9, 10	1327
	11, 12, 13, 14, 15	
	16, 17	
A	27, 28, 29, 30, 31, 32	1336
	33, 34, 35, 36, 37	
	48, 49, 50, 51, 52, 53	
	54, 55, 56, 57, 58	
	59, 60, 61, 62	
C	1, 2, 3, 4, 5	1331
	6, 7, 8	
D	5, 6, 7, 8, 9	1339
	10, 11, 12	
D	13	1340
	14, 15	