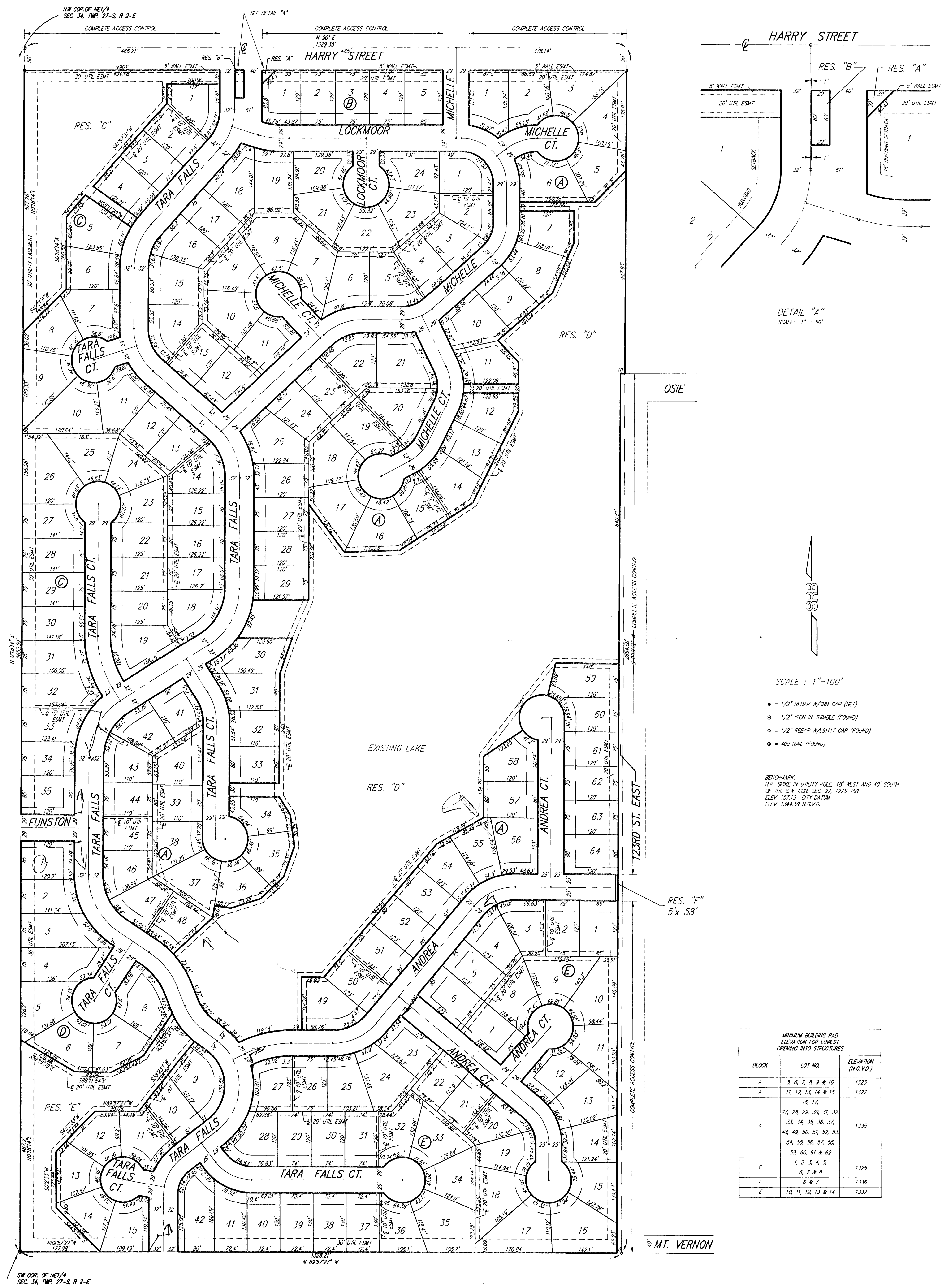


# TARA FALLS ADDITION

SEDGWICK COUNTY, KANSAS



SCALE : 1"=100'

- = 1/2" REBAR W/3RD CAP (SET)
- ⊙ = 1/2" IRON IN THUMB (FOUND)
- = 1/2" REBAR W/ASPH/117 CAP (FOUND)
- ⦿ = 40# NAIL (FOUND)

BENCHMARK:  
P.R. SPIKE IN UTILITY POLE, 48' WEST AND 40' SOUTH  
OF THE SW COR. SEC. 27, T27S, R2E  
ELEV. 1571.9 CITY DATUM  
ELEV. 1344.93 M.G.V.D.

BLOCK	LOT NO.	ELEVATION (M.G.V.D.)
A	5, 6, 7, 8, 9 & 10	1,323
A	11, 12, 13, 14 & 15	1,327
A	16, 17, 27, 28, 29, 30, 31, 32, 33, 34, 35, 36, 37, 48, 49, 50, 51, 52, 53, 54, 55, 56, 57, 58, 59, 60, 61 & 62	1,335
C	1, 2, 3, 4, 5	1,325
E	6, 7 & 8	1,336
E	9 & 7	1,336
E	10, 11, 12, 13 & 14	1,337