

JAMES R. NAYLOR III & WIFE
ZONED R1

CEDAR DOWNS
ZONED R1

CEDAR CREEK DRIVE

CEDAR DOWNS
ZONED R1

N.W. COR., NE 1/4 12&27&28W

COMPLETE ACCESS CONTROL
339.20'

21ST STREET NORTH

7'x3' RCB 188'0"140'E 2893.15'

F.L. 1347.81' COMPLETE ACCESS CONTROL
837.41'

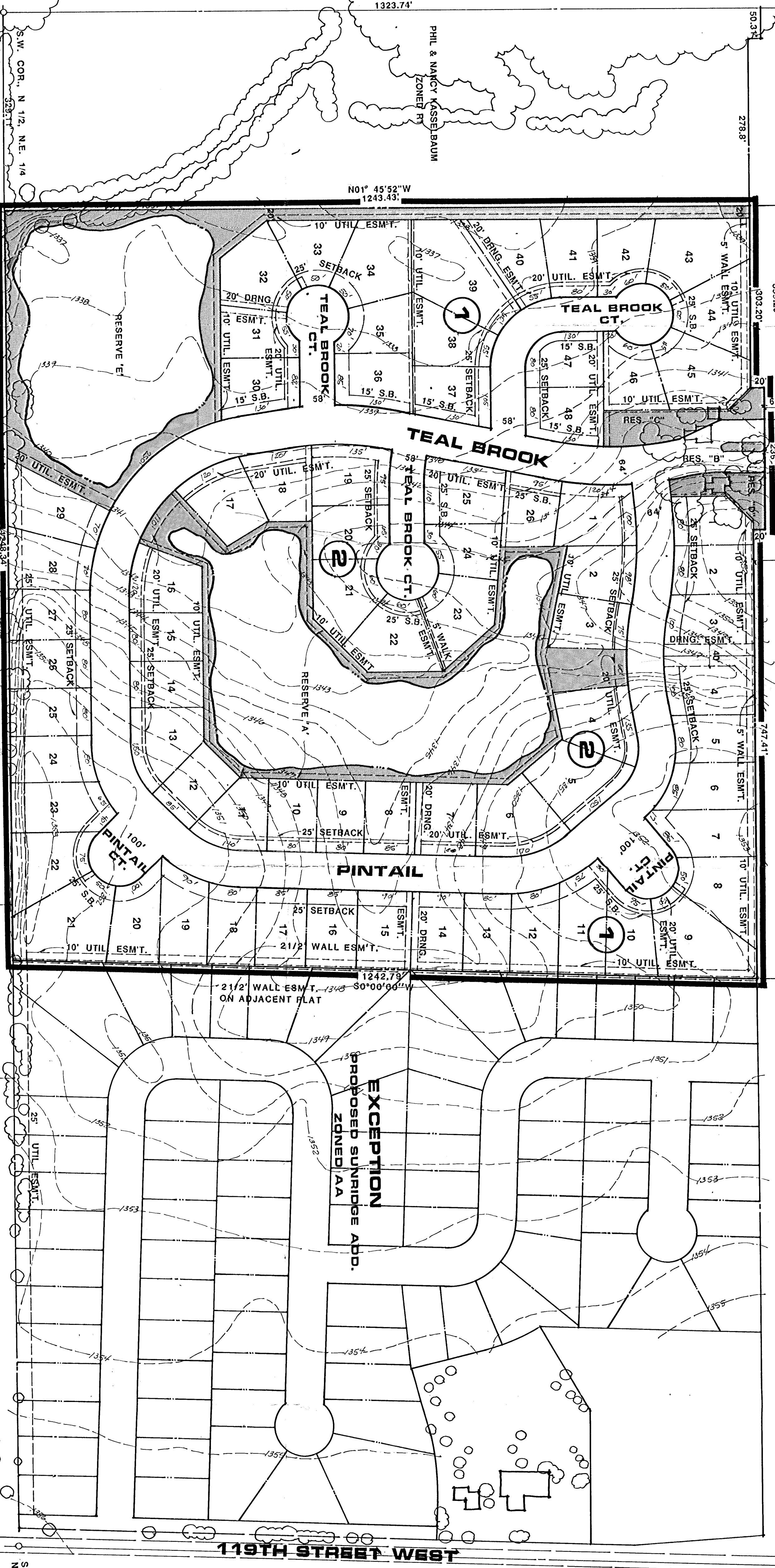
R/W ACQUIRED BY WARRANT DEEDS,
FILM 191, PAGE 1853, 1859 AND 1867.

NE COR., NE 1/4 SEC. 12,
127S, 28W

21st St
127S

PHIL & NANCY KASSA BAUM
ZONED R1

N01° 45'52"W
1243.43'



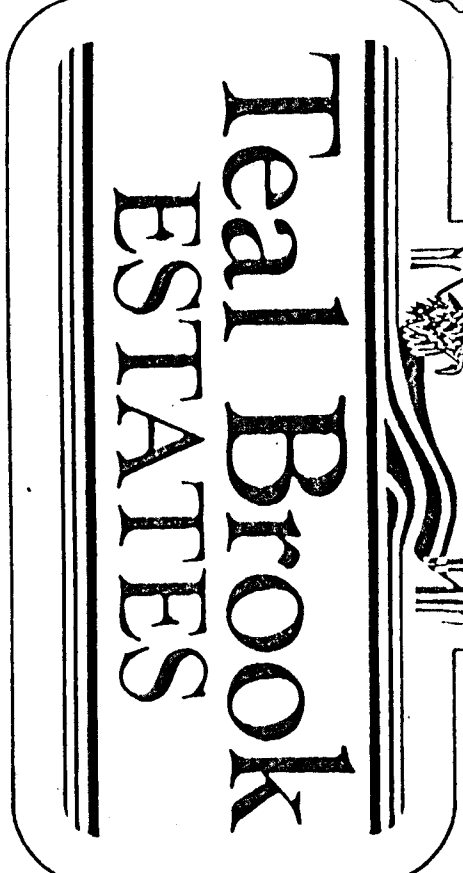
EXCEPTION
PROPOSED SURVIVOR ADD.
ZONED R1A

119TH STREET WEST

SE. COR. NORTH 12,
NE 1/4, 12&27&28W

NOTES

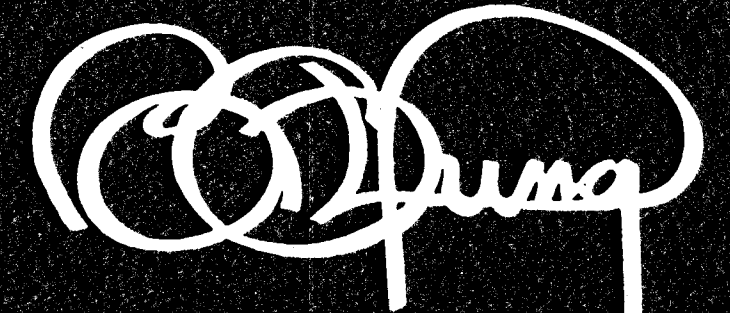
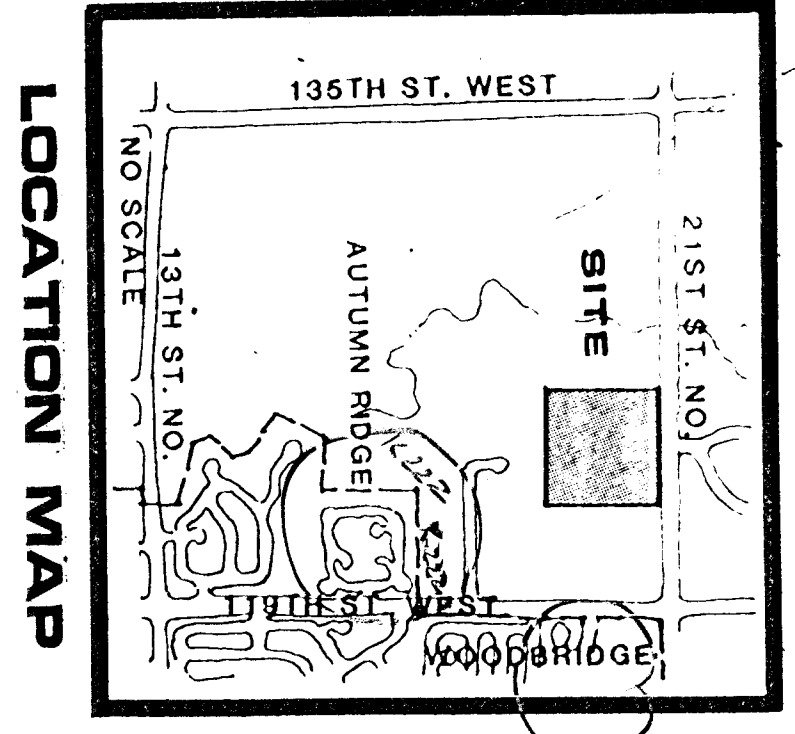
DRAINAGE CONCEPT PLAN TO BE PREPARED BY MOEHRING & ASSOCIATES.
 BENCHMARK: CITY DISC 79' S& 46' E OF THIMBLE (NE COR. SEC. 12)
 ELEV.: 1389.48 MSL 172.08 CITY DATUM
 RESERVES ARE ARE FOR LAKES, DRAINAGE, WALKS, LANDSCAPING,
 IRRIGATION, GAZEBO AND UTILITIES SANITARY LINES,
 RESERVE E IS ALSO FOR CONST. OF SAN. LIFT STATION.
 RESERVES B&C&D ARE FOR LANDSCAPING, IRRIGATION, ENTRY
 MONUMENTS AND UTILITIES CONFINED TO ES.W.T'S.



PRELIMINARY PLAT

TEAL BROOK ESTATES

OWNER: JERRICK CORPORATION, 284 E. DOUGLAS, SUITE 200, WICHITA, KS. 67202 PH. 265-2727



BILL G. YUNG DESIGN
 4912 E. 29TH STREET NORTH, WICHITA, KS 67220 316-683-5587

date JULY 7, 1988
 rev.

sheet title
 PRELIMINARY PLAT

project
 TEAL BROOK ESTATES

sheet
 of