

# TEAL BROOK ESTATES

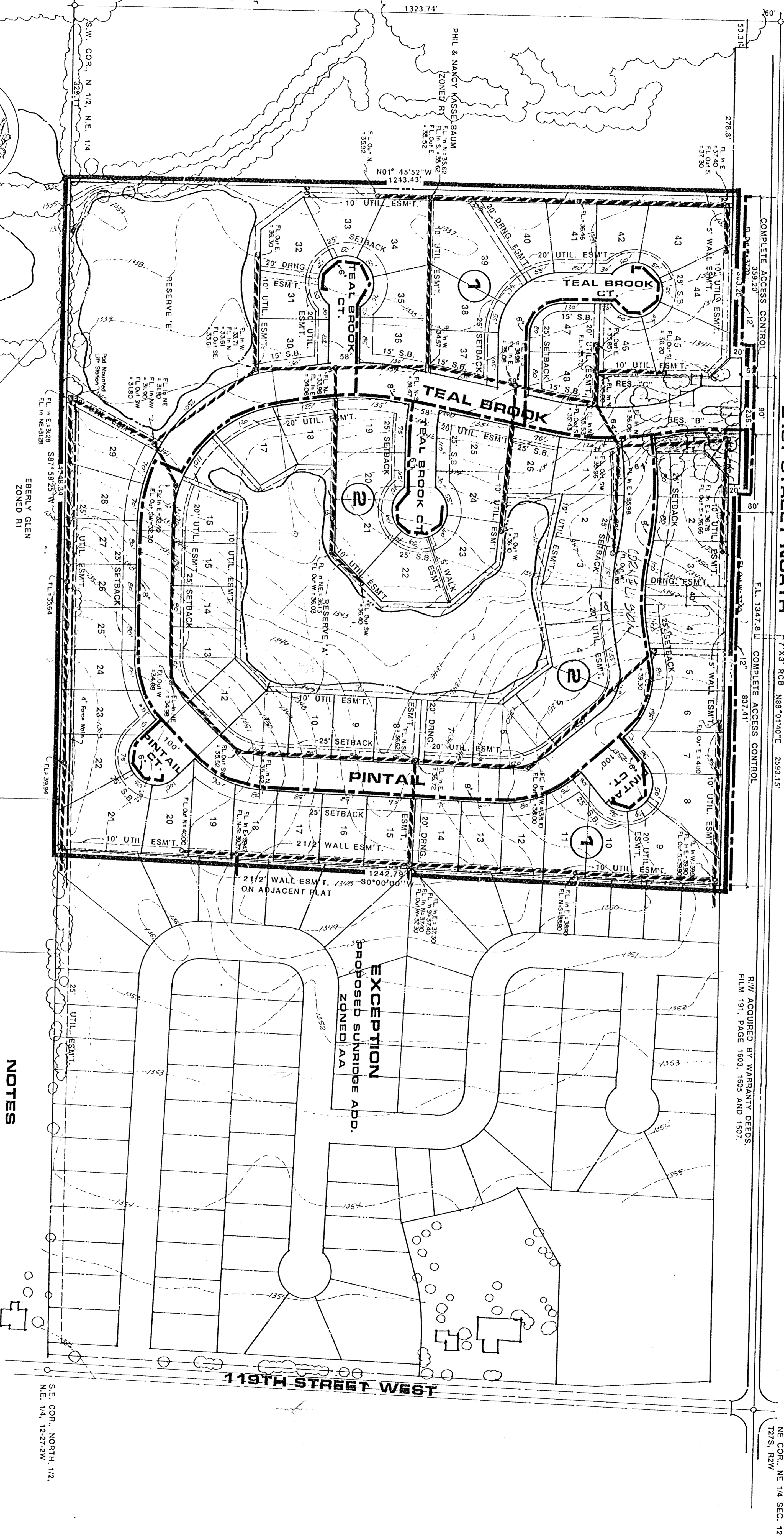
OWNER: JERRICK CORPORATION, 224 E. DOUGLAS, SUITE 200, WICHITA, KS. 67202 PH. 265-2727



PRELIMINARY PLAT

MOEHRING & ASSOCIATES  
CONSULTING ENGINEERS

WATER & SEWER  
PLAN



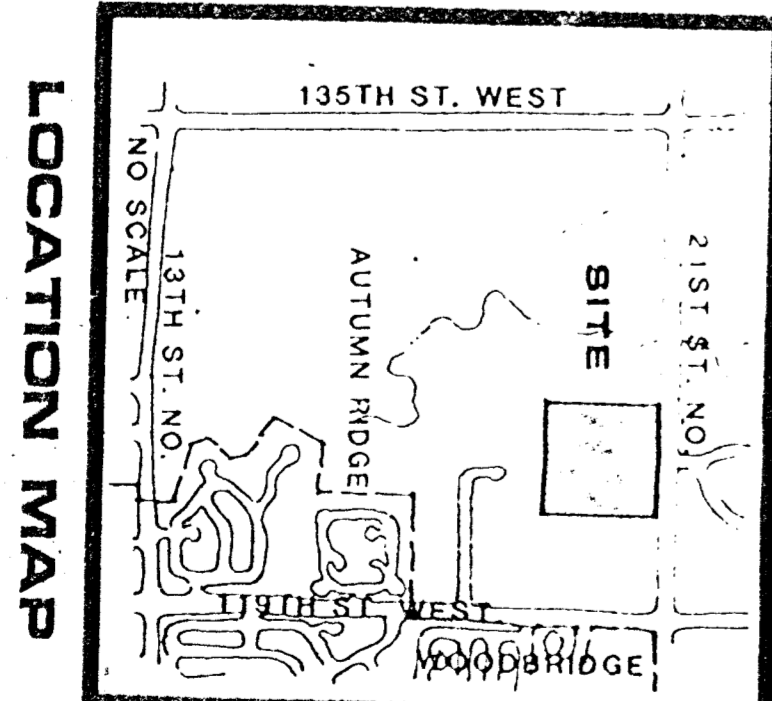
**NOTES**

DRAINAGE CONCEPT PLAN TO BE PREPARED BY MOEHRING & ASSOCIATES.  
BENCHMARK: CITY DISC 79 S. & 46' E. OF THIMBLE (N.E. COR. SEC. 12)  
ELEV. 1359.48 MSL 17208 CITY DATUM

RESERVES ARE FOR LAKES, DRAINAGE, WALLS, LANDSCAPING,  
IRRIGATION, GAZEBOS, AND UTILITIES CONFINED TO ESM.T.  
RESERVE E IS ALSO FOR CONST. OF SAN. LIFT STATION.

RESERVES B, C, D ARE FOR LANDSCAPING, IRRIGATION, ENTRY  
MONUMENTS AND UTILITIES CONFINED TO ESM.T.S.

**EXCEPTION**  
PROPOSED SUNRIDGE ADD.  
ZONED AA

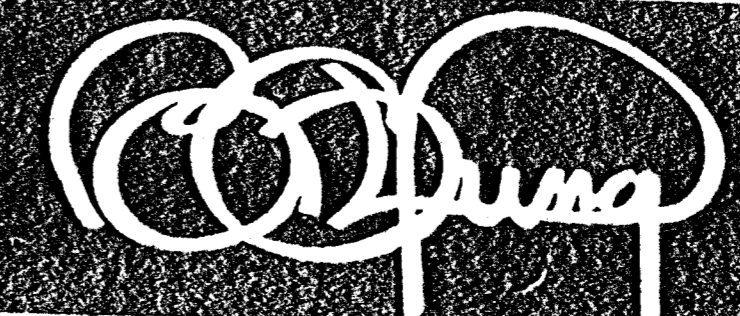


sheet of

project  
TEAL BROOK ESTATES

sheet title  
PRELIMINARY PLAT

date JULY 7, 1988  
rev.



**BILL G. YUNG DESIGN**  
4912 E. 29TH STREET NORTH, WICHITA, KS 67220  
316-683-6567