

JAMES R. NAYLOR III & WIFE
ZONED R1

CEDAR DOWNS.
ZONED R1

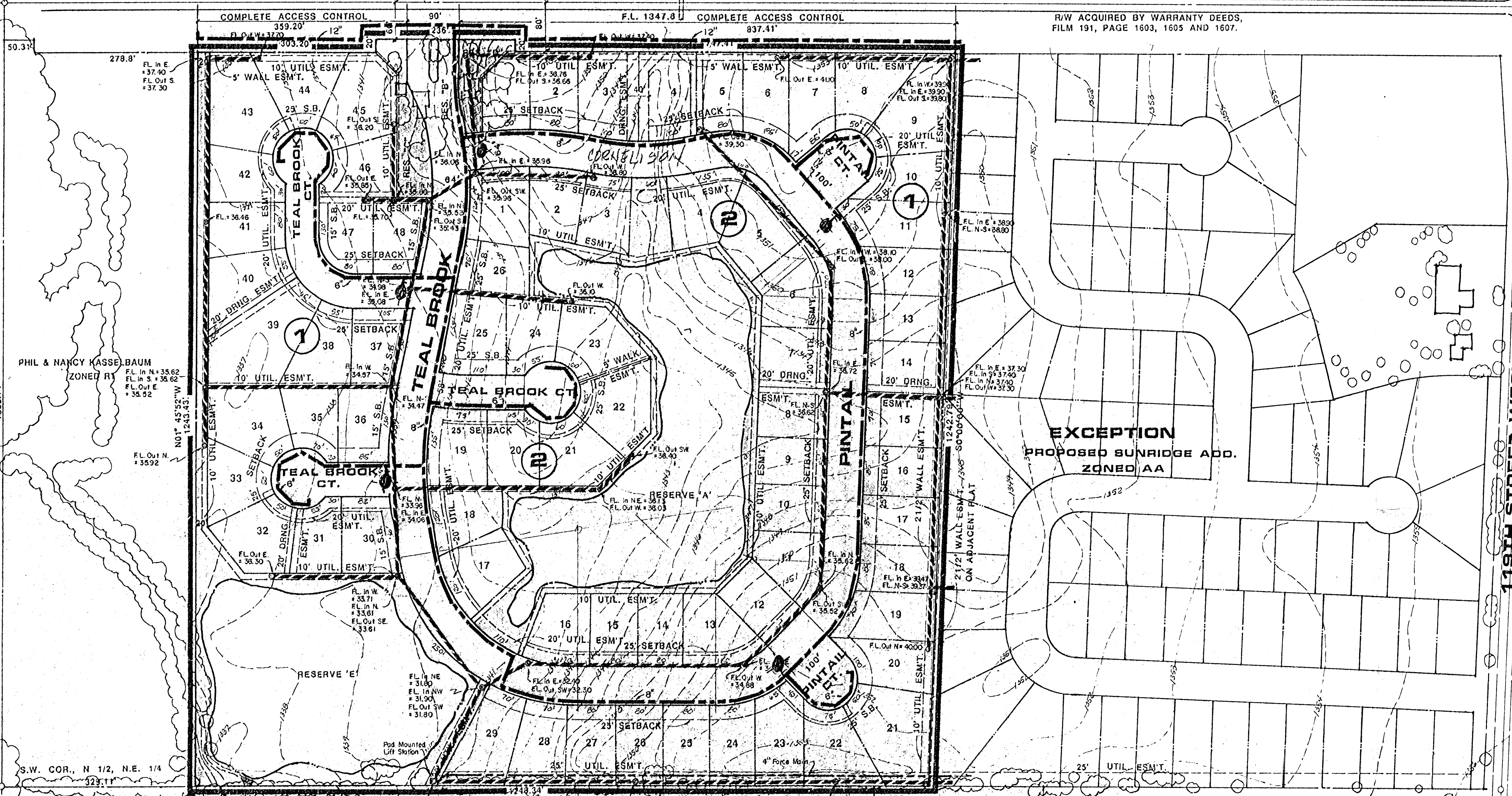
CEDAR CREST
DRIVE

CEDAR DOWNS
ZONED R1

N.W. COR., NE 1/4 12-27-2W

21ST STREET NORTH 17'X3' RCB N88°01'40"E 2593.15'

NE COR., NE 1/4 SEC. 12,
T27S, R2W



R/W ACQUIRED BY WARRANTY DEEDS,
FILM 191, PAGE 1603, 1605 AND 1607.

EXCEPTION
PROPOSED SUNRIDGE ADD.
ZONED AA

- - - - - Proposed San. Sewer
- - - - - Proposed Water Main
- - - - - Proposed Force Main

*Ben Negen
Dr Moehring
263-8291
Final Hdr. Layout
Save*



PRELIMINARY PLAT

TEAL BROOK ESTATES

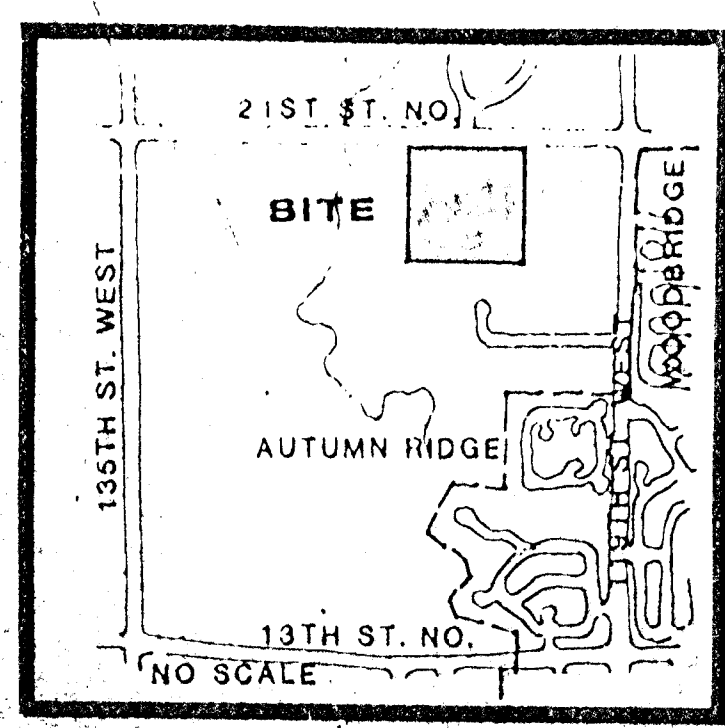
OWNER: JERRICK CORPORATION, 224 E. DOUGLAS, SUITE 200, WICHITA, KS. 67202 PH. 268-2727

WATER & SEWER PLAN

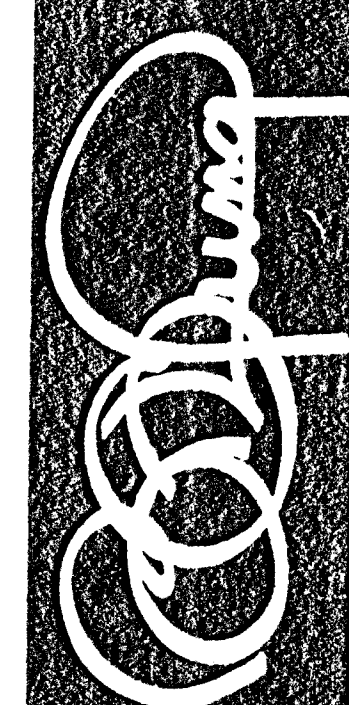
MOEHRING & ASSOCIATES CONSULTING ENGINEERS

NOTES

- DRAINAGE CONCEPT PLAN TO BE PREPARED BY MOEHRING & ASSOCIATES.
- BENCHMARK: CITY DISC 79' S. & 46' E. OF THIMBLE (N.E. COR. SEC. 12)
ELEV. 1359.48 MSL 172.08 CITY DATUM
- RESERVES A&E ARE FOR LAKES, DRAINAGE, WALKS, LANDSCAPING, IRRIGATION, GAZEBOS, AND UTILITIES CONFINED TO ESM'TS. RESERVE E IS ALSO FOR CONST. OF SAN. LIFT STATION.
- RESERVES B,C&D ARE FOR LANDSCAPING, IRRIGATION, ENTRY MONUMENTS AND UTILITIES CONFINED TO ESM'TS.



LOCATION MAP



BILL G. YUNG DESIGN
4912 E. 29TH STREET NORTH, WICHITA, KS 67220
316-683-5567

date JULY 7, 1988
rev.

sheet title PRELIMINARY PLAT

project TEAL BROOK ESTATES

sheet of