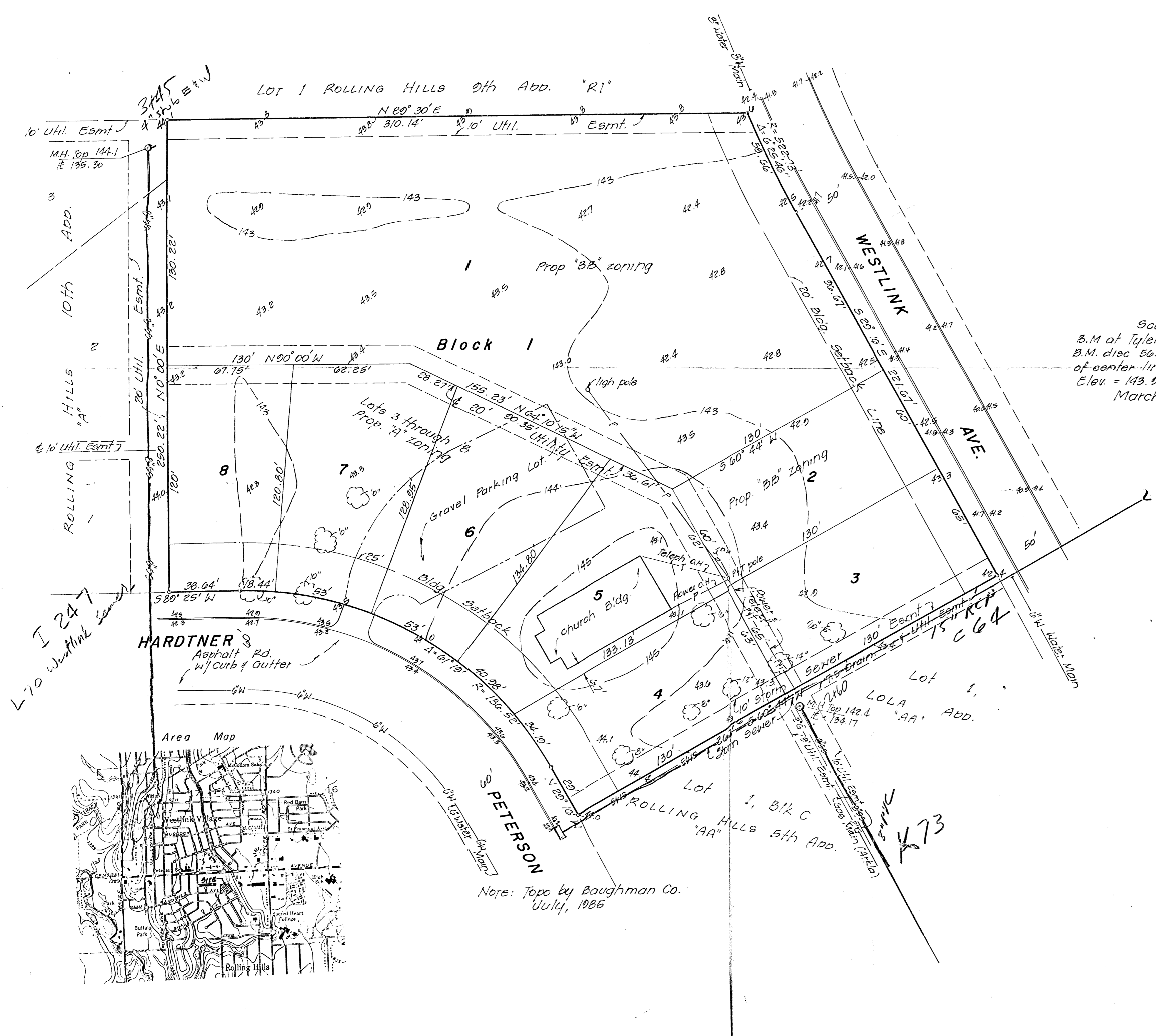


# PRELIMINARY PLAT OF THUNDERBIRD 6TH ADDITION

**CONTRACT PURCHASER:**  
Thunderbird Realty Service, Inc.  
c/o Dave Entriken  
6700 W. Central No. 104  
Wichita, Ks. 67212

**ENGINEER:**  
Professional Engineering Consultants p.a.  
1440 English  
Wichita, Ks. 67211



Scale 1" = 30'  
B.M. at Tyler Rd & Central  
B.M. disc 56.2' N. & 38' W  
of center line of both.  
Elev. = 143.003 City Datum  
March 1989

Note: Topo by Baughman Co.  
July, 1985