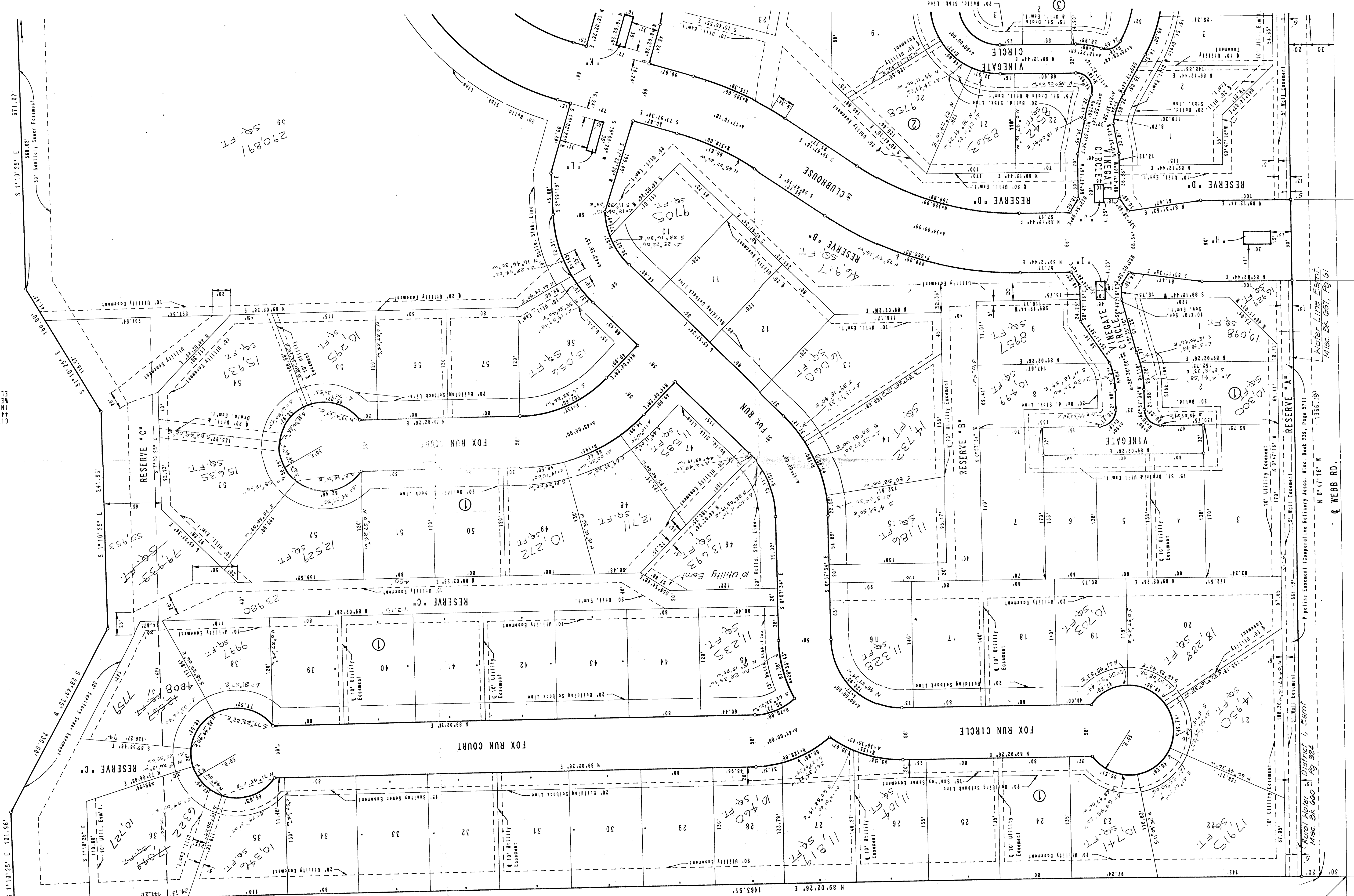


TALLGRASS EAST
TO WICHITA, SEDGWICK COUNTY, KANSAS



SCALE: 1"=50'
CITY OF WICHITA B. M. DISC
INTERSECTION OF CENTRALINE OF
WEBB RD. AND 21ST ST.
ELEV.=205.238 CITY DATUM
○ IRON SET

50' SQ.
FOOTAGE

Tallgrass East

COMPLETE ACCESS CONTROL

COMPLETE ACCESS CONTROL

Water Line Front
Misc. Bk. 657, P. 61

Water Meter District 1 East
Misc. Bk. 660 P. 94

MAN. COL. SW 1/4
SEC. 4, T27S, R2E
OF THE 6TH P.M.