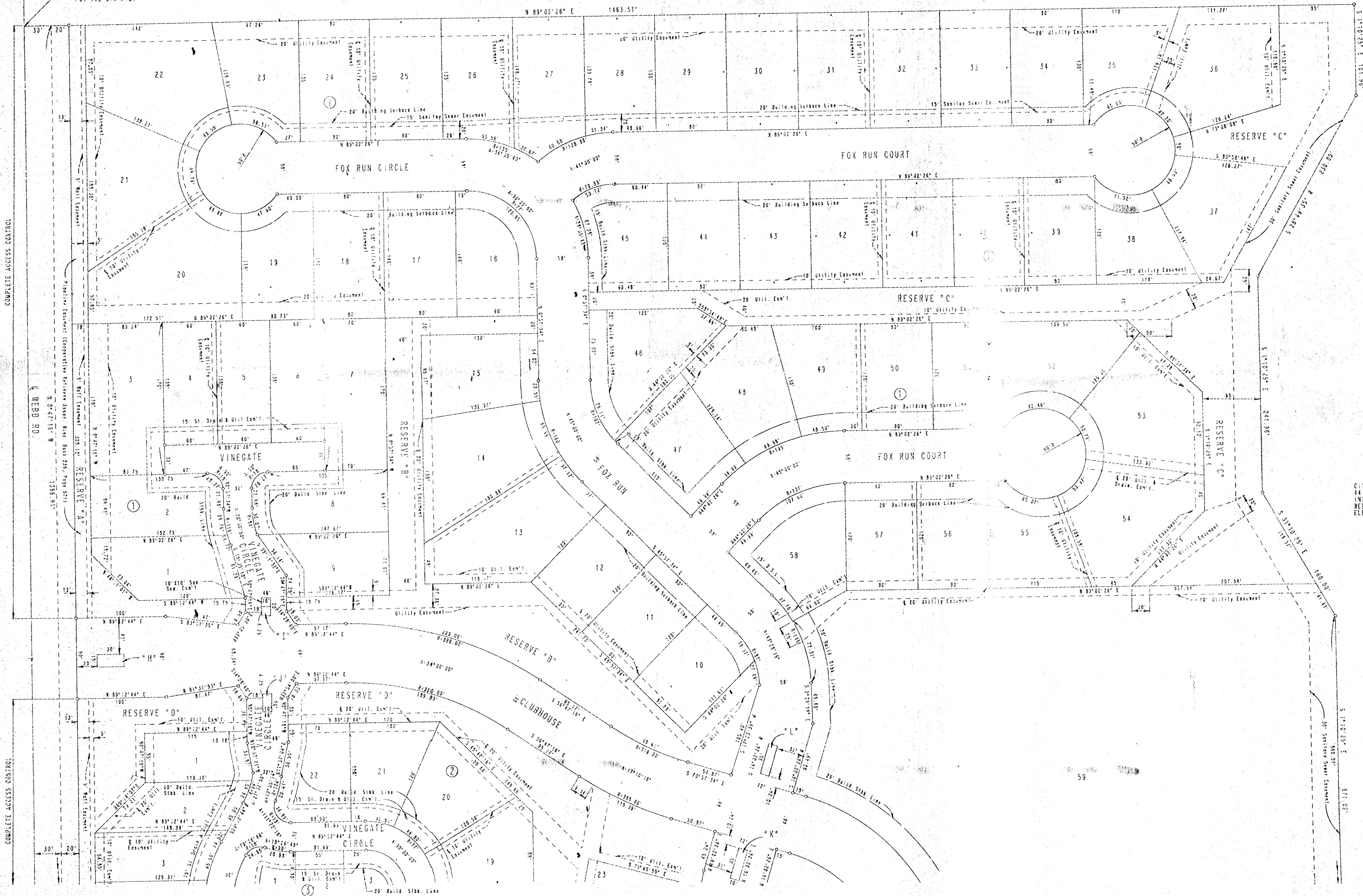


TALLGRASS EAST TO WICHITA, SEDGWICK COUNTY, KANSAS

NW Cor. SW 1/4
Sec. 4, T27S, R2E
of the 6th P.M.



COMPLETE ACCESS CONTROL

COMPLETE ACCESS CONTROL

SCALE: 1"=50'

○ IRON SET

CITY OF WICHITA B.M. DISC
44 FT. SO. AND 48 FT. EAST OF
INTERSECTION OF CENTERLINE OF
WEBB RD. AND 21ST ST.
ELEV. +205.238 CITY DATUM