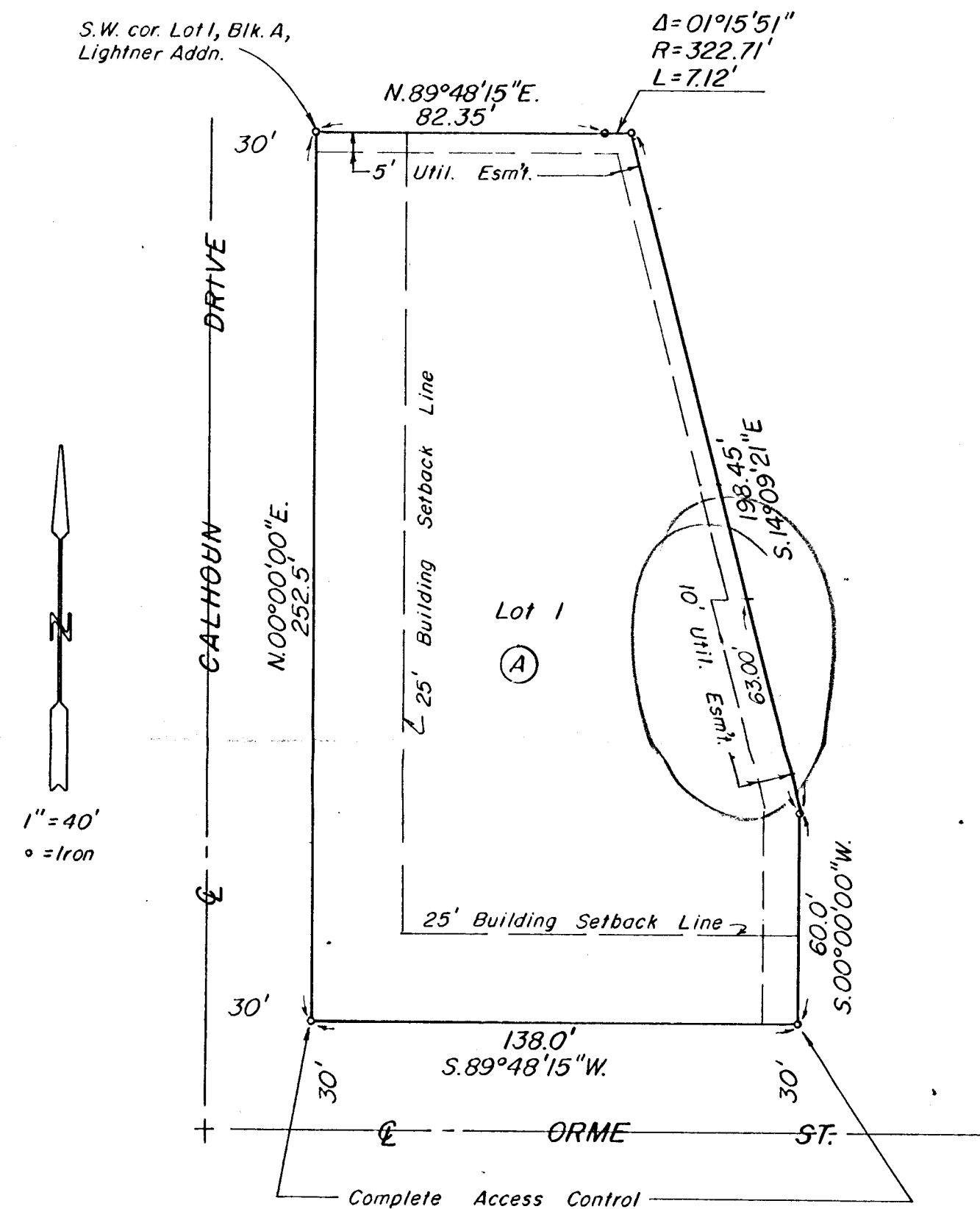


ROBERT LIGHTNER ADDITION TO WICHITA, KANSAS

REVISED COPY



Know all men by these presents that we the undersigned, property owners of the land as above set forth in the Civil Engineer's Certificate, have caused the same to be surveyed and platted into Lots and a Block, to be known as "ROBERT LIGHTNER ADDITION" to Wichita, Sedgwick County, Kansas. Easements for the construction and maintenance of public utilities, as indicated on the accompanying plat, are hereby granted. All abutter's rights of access to and from Orme Street, over and across the South line of Lot 1, Block A, are hereby granted to the City of Wichita.

LIGHTNER HOTELS, INC.

Robert S. Lightner, Jr., President
Frank W. Hafer, Vice President

This plat of "ROBERT LIGHTNER ADDITION" has been submitted to and approved by the Wichita-Sedgwick County Metropolitan Area Planning Commission.

Dated this 10th day of January, 1985.

WICHITA-SEDGWICK COUNTY METROPOLITAN AREA PLANNING COMMISSION

Jay C. Wilson, Chairman
Robert A. Lakin, Secretary

This plat has been approved and all dedications shown hereon, if any, accepted by the City Commission of the City of Wichita, Kansas, this 19th day of February, 1985.

Robert G. Knight, Mayor
Donald C. Gistek, City Clerk

This plat has been approved and all dedications shown hereon, if any, accepted by the Board of Commissioners of Sedgwick County, Kansas this _____ day of _____, 1985.

_____, Chairman
 Donald E. Gragg
 _____, Commissioner
 Bernard A. Hentzen
 _____, Commissioner
 Tom Scott
 Attest: _____, County Clerk
 Don Wright

STATE OF KANSAS, COUNTY OF SEDGWICK, SS:

This is to certify that this instrument was filed for record in the Register of Deeds Office at _____, 1985.

_____, Register of Deeds
 Pat Kettler
 _____, Deputy
 Ed Resa

Entered on transfer record this _____ day of _____, 1985.
 _____, County Clerk
 Don Wright

STATE OF KANSAS, COUNTY OF SEDGWICK, SS:

I, Don C. Moehring II, a Civil Engineer in said State and County, do hereby certify that I have surveyed and platted, "ROBERT LIGHTNER ADDITION" to Wichita, Sedgwick County, Kansas, into Lots and a Block, the same being accurately set forth on the accompanying plat and described as a Replat of Lots 2, 3, 4 and 5, Block 1, Eastridge Eighth Addition to Wichita, Sedgwick County, Kansas. Portions of Public Utility Easements as indicated in Lots 2, 3, 4 and 5, Block 1, Eastridge Eighth Addition to Wichita, Sedgwick County, Kansas, and Also "Access Control" as granted by separate instrument and recorded at Film 341 Page 1266, are hereby vacated by virtue of KSA 12-512(b).

Don C. Moehring II
 Don C. Moehring II Consulting Engineer

STATE OF KANSAS, COUNTY OF SEDGWICK, SS:

Be it remembered that on this 30th day of January, 1985, before me, a Notary Public in and for said State and County, came Lightner Hotels, Inc. by Robert S. Lightner, Jr., President and Frank W. Hafer, Vice President, on behalf of the Corporation, to me personally known to be the same persons who executed the foregoing instrument of writing and duly acknowledged the execution of the same on behalf of and as the act and deed of said Corporation. In testimony whereof I have hereunto set my hand and affixed my notarial seal the day and year above written.

Renate H. Thorpe, Notary Public
 Renate Thorpe

My Commission Expires 2/27/88

RENATE H. THORPE
 NOTARY PUBLIC
 Sedgwick County, Kansas

