

# LINDSAY'S ORCHARD ADDITION

WICHITA, SEDGWICK COUNTY, KANSAS

State of Kansas) SS  
Sedgwick County)

We, Savoy, Ruggles & Bohm, P.A., Surveyors in aforesaid county and state do hereby certify that, under the supervision of the undersigned, we have surveyed and platted "LINDSAY'S ORCHARD ADDITION", Wichita, Sedgwick County, Kansas and that the accompanying plat is a true and correct exhibit of the property surveyed, described as follows:

That part of the NE1/4 of the SE1/4 of Sec 31, Twp. 27-S, R-1-W of the 6th P.M., Sedgwick County, Kansas, except the north 115 feet thereof and except the north 215 feet of the south 375 feet of the west 365 feet of the NE1/4 of the SE1/4 of said Sec. 31.

All Public easements and dedications being vacated by virtue of K.S.A. 12-512(b).

Savoy, Ruggles & Bohm, P.A.

Date 19 JAN 1998



Mark A. Savoy RLS #788  
Surveyor

Know all men by these presents that we, the undersigned have caused the land described in the surveyor's certificate to be platted into Lots, Blocks, Reserves and Streets to be known as "LINDSAY'S ORCHARD ADDITION", Wichita, Sedgwick County Kansas. The utility easements are hereby granted as indicated for the construction and maintenance of all public utilities. The Streets are hereby dedicated to and for the use of the public. Access Controls are hereby granted to the City of Wichita (as indicated on the face of the plat), with the location of openings to be approved by the City Engineer. Minimum building pad elevations for lowest opening to a structure shall be as shown on the face of the plat.

Rick Thompson Construction Inc.

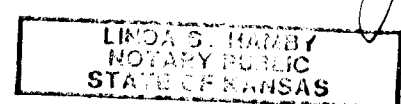
Rick Thompson  
President

State of Kansas) SS  
Sedgwick County)

The foregoing instrument acknowledged before me, this 19<sup>th</sup> day of January, 1998, by Rick Thompson, President, Rick Thompson Construction Inc.

Linda S. Hamby  
Notary Public

My App't. Exp. 10-30-99



This plat of "LINDSAY'S ORCHARD ADDITION", Wichita, Sedgwick County, Kansas, has been submitted to and approved by the Wichita-Sedgwick County Metropolitan Area Planning Commission, Wichita, Kansas. Dated this \_\_\_ day of \_\_\_, 1997.

Wichita-Sedgwick County Metropolitan Area Planning Commission

Chairman  
John C. Frye

Secretary  
Marvin S. Krout

Mayor  
Bob Knight

City Clerk  
Pat Burnett

This plat approved and all dedications shown hereon, accepted by the City Council of the City of Wichita, Kansas, this \_\_\_ day of \_\_\_, 1998.

County Clerk  
James Alford

Entered on transfer record this \_\_\_ day of \_\_\_, 1998.

State of Kansas) SS  
Sedgwick County)

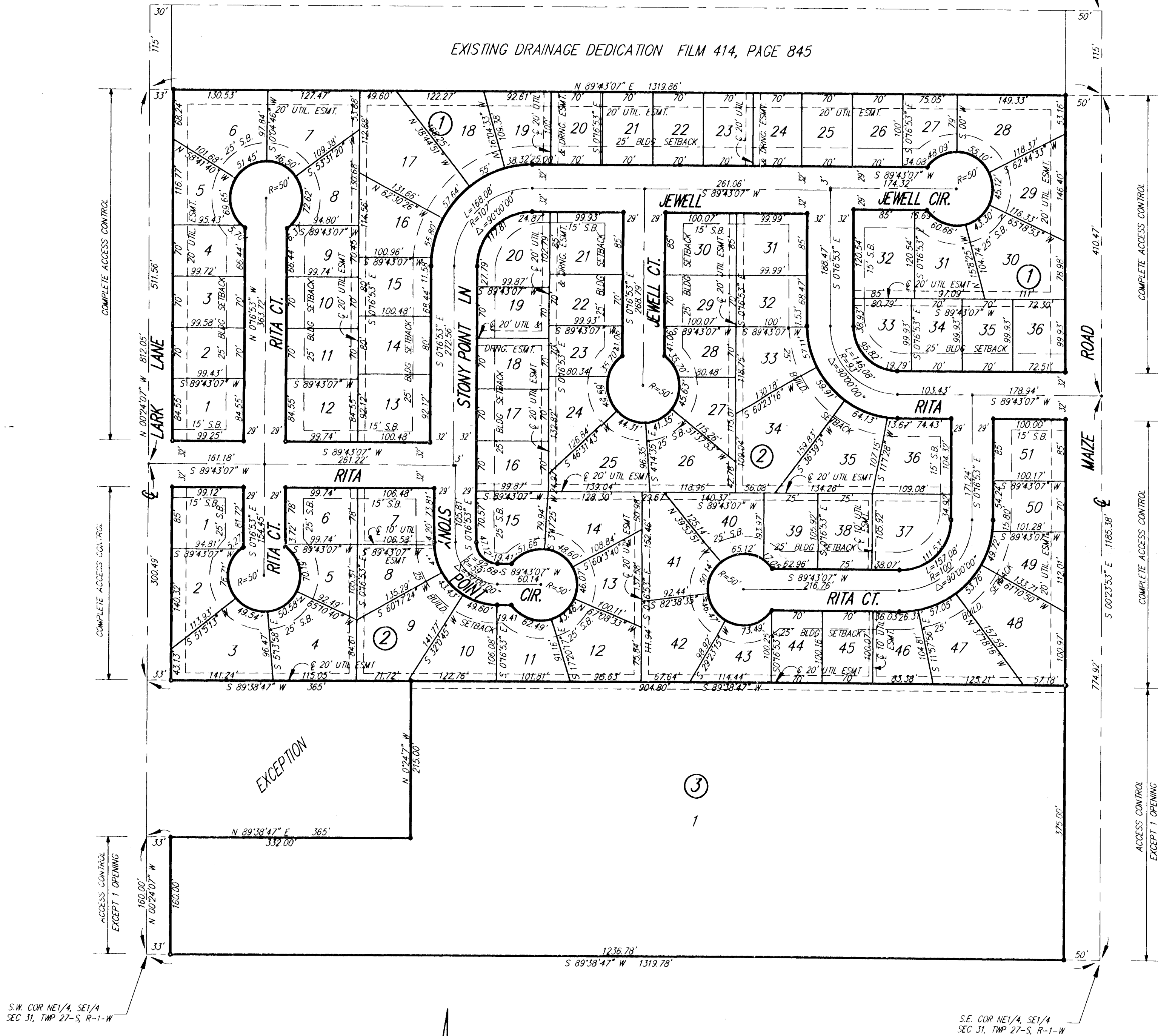
This is to certify that this plat has been filed for record in the office of the Register of Deeds, this \_\_\_ day of \_\_\_, 1998, at \_\_\_ o'clock \_\_\_ M. and is duly recorded.

Register of Deeds  
Larry Consolver

Deputy  
Michael D. Hurtt

N.W. COR. NE1/4, SE1/4  
SEC. 31, TWP. 27-S, R-1-W

N.E. COR. NE1/4, SE1/4  
SEC. 31, TWP. 27-S, R-1-W



EXISTING DRAINAGE DEDICATION FILM 414, PAGE 845

MINIMUM BUILDING PAD ELEVATION FOR LOWEST OPENING TO A STRUCTURE			
LOT	BLOCK	ELEVATION	
		CITY DATUM	M.G.V.D.
6, 7	2	1.38.5	1.325.9
17, 18, 19	2	1.38.0	1.325.4
20, 21, 22	2	1.37.5	1.324.9
23, 24, 25, 26	2	1.37.0	1.324.4
27, 28	2	1.36.5	1.323.9

BENCHMARK:  
City of Wichita Benchmark disc @ Maize Road and May Street  
31.5' S. and 38' E. of centerline both  
Elev.=137.67 (City Datum)  
Elev.=1325.07 (NGVD)

1" = 100'  
• = 1/2" REBAR W/SRB CAP

S.B. = BUILDING SETBACK  
C.A.C. = COMPLETE ACCESS CONTROL