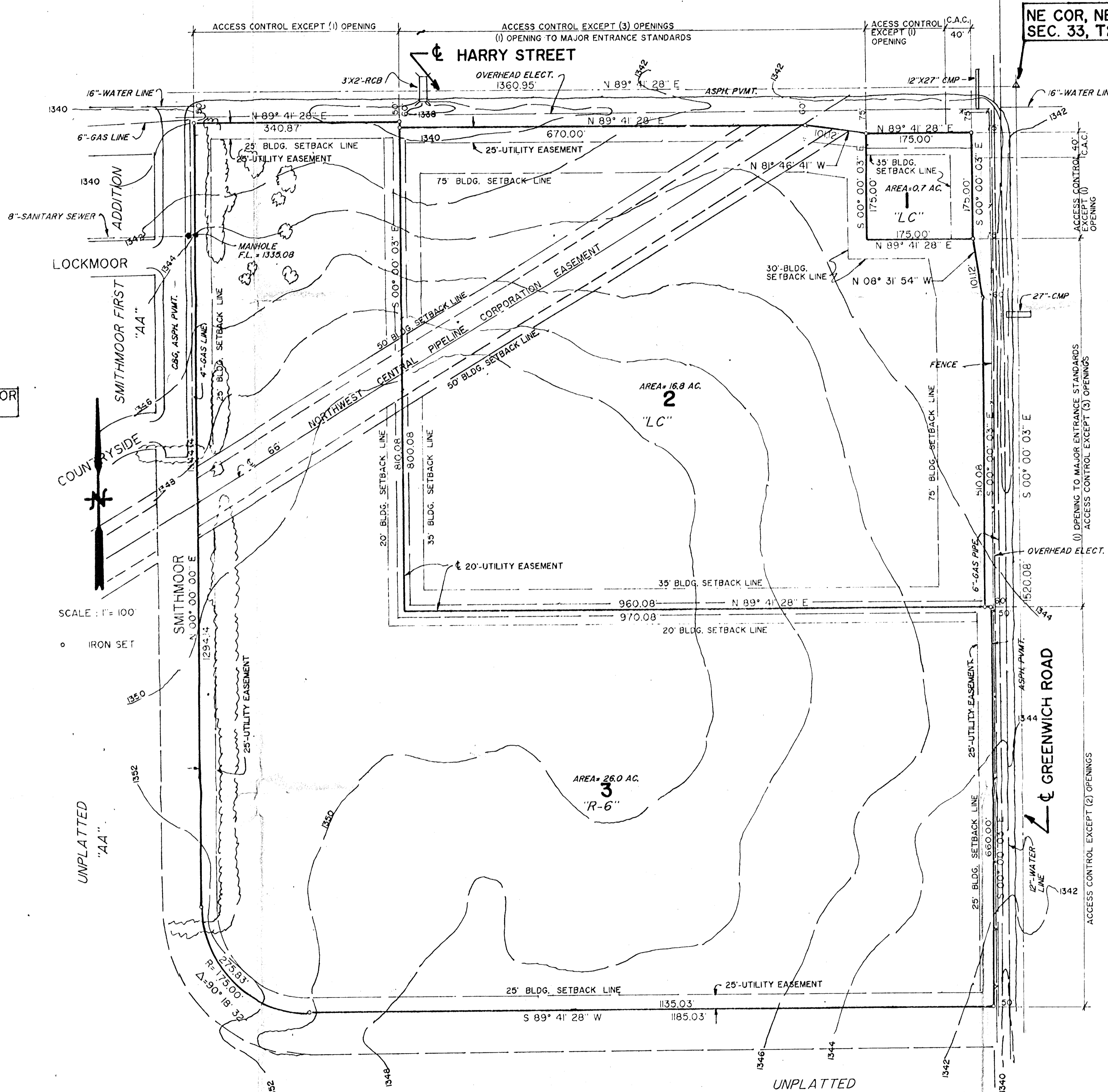


VICINITY MAP

SMITHMOOR ADDITION



NE COR, NE 1/4  
SEC. 33, T27S, R2E

**PROPERTY DESCRIPTION:**

BEGINNING AT THE NORTHEAST CORNER OF SECTION 33, TOWNSHIP 27 SOUTH, RANGE 2 EAST OF THE 6TH P.M., SEDGWICK COUNTY, KANSAS; THENCE BEARING S 00° 00' 03" E, ALONG THE EAST LINE OF SAID SECTION 33, A DISTANCE OF 1520.08 FEET; THENCE BEARING S 89° 41' 28" W, PARALLEL WITH THE NORTH LINE OF SAID SECTION 33, A DISTANCE OF 1185.03 FEET TO THE P.C. OF A CURVE TO THE RIGHT HAVING A RADIUS OF 175.00 FEET; THENCE ALONG SAID CURVE THROUGH A CENTRAL ANGLE OF 90° 18' 32", AN ARC DISTANCE OF 275.83 FEET; THENCE BEARING N 00° 00' 00" E, ALONG THE EAST LINE OF SMITHMOOR FIRST ADDITION, WICHITA, SEDGWICK COUNTY, KANSAS, EXTENDED SOUTH, A DISTANCE OF 1344.14 FEET TO A POINT IN THE NORTH LINE OF SAID SECTION 33; THENCE BEARING N 89° 41' 28" E ALONG SAID NORTH LINE, A DISTANCE OF 1360.95 FEET TO THE POINT OF BEGINNING

**OWNER:**

SMITH & CO., INC.  
P.O. BOX 780535  
WICHITA, KANSAS 67278

GROSS AREA = 47.3 AC.  
NET AREA = 43.5 AC. (Exclusive of Public Street R/W)

SCALE: 1" = 100'

○ IRON SET

UNPLATTED "AA"

UNPLATTED "AA"

**PRELIMINARY PLAT  
SMITHMOOR ADDITION  
WICHITA, SEDGWICK COUNTY, KANSAS**

BENCH MARK: NW COR, N HDW. RCB,  
800' EAST OF NW COR, NE 1/4, SECTION  
33-27-2E; ELEV. = 1339.47

TOPOGRAPHIC SURVEY FURNISHED BY OWNER

**MUNICIPAL ENGINEERS**  
Civil Engineers & Land Surveyors  
254 Laura, Suite 201  
Wichita, Kansas 67211

BABAR M. KHAN, P.E., R.L.S.