

SCALE IN FEET
SCALE: 1"=100'

SILVER SPRINGS

C.U.P. No. DP-26

AN ADDITION TO THE CITY OF WICHITA, BEING A SUBDIVISION OF A PART OF THE SW/4 OF SECTION 15, T-27-S, R-1-W, SEDGWICK COUNTY, KANSAS.

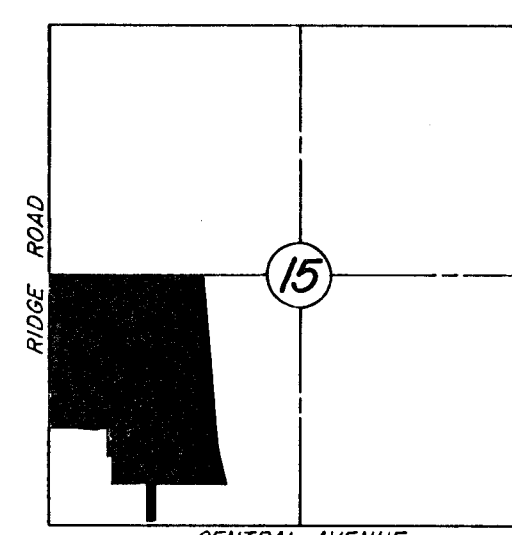
OWNER:

FLOYD R. HARDESTY
4606 SOUTH GARNETT ROAD
PHONE: (918) 622-3600
TULSA, OKLAHOMA

ENGINEER:

TULSA ENGINEERING & PLANNING ASSOCIATES, INC.
8209 EAST 63rd PLACE SOUTH
PHONE: (918) 252-9621
TULSA, OKLAHOMA 74133

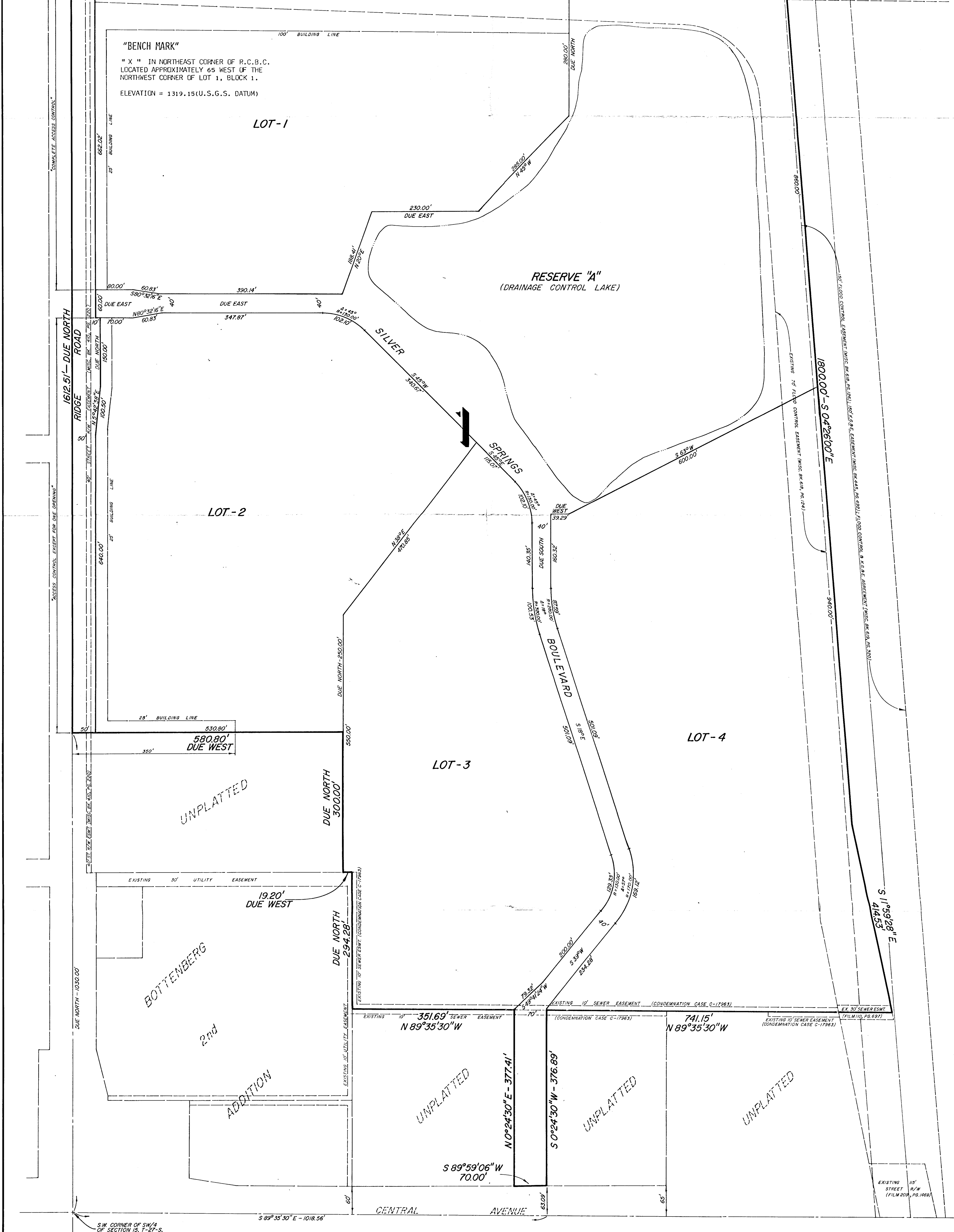
R-1-W



T
27
S

LOCATION MAP
74.81 ACRES

NW CORNER OF SW/4 OF SECTION 15, T-27-S, R-1-W



"BENCH MARK"
"X" IN NORTHEAST CORNER OF R.C.B.C.
LOCATED APPROXIMATELY 65 WEST OF THE
NORTHWEST CORNER OF LOT 1, BLOCK 1.
ELEVATION = 1319.15 (U.S.G.S. DATUM)

LOT-1

RESERVE "A"
(DRAINAGE CONTROL LAKE)

LOT-2

LOT-3

LOT-4

UNPLATTED

UNPLATTED

UNPLATTED

UNPLATTED

BOTTENBERG

ADDITION

CENTRAL AVENUE

SW CORNER OF SW/4 OF SECTION 15, T-27-S, R-1-W