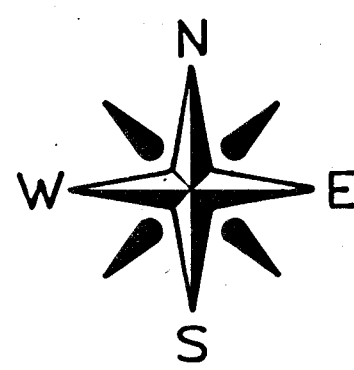


PRELIMINARY PLAT OF  
**SILVER SPRINGS**

"AN ADDITION TO THE CITY OF WICHITA, SEDGWICK COUNTY, KANSAS"  
ZONED R-6



SCALE: 1"=100'  
FEB 6, '81

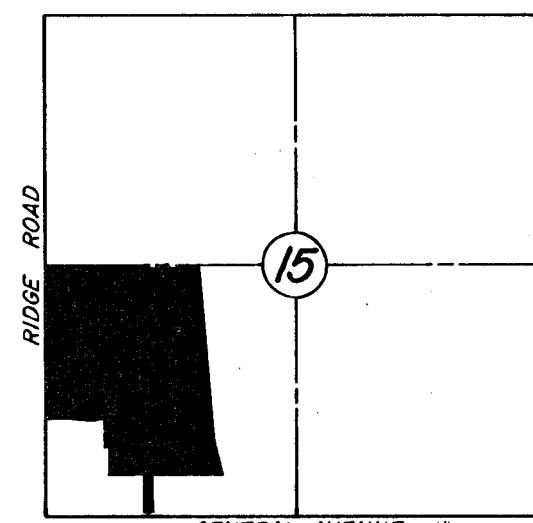
OWNER:

FLOYD R. HARDESTY  
4606 SOUTH GARNETT ROAD  
PHONE: (918) 622-3600  
TULSA, OKLAHOMA

ENGINEER:

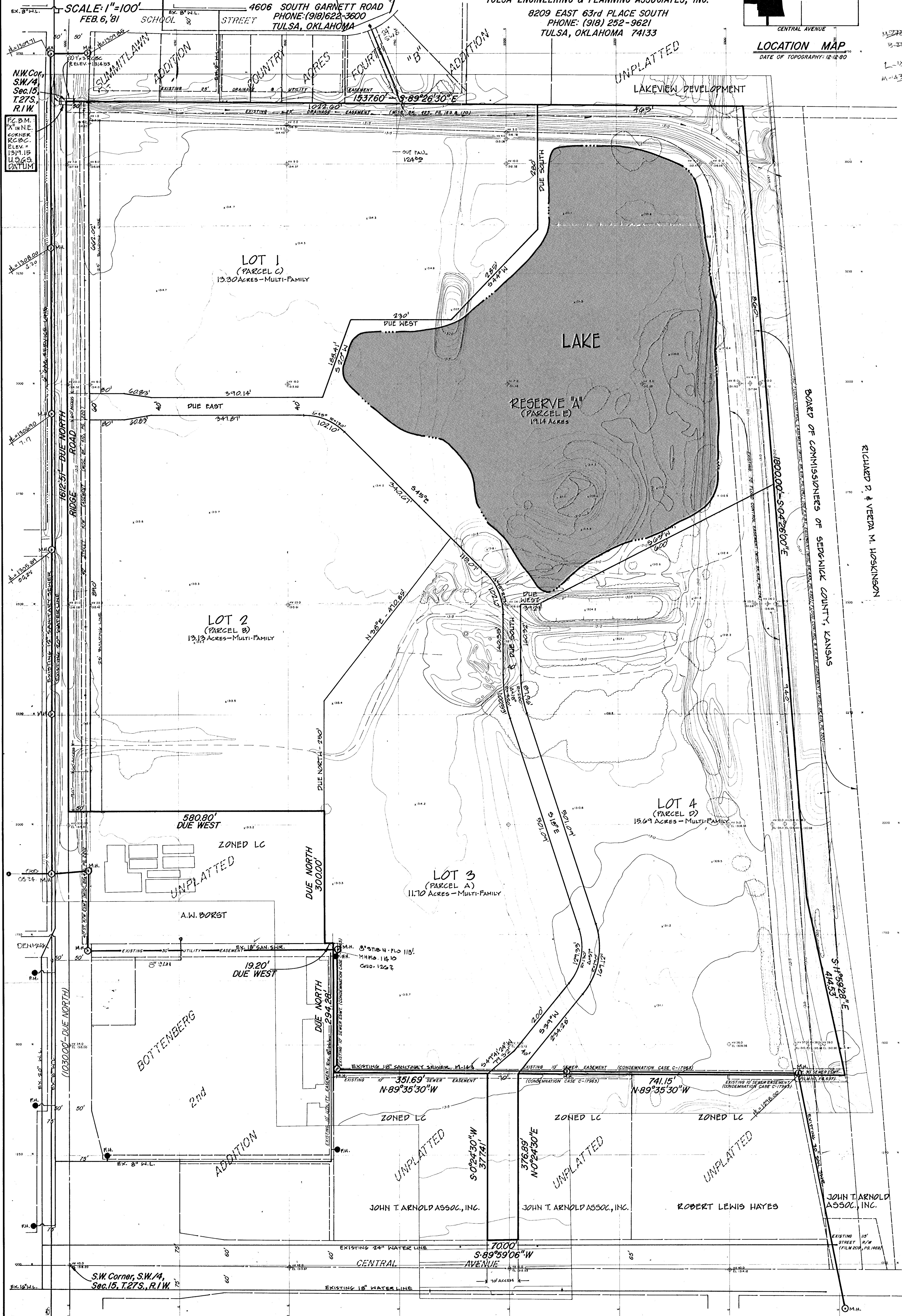
TULSA ENGINEERING & PLANNING ASSOCIATES, INC.  
8209 EAST 63rd PLACE SOUTH  
PHONE: (918) 252-9621  
TULSA, OKLAHOMA 74133

R-1-W



T  
27  
S

LOCATION MAP  
DATE OF TOPOGRAPHY: 12-18-80



BOARD OF COMMISSIONERS OF SEDGWICK COUNTY, KANSAS

RICHARD P. & VERDA M. HOSKINSON

N.W. Corner, S.W. 1/4, Sec. 15, T.27S, R.1W

S.W. Corner, S.W. 1/4, Sec. 15, T.27S, R.1W

DENMARK

EX. 12 1/2\"/>

EX. 12 1/2\"/>