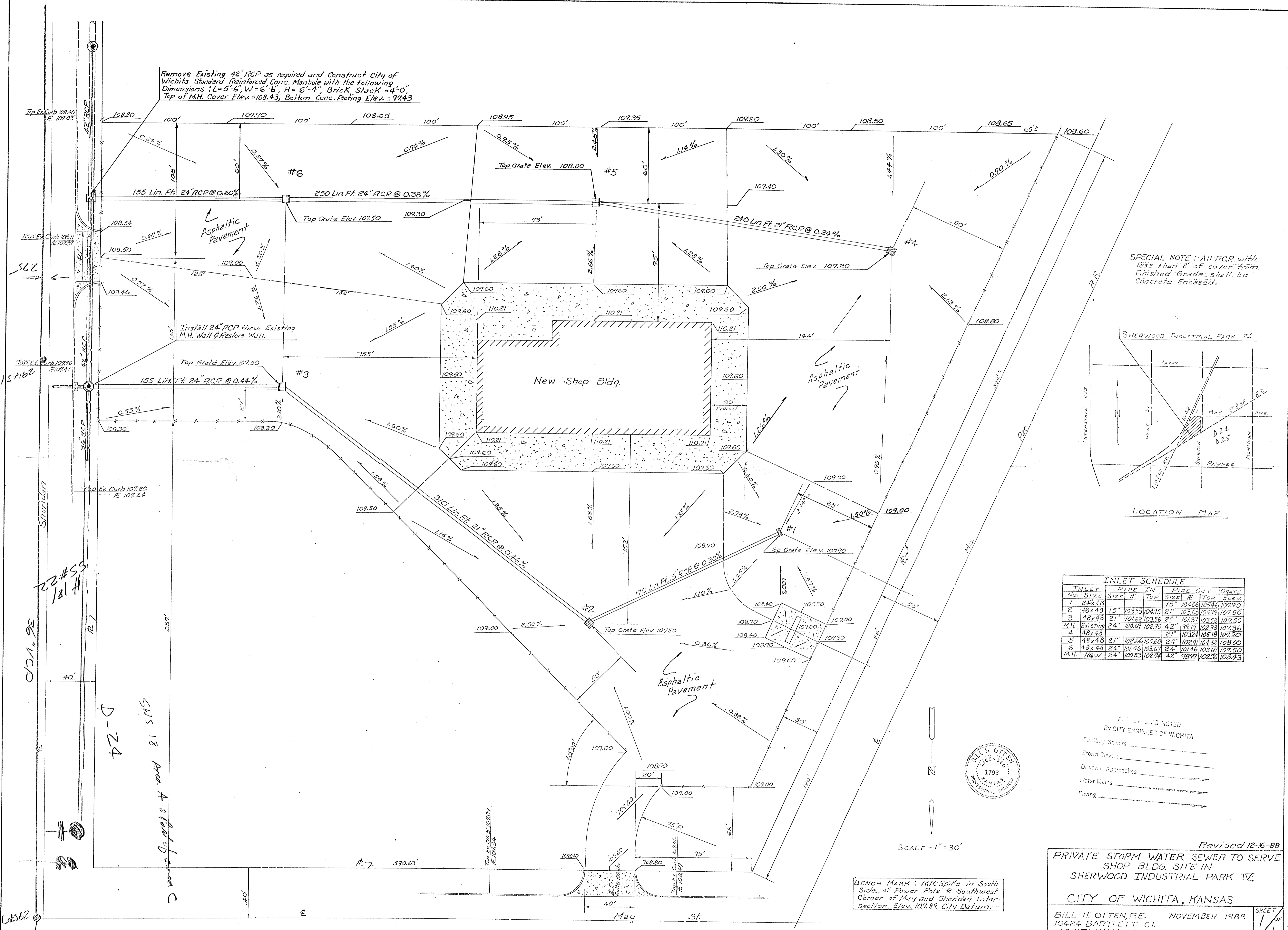
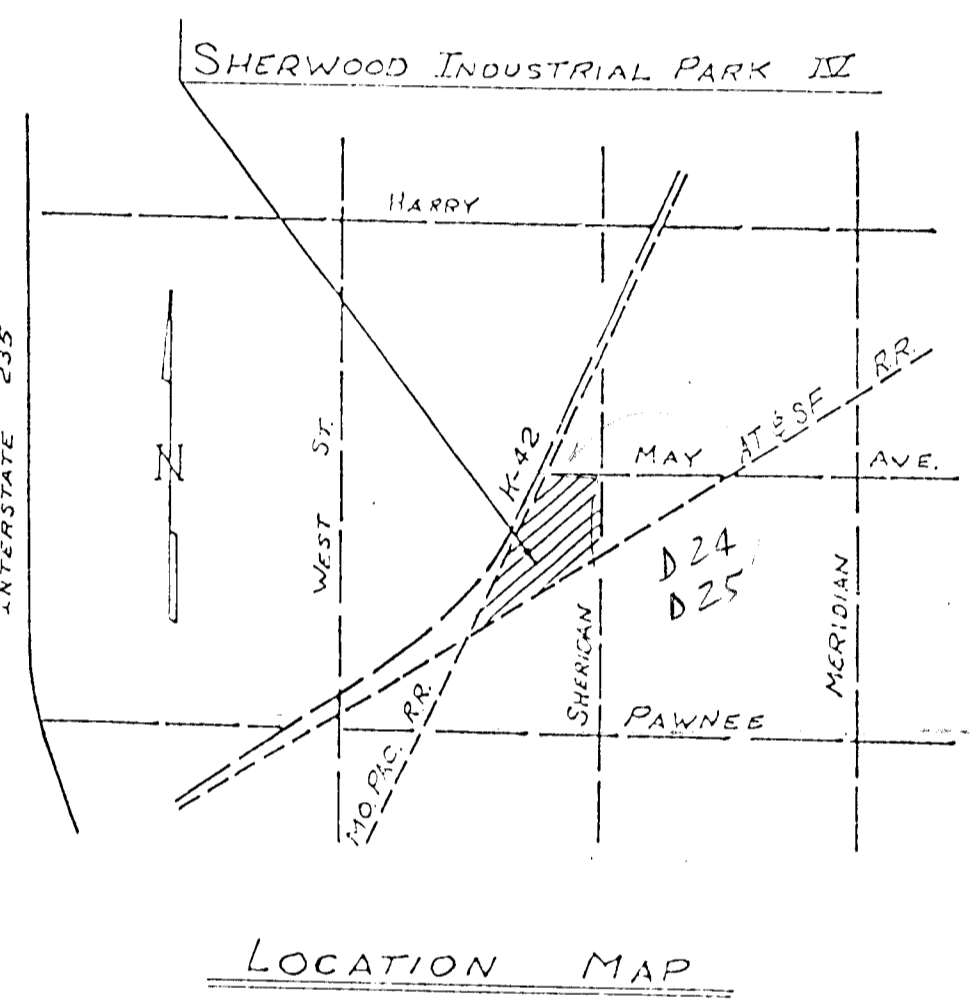


Remove Existing 42" RCP as required and Construct City of Wichita Standard Reinforced Conc. Manhole with the following Dimensions: L=5'-6", W=6'-6", H=6'-4", Brick Stack=4'-0", Top of M.H. Cover Elev.=108.43, Bottom Conc. Footing Elev.=97.43



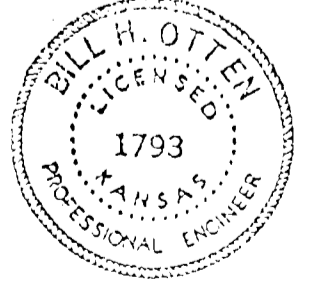
SPECIAL NOTE: All RCP with less than 2' of cover from Finished Grade shall be Concrete Encased.



| INLET SCHEDULE | | | | |
|----------------|-----------|----------------|-----------------|-----------------|
| INLET No. | PIPE SIZE | PIPE IN SIZE # | PIPE OUT SIZE # | GRATE TOP Elev. |
| 1 | 24x48 | 15" | 15" | 104.06 |
| 2 | 48x48 | 15" | 21" | 103.05 |
| 3 | 48x48 | 21" | 24" | 101.37 |
| M.H. Existing | 24" | 100.69 | 42" | 99.19 |
| 4 | 48x48 | 21" | 21" | 103.24 |
| 5 | 48x48 | 21" | 24" | 102.64 |
| 6 | 48x48 | 24" | 24" | 101.46 |
| M.H. New | 24" | 100.53 | 42" | 98.91 |

As Shown and NOTED
By CITY ENGINEER OF WICHITA

Sanitary Sewers _____
Storm Sewers _____
Driveway Approaches _____
Water Mains _____
Flowing _____



BENCH MARK: R.R. Spike in South Side of Power Pole @ Southwest Corner of May and Sheridan Inter-section. Elev. 107.89 City Datum.

Revised 12-16-88
PRIVATE STORM WATER SEWER TO SERVE SHOP BLDG. SITE IN SHERWOOD INDUSTRIAL PARK IV
CITY OF WICHITA, KANSAS
BILL H. OTTEN, P.E. NOVEMBER 1988
10424 BARTLETT CT
WICHITA, KANSAS 67212 721-3638

22#55
131#1

SMS 18 Area A & Part of Area C
D-24

104562

SHEET 1 OF 1