

PRELIMINARY PLAT OF

THE SHOPS AT TALLGRASS

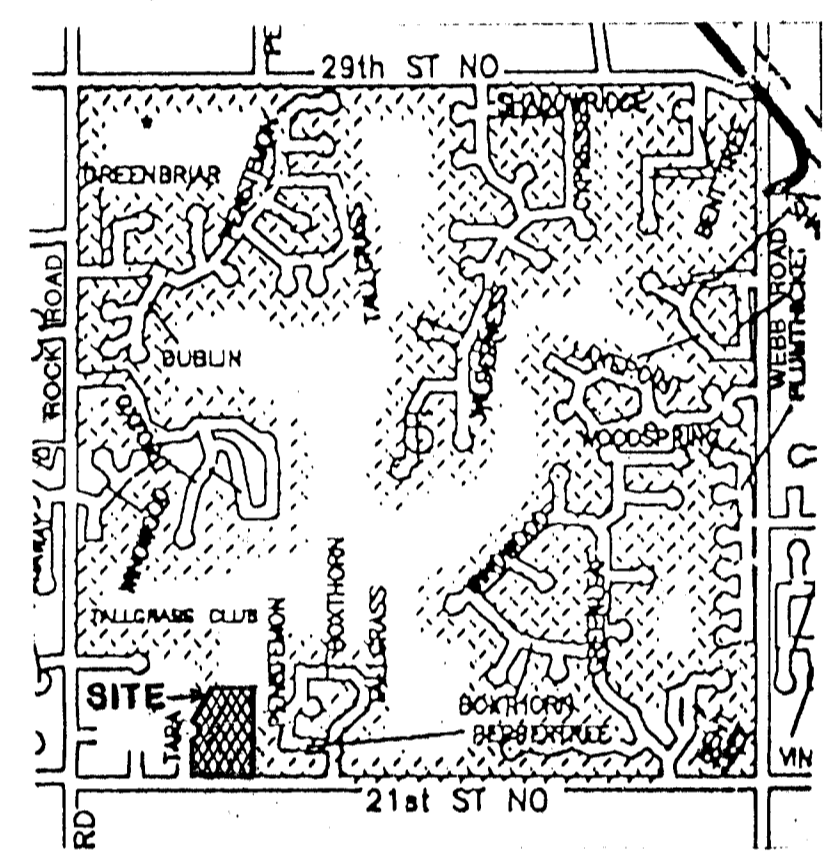
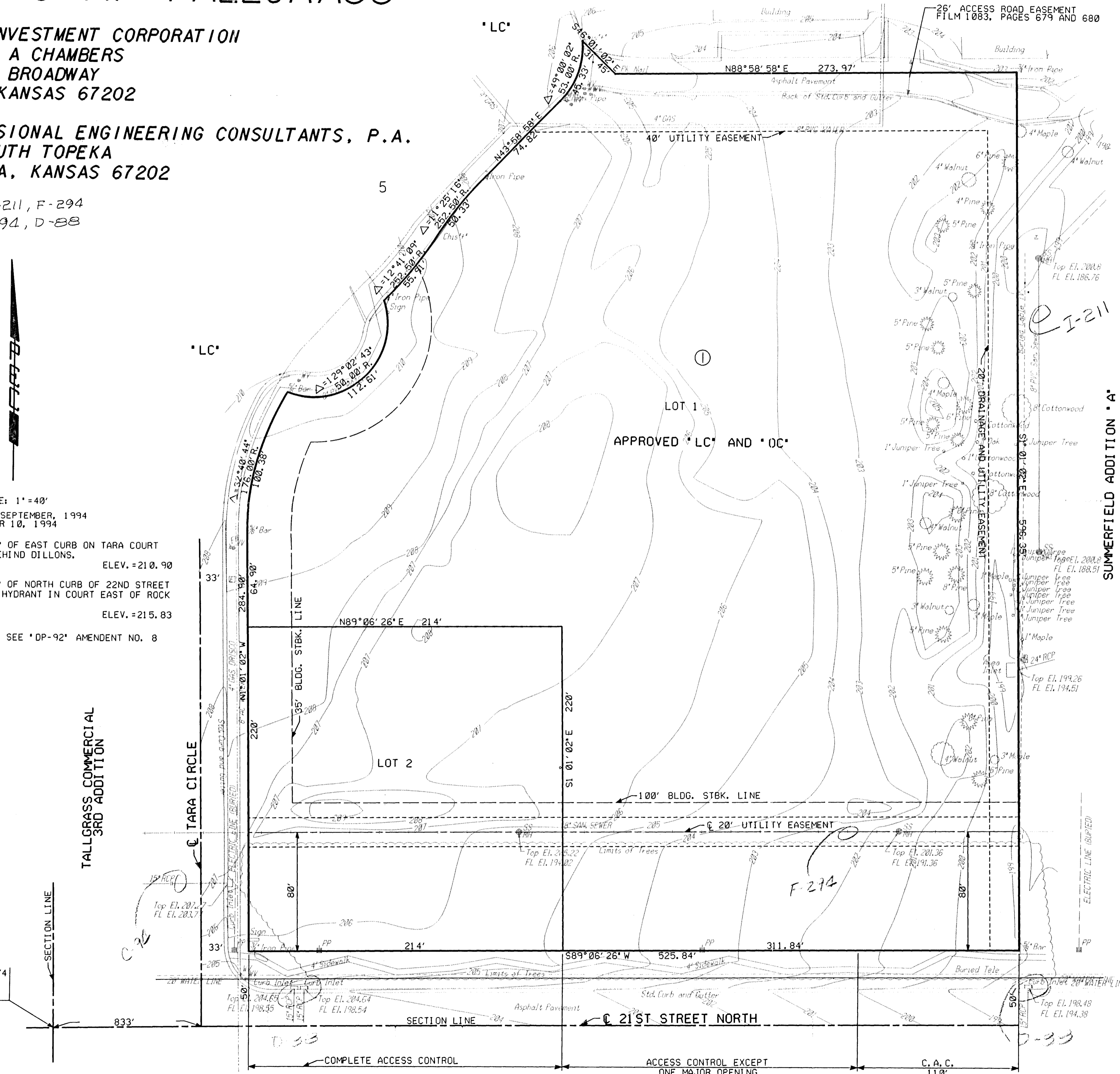
OWNER: SLAWSON INVESTMENT CORPORATION
c/o LARRY A CHAMBERS
104 SOUTH BROADWAY
WICHITA, KANSAS 67202

ENGINEER: PROFESSIONAL ENGINEERING CONSULTANTS, P.A.
303 SOUTH TOPEKA
WICHITA, KANSAS 67202

Sanitary Sewers: I-211, F-294
Storm Sewers: C-94, D-88

TALLGRASS COMMERCIAL
5TH ADDITION

13



AREA MAP

SCALE: 1" = 40'
TOPOGRAPHY SEPTEMBER, 1994
OCTOBER 10, 1994

- B. M. *1 - CHISELED 'Q' CUT ON TOP OF EAST CURB ON TARA COURT NORTH OF 21ST STREET BEHIND DILLONS. ELEV. = 210.90
 - B. M. *2 - CHISELED 'Q' CUT ON TOP OF NORTH CURB OF 22ND STREET NORTH IN FRONT OF FIRE HYDRANT IN COURT EAST OF ROCK ROAD. ELEV. = 215.83
- FOR ADDITIONAL SETBACKS SEE 'DP-92' AMENDMENT NO. 8

S.W. CORNER, S.W. 1/4
SEC. 5, T27S, R2E
OF THE 6TH P.M.

WILSON ESTATES *AA*