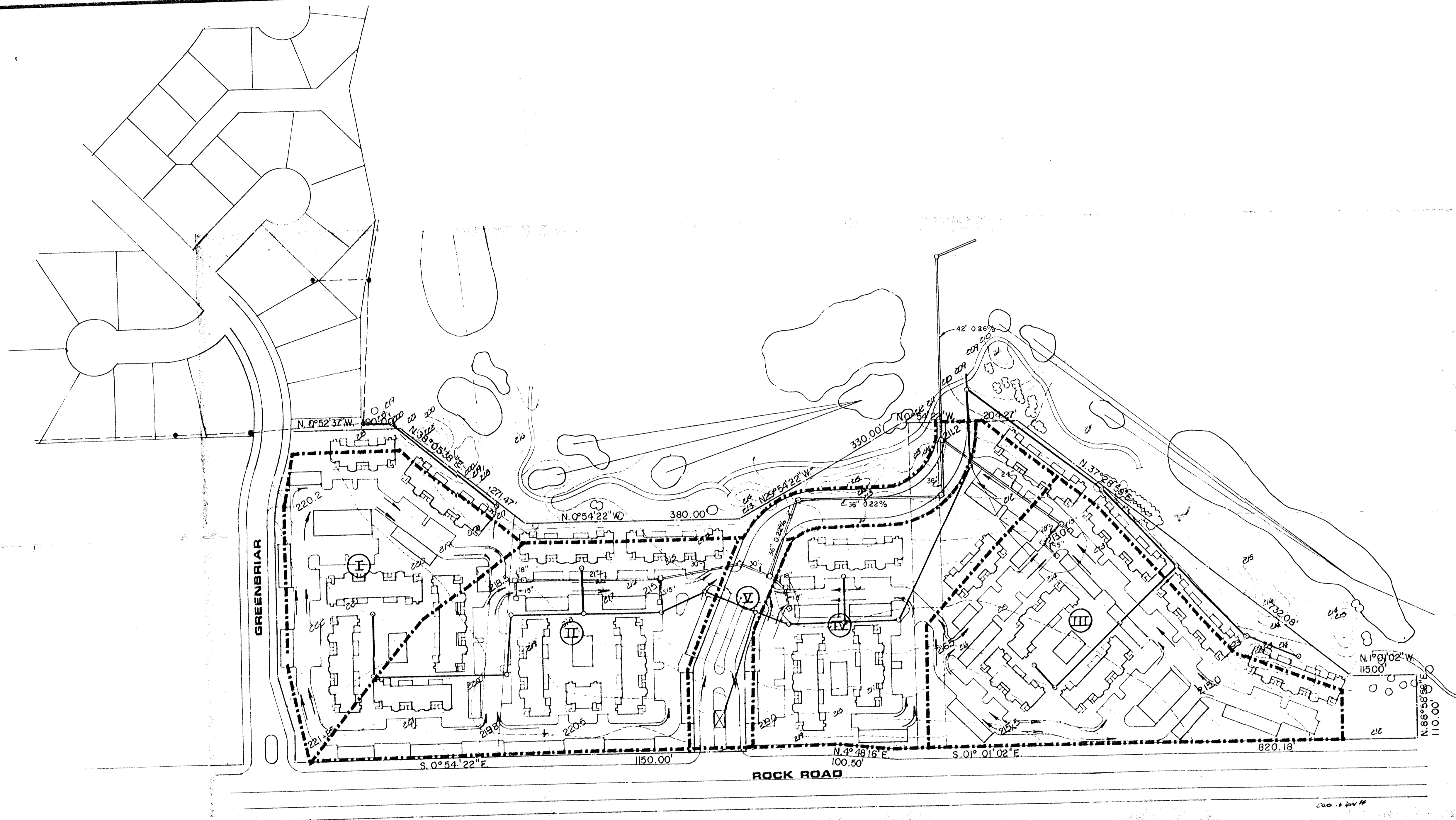


LEGEND

- = Proposed Storm Water Sewer
- = Proposed Sanitary Sewer
- = Flow Direction Arrow
- = Proposed Street Grade
- = Drainage Area Divides
- = Existing Sanitary Sewer



	AREA	AREA ACCUM.	C	T	I ₂	I ₁₀₀	Q ₂	Q ₁₀₀	CURB INLET	PIPE SIZE & SLOPE
I.	2.9		0.7	15	4.06	8.98	8.2	18.2	2	21" @ 0.44%
II.	4.6		0.7	15	4.06	8.98	13.1	28.9	3	
		7.5	0.7	17	3.86	8.55	20.3	44.9		30" @ 0.26%
III.	4.8		0.7	15	4.06	8.98	13.6	30.2	2	24" @ 0.40%
		4.6	0.7	15	4.06	8.98	9.9	22.0	2	18" @ 0.8%
V.	1.6		0.7	15	4.06	8.98	4.5	10.0		
		12.6	0.7	18	3.78	8.37	33.3	74.8		42" @ 0.36% (60 cfs)
		17.4	0.7	19	3.70	8.19	45.0	99.8		44" @ 0.32% (80 cfs)

NOTE: At the time of preliminary plan preparation, refinement of the proposed storm system sized and indicated here on will be done by computer analysis and submitted to the City Engineer.



DRAINAGE PLAN FOR SILVERLEAF

Design: KHB
 Drawn by: DLM
 Checked by: KHB
 Date: April, 1984
 Job no.

MID-KANSAS ENGINEERING CONSULTANTS PA
 240 NORTH ROCK ROAD
 SUITE 130
 WICHITA, KANSAS 67206

682-6561

Sheet 1 of 1