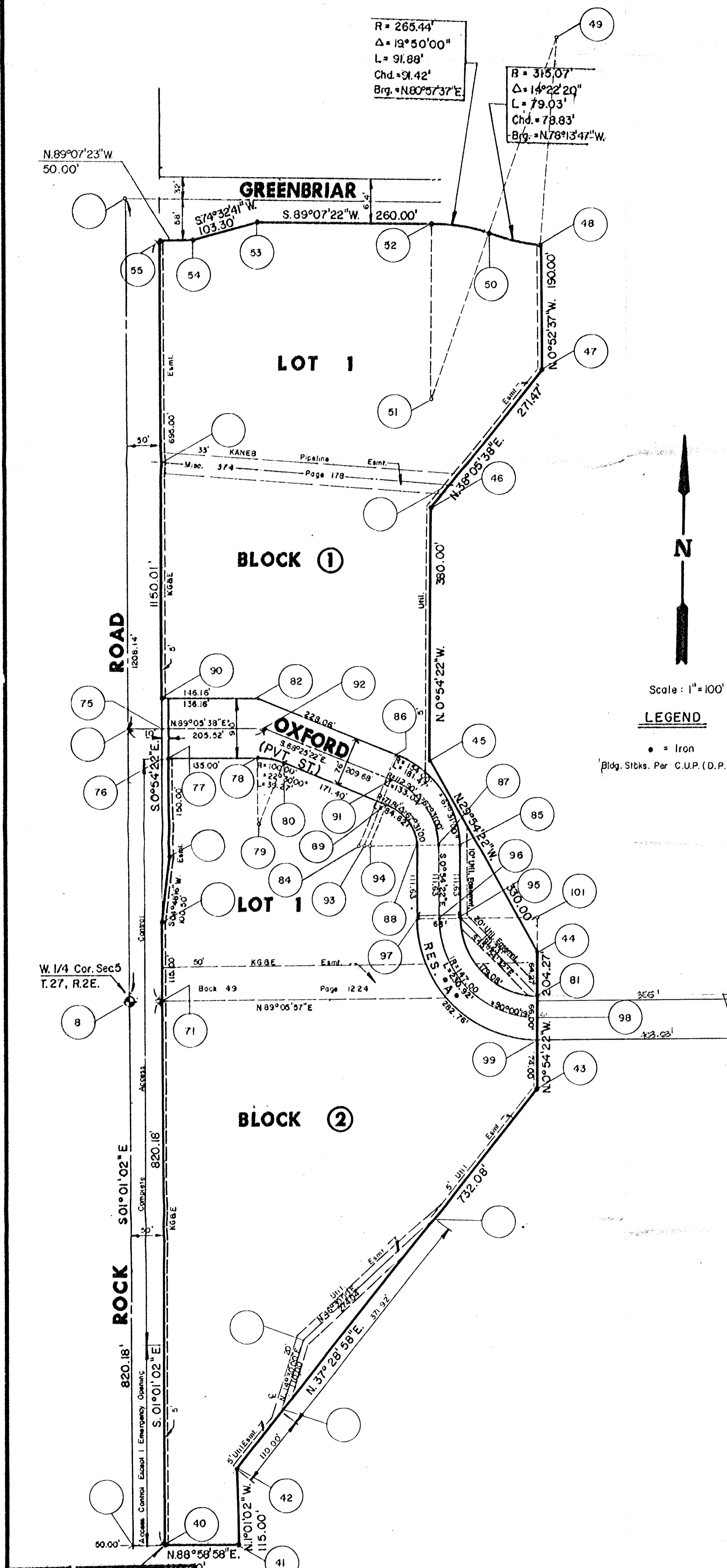


**FINAL PLAT OF
SILVERLEAF
AN ADDITION TO WICHITA, SEDGWICK COUNTY KANSAS**



I, Michael D. Harding, a Civil Engineer in Kansas, do hereby certify that I have been in responsible charge of surveying and platting of "Silverleaf", an addition to Wichita, Sedgwick County, Kansas, into Lots, Blocks and a Reserve, the same being accurately set forth in the accompanying plat and described as follows:

A tract of land in the west half of Section 5, Township 26 south, Range 2 east of the 6th P.M., more particularly described as follows:

Beginning at a point on the east right-of-way line of Rock Road, 820.18 feet S 1° 01' 02" E and 50.00 feet N 88° 58' 58" E from the west quarter corner of said Section 5; thence N 88° 58' 58" E, 110.00 feet; thence N 1° 01' 02" E, 115.00 feet; thence N 37° 28' 58" E, 732.08 feet; thence N 0° 54' 22" W, 204.27 feet; thence N 29° 54' 22" W, 380.00 feet; thence N 0° 54' 22" W, 380.00 feet; thence N 38° 05' 38" E, 271.47 feet; thence N 0° 52' 37" W, 190.00 feet to a point on a curve to the right having a radius of 315.07 feet, a central angle of 14° 22' 20" and a long chord bearing N 78° 13' 47" W, 78.83 feet; thence along said curve 79.03 feet to the beginning of a curve to the left having a radius of 265.44 feet, a central angle of 19° 50' 00" and a long chord bearing N 80° 57' 37" E, 91.42 feet; thence along said curve 91.88 feet; thence S 89° 07' 23" W, 260.00 feet; thence S 74° 32' 41" W, 103.10 feet; thence S 89° 07' 23" W, 50.00 feet to a point on the east right-of-way line of Rock Road; thence southerly parallel and 50.00 feet adjacent to the west line of the northwest quarter of said Section 5 bearing S 0° 54' 22" E, 1150.01 feet to a point on the south line of said northwest quarter thence continuing southerly parallel and 50.00 feet adjacent to the west line of the southeast quarter of said Section 5 bearing S 1° 01' 02" E, 820.18 feet to the point of beginning; containing 19.37 acres, more or less.

I hereby certify that the details on this plat are correct to the best of my knowledge and belief this _____ day of _____, 1984.

Michael D. Harding, P.E.
Mid-Kansas Engineering Consultants, P.A.
240 North Rock Road, Suite 130
Wichita, Kansas 67206

Know all men by these presents that we the undersigned property owners of the land as above set forth in the Engineer's Certificate have caused the same to be surveyed and platted into Lots, Blocks, a Street and a Reserve, the same to be known as "Silverleaf", an addition to Wichita, Sedgwick County, Kansas. The street is hereby dedicated to and for the use of the public. Easements for construction and maintenance of public utilities, as indicated on the accompanying plat, are hereby granted to the City of Wichita. Reserve "A" is platted for construction and maintenance of public utilities, parking, median, landscaping, open space, drainage, a wall, a guard house, a gate, and a private street. The reserve is to be owned and maintained by the Silverleaf Homeowners Association. All abutters rights of access to or from Rock Road over and across the west line of "Silverleaf" are hereby granted to the City of Wichita, Kansas. The building setbacks shall be in accordance with the Tallgrass Community Unit Plan (D.P. - 98) on file in the Wichita-Sedgwick County Metropolitan Area Planning Department Office.

Tallgrass Company, a partnership

By: _____
E. D. Ritchie, partner

STATE OF KANSAS
COUNTY OF SEDGWICK

Be it remembered that on this _____ day of _____, 1984, before me, a Notary Public in and for said State and County, came Tallgrass Company, a partnership, by E. D. Ritchie, partner, to me personally known to be the same person who executed the foregoing instrument of writing and duly acknowledged the execution of the same. In testimony whereof I have hereunto set my hand and affixed my notarial seal the day and year above written.

_____, Notary Public
My Appointment Expires: _____

This plat of "Silverleaf" has been submitted to and approved by the Wichita-Sedgwick County Metropolitan Area Planning Commission, Wichita, Kansas.

Dated this _____ day of _____, 1984.

Wichita-Sedgwick County Metropolitan Area Planning Commission

Robert K. Chishola, Chairman

Robert A. Jukin, Secretary

This plat approved and all dedications shown hereon, if any, accepted by the City Commission of the City of Wichita, Kansas, this _____ day of _____, 1984.

Robert C. Knight, Mayor

Donald C. Gistick, City Clerk

This plat approved and all dedications shown hereon, if any, accepted by the Board of County Commissioners of Sedgwick County, Kansas, this _____ day of _____, 1984.

Jack Spratt, Chairman

Donald E. Gragg, Commissioner

Tom Scott, Commissioner

Attest: Dorothy K. White, County Clerk

Entered on transfer record this _____ day of _____, 1984.

Dorothy K. White, County Clerk

STATE OF KANSAS
COUNTY OF SEDGWICK

This is to certify that this instrument was filed for record in the Register of Deeds Office at _____ on the _____ day of _____, 1984.

Bette F. McCart, Register of Deeds

Pat Kotzler, Deputy

RO.B. 100.00

MID-KANSAS ENGINEERING CONSULTANTS PA
240 NORTH ROCK ROAD
WICHITA, KANSAS 67206
662-6564

**SILVERLEAF
FINAL PLAT
POINT SHEET**

1