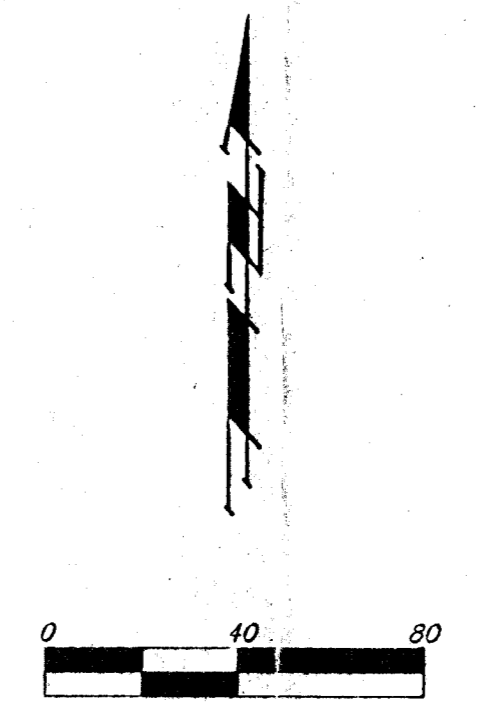
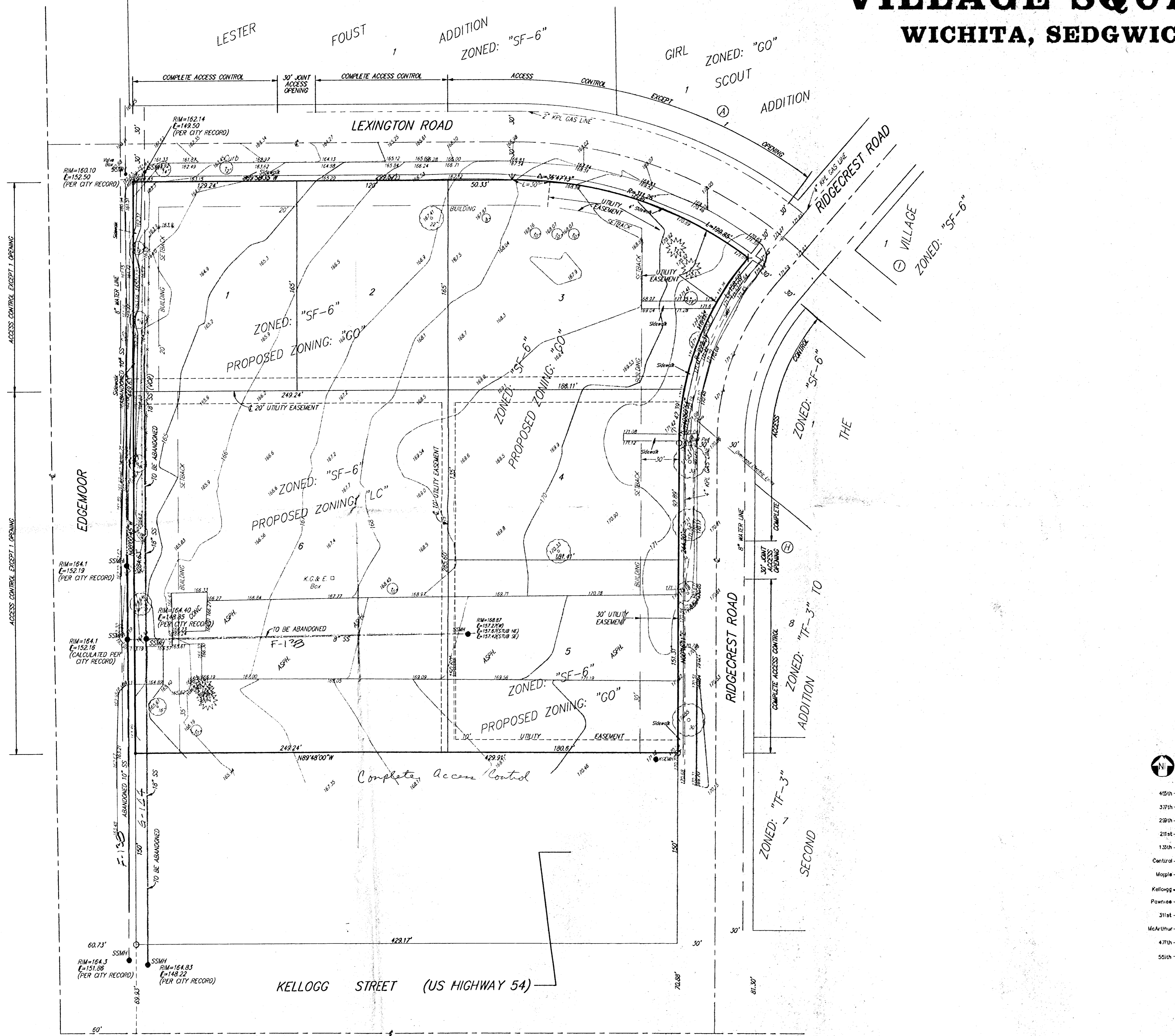


# PRELIMINARY PLAT

## VILLAGE SQUARE ADDITION

### WICHITA, SEDGWICK COUNTY, KANSAS



**LEGEND**

- FH = FIRE HYDRANT
- GUY = GUY ANCHOR
- LP = LIGHT POLE
- P = PINE TREE
- PP = POWER POLE
- SSMH = SANITARY SEWER MANHOLE
- ⊕ SSB Ped = SOUTHWESTERN BELL PEDESTAL
- T = TREE
- KOEMH = K G & M MANHOLE
- = #4 REBAR W/ BAUGHMAN CAP (FOUND)
- = 1/2" PEC IRON (FOUND)
- = 3/4" IRON (FOUND)

**LEGAL DESCRIPTION**

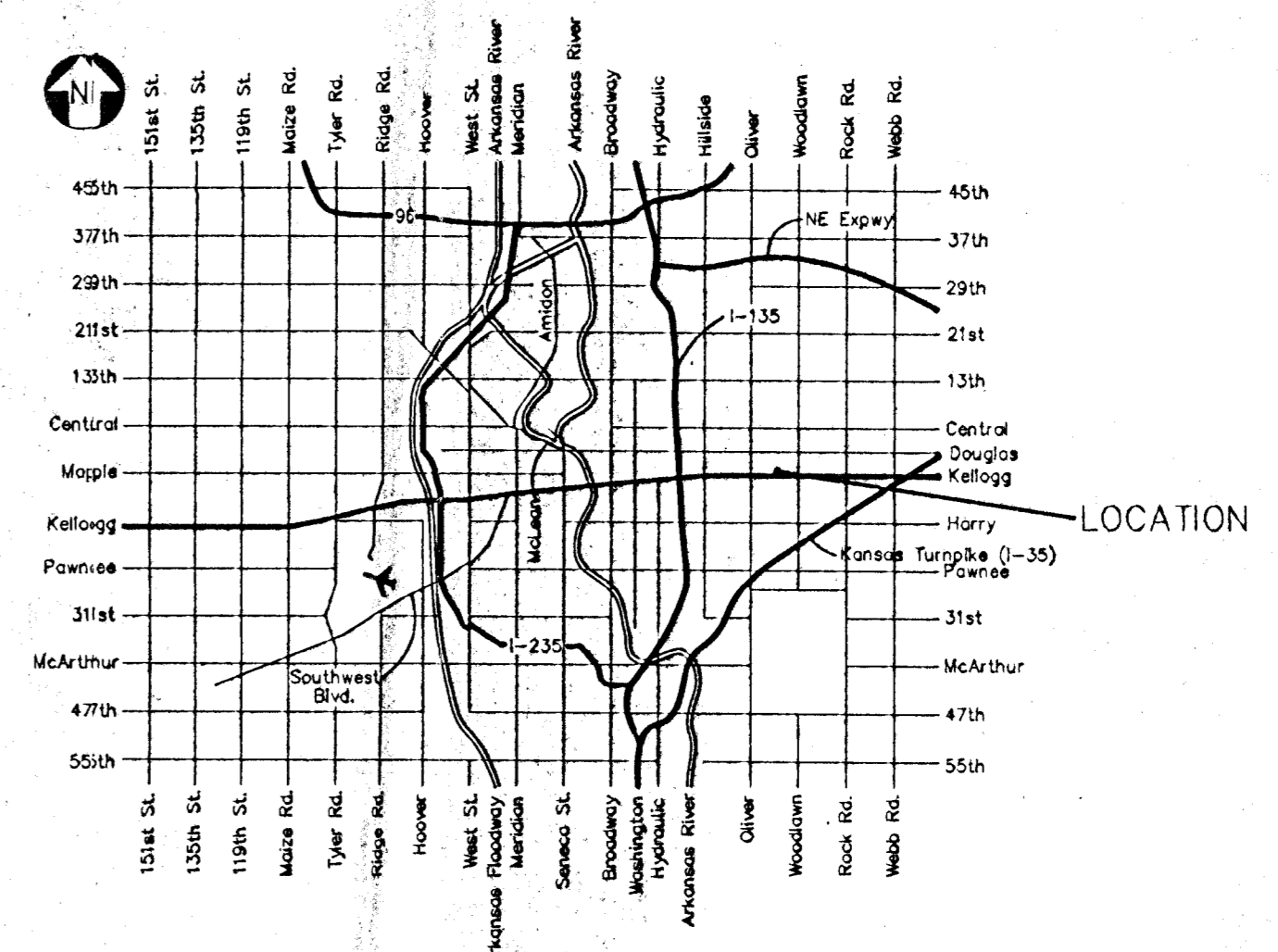
RESERVE "D", BLOCK G, SECOND ADDITION TO THE VILLAGE, AN ADDITION TO WICHITA, SEDGWICK COUNTY, KANSAS, EXCEPT THE SOUTH 150 FEET THEREOF.

**OWNER**

THE LUTHERAN CHURCH - MISSOURI SYNOD  
 ATTN: ELMER KARSTEN  
 2318 SW 10TH STREET  
 TOPEKA, KANSAS 66604-3927

**BENCHMARK**

SQUARE CUT TOP OF CURB IN THE MIDDLE OF SE CURB RETURN AT EDGEWOOD AND LEXINGTON, FIVE FEET, MORE OR LESS, EAST OF BACK OF WALK SOUTH.



VICINITY MAP

8 OCT 1997

**BAUGHMAN COMPANY P. A.**  
 ENGINEERING, SURVEYING, & PLANNING  
 (316)-282-7271 • 315 ELLIS • WICHITA, KANSAS 67211

NOTE:  
 \* 4" APX. GAS LINE  
 \* 3" E. OF THE  
 \* LINE OF EDGEWOOD  
 ZONED: "GO"  
 ACCESS CONTROL EXCEPT 1' OPENING

F-129  
 6/1/97