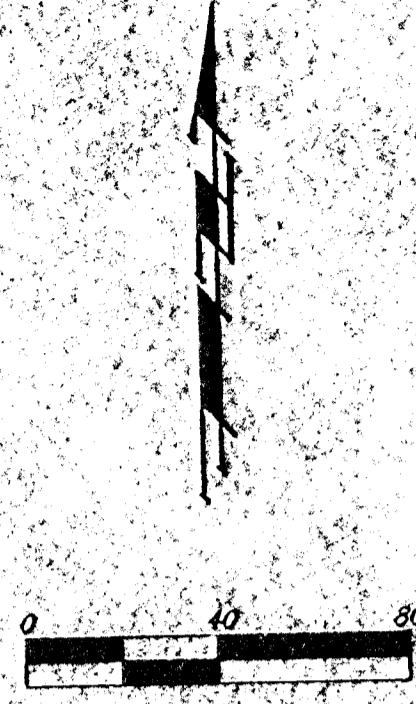
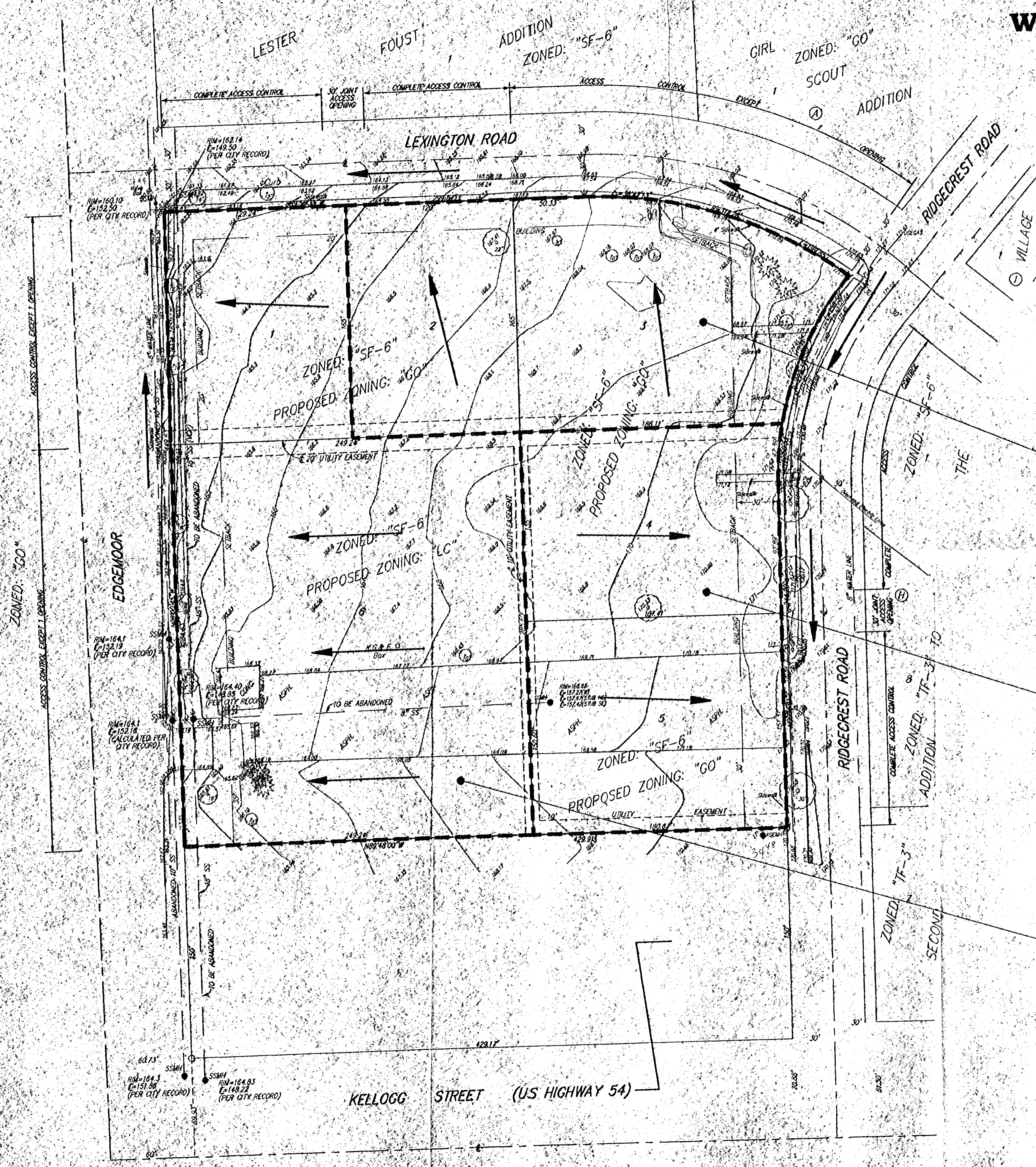


DRAINAGE CONCEPT VILLAGE SQUARE ADDITION WICHITA, SEDGWICK COUNTY, KANSAS

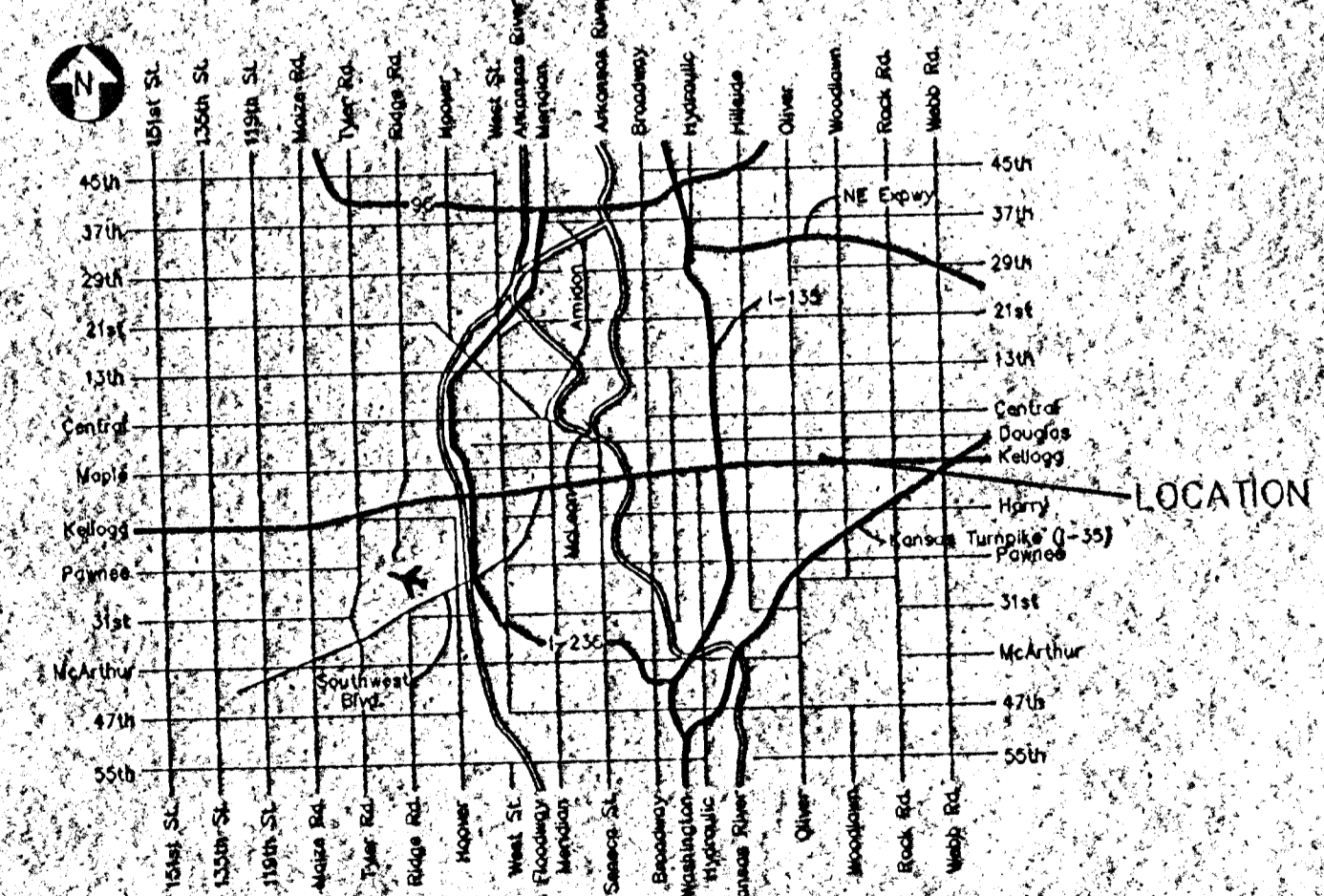


- LEGEND**
- - FH = FIRE HYDRANT
 - - GUY W/ GUY ANCHOR
 - - LP = LIGHT POLE
 - - P = PINE TREE
 - - PR = POWER POLE
 - - SSMH = SANITARY SEWER MANHOLE
 - - SWR Ped = SOUTHWESTERN BELL PEDESTAL
 - - T = TREE
 - - KCEMH # 1 1/2" R. MANHOLE
 - - 2" REBAR W/ BAUGHMAN'S CAP (FOUND)
 - - 1/2" PEG IRON (FOUND)
 - - X = CROSS (FOUND)
 - - 3/4" IRON (FOUND)

LEGAL DESCRIPTION
RESERVE "D", BLOCK 6, SECOND ADDITION TO THE VILLAGE, AN ADDITION TO WICHITA, SEDGWICK COUNTY, KANSAS, EXCEPT THE SOUTH 150 FEET THEREOF.

OWNER
THE LUTHERAN CHURCH - MISSOURI SYNOD
ATTN: ELMER KARSTENSEN
2319 SW 100th STREET
TOPERA, KANSAS 66004-3927

BENCHMARK
SQUARE CORNER OF CURB IN THE MIDDLE OF SE CURB SECTION AT EDGEMOOR AND LEXINGTON, FIVE FEET, MORE OR LESS, EAST OF BACK OF WALK SOUTH.



VICINITY MAP