

104.8
104.9
104.8

UNPLATTED



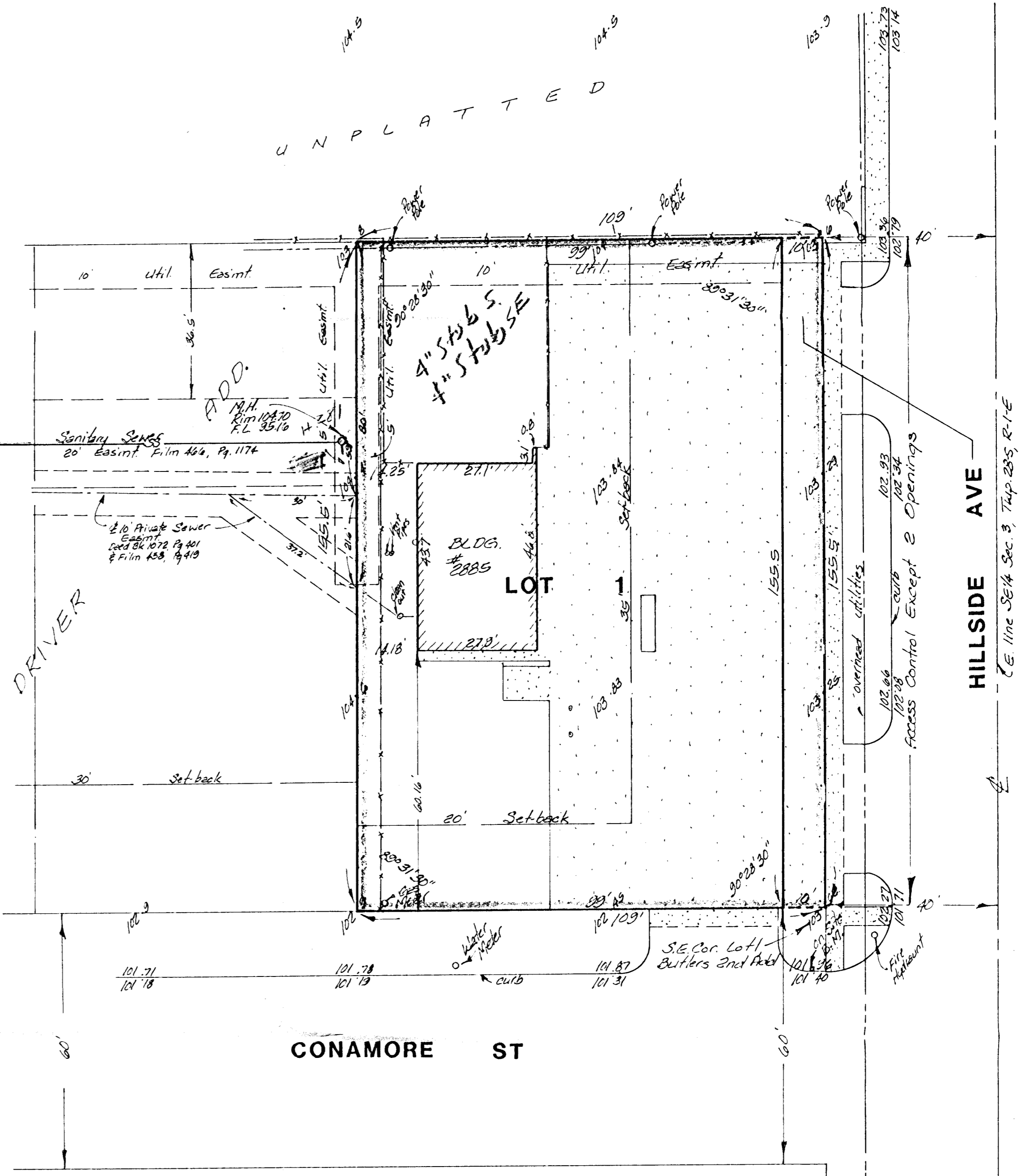
1" = 20'
ELEV. = CITY DATUM

BENCH MARK:
City Standard Disc. on N.E. Cor.
of R.C.B. at Hillside & Wassall
Elev. = 104.428 City Datum

On-site B.M.
"a" square cut on top of curb on
N. side of Conamore St. at N.W. Cor.
of Hillside & Conamore
Elev. = 101.96 City Datum

H 281

JOE DRIVER



SKETCH PLAT
VOGES VW ADDITION

LOTS 1 AND 2, EXCEPT THE WEST 150 FEET THEREOF,
 BUTLERS 2ND ADDITION, SEDGWICK COUNTY, KANSAS

CHARLES L VOGES