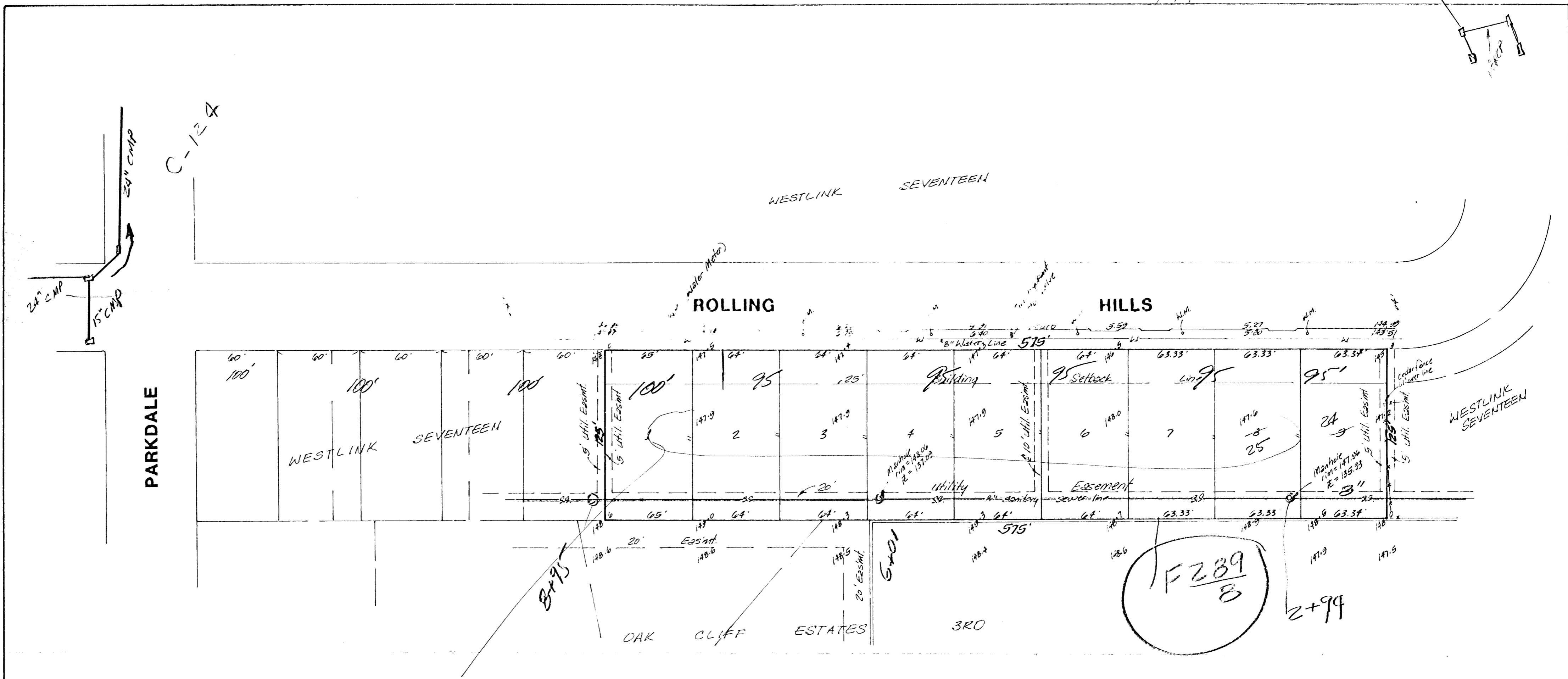


P.A.P.



PARKDALE

ROLLING HILLS

In

OAK CLIFF ESTATES

3RD

F289/8

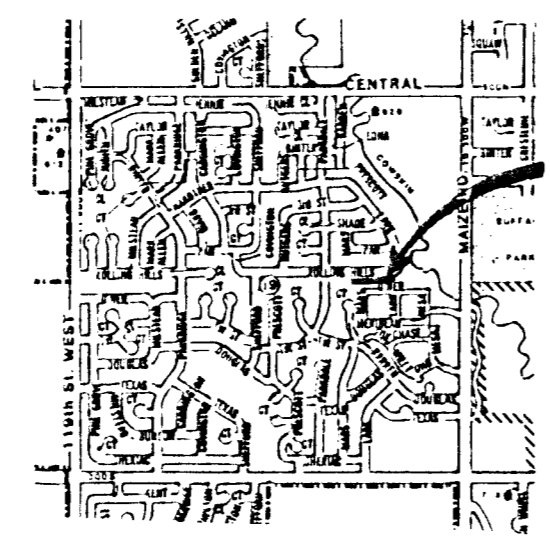
2+99

PRELIMINARY PLAT  
**WESTLINK VILLAGE 22ND ADDITION**

BEING A REPLAT OF LOTS 25-26-27-28-29-& 30, BLOCK 5, WESTLINK SEVENTEEN

OWNER: FIDELITY SAVINGS ASSOCIATION

Bench mark:  
 "1" cut on top of curb opposite  
 N.E. Corner of proposed lot 9 of  
 subject property  
 Elevation = 145.51 City Datum



SITE

