

COMPLETE ACCESS CONTROL

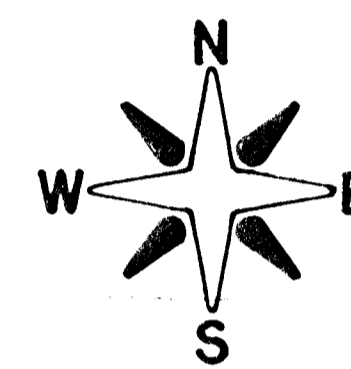
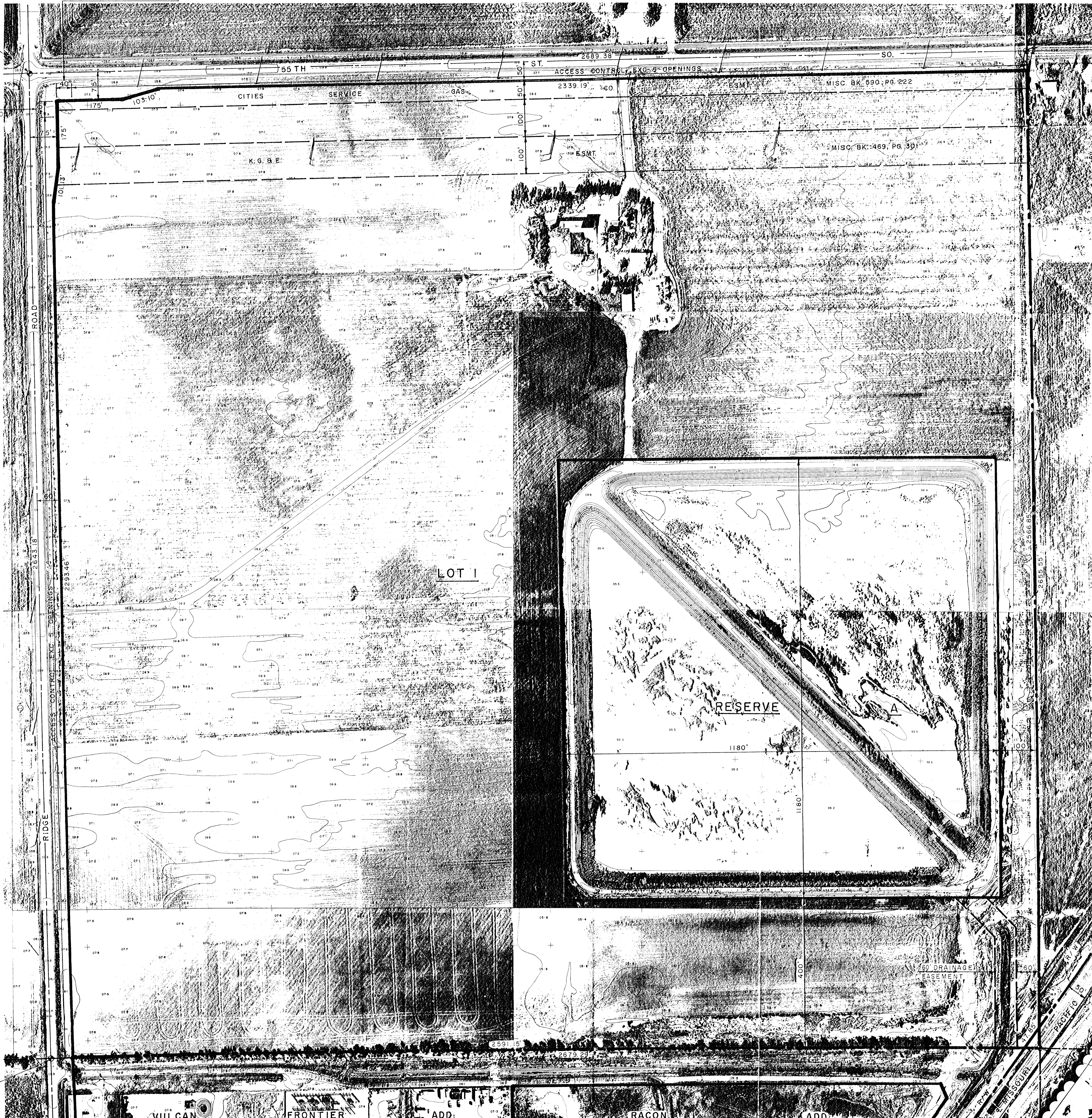
UNPLATTED

N.W. COR. NW 1/4
SEC. 27-28-1W

NE COR. NW 1/4
SEC. 27-28-1W

COMPLETE
ACCESS CONTROL

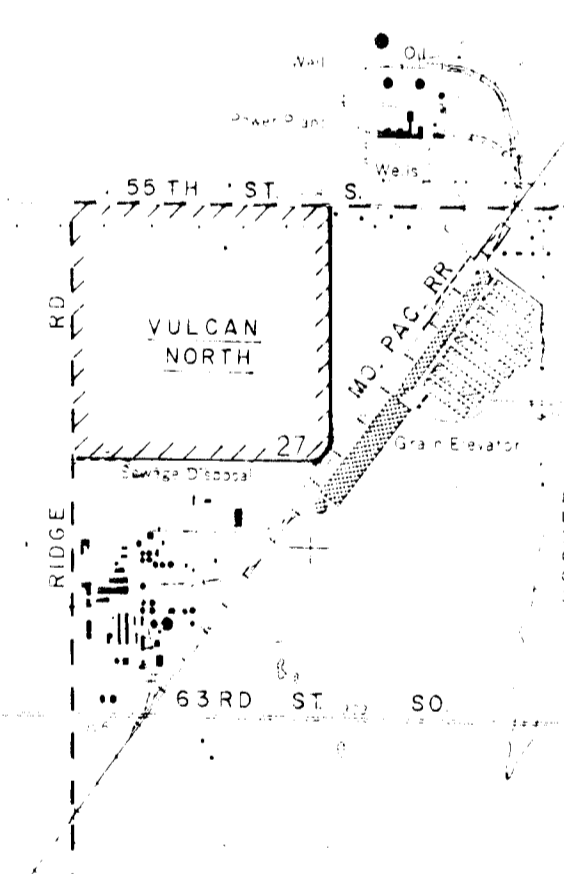
UNPLATTED



SCALE: 1" = 100'

B.M. - TOP IRON IN THIMBLE
NW COR. NW 1/4 SEC. 27
ELEV. 1306.83 (M.S.L.)

UNPLATTED



LOCATION MAP

RESERVE 'A' USES STORM
WATER RETENTION &
SEWAGE DISPOSAL

SW COR. NW 1/4
SEC. 27-28-1W

SE COR. NW 1/4
SEC. 27-28-1W

PRELIMINARY PLAT
VULCAN - NORTH ADDITION
 PART OF NW 1/4 SEC. 27-28-1W

NOV. 15, 1985

BAUGHMAN COMPANY, P.A.
 SURVEYING & ENGINEERING
 316-262-7271 • 330 LAURA • WICHITA, KANSAS 67211