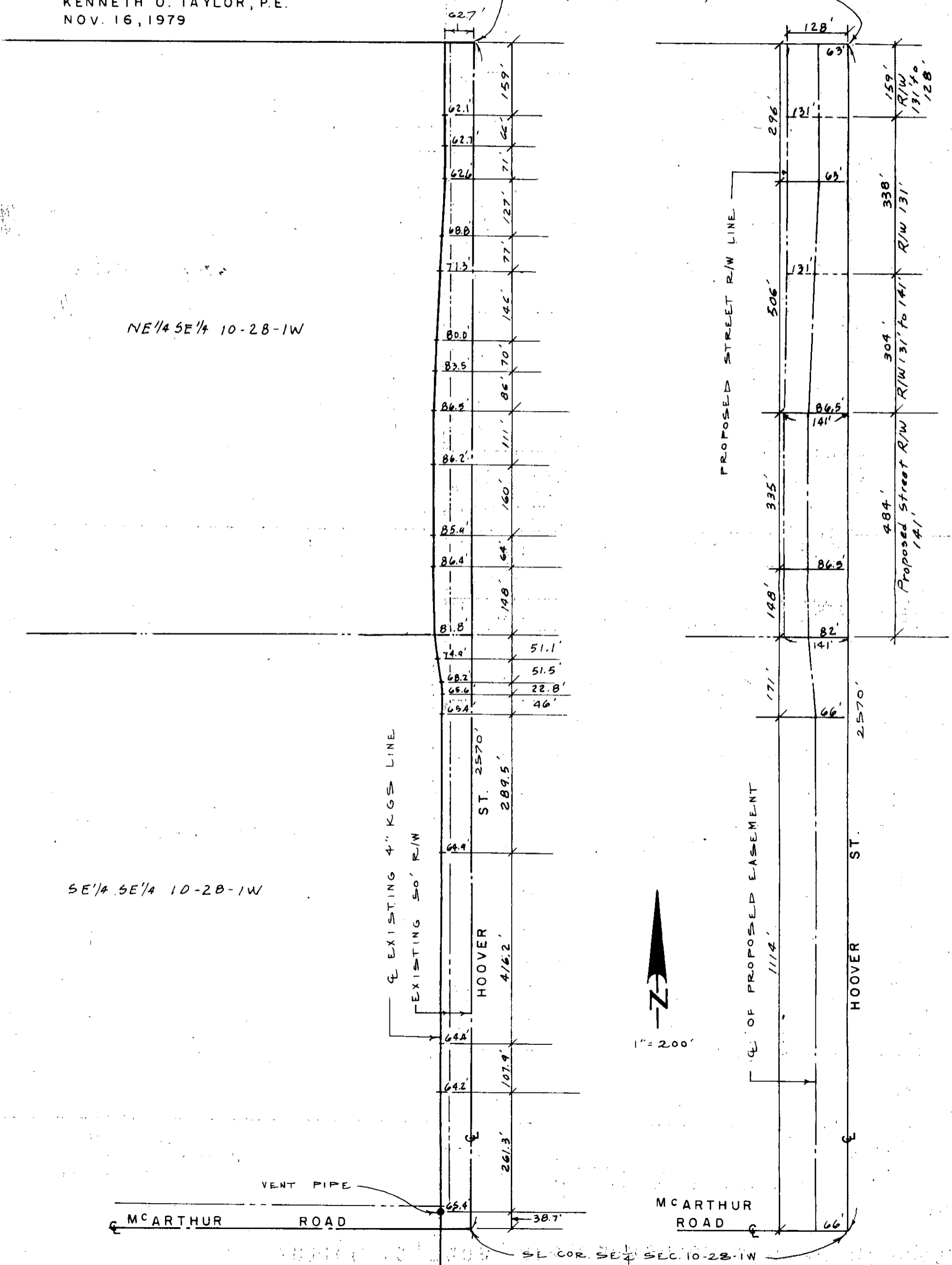


LOCATION OF KANSAS GAS SUPPLY LINE IN THE SE 1/4 OF SECTION 10, T28S, R1W, SEDGWICK COUNTY, KANSAS.

PREPARED BY:  
KENNETH O. TAYLOR, P.E.  
NOV. 16, 1979

NE COR. SE 1/4 SEC. 10-28-1W  
(COMMON POINT)



LOCATION OF EXISTING 4" KANSAS GAS SUPPLY LINE

LOCATION OF THE EASEMENT

SE COR. SE 1/4 SEC. 10-28-1W  
(COMMON POINT)