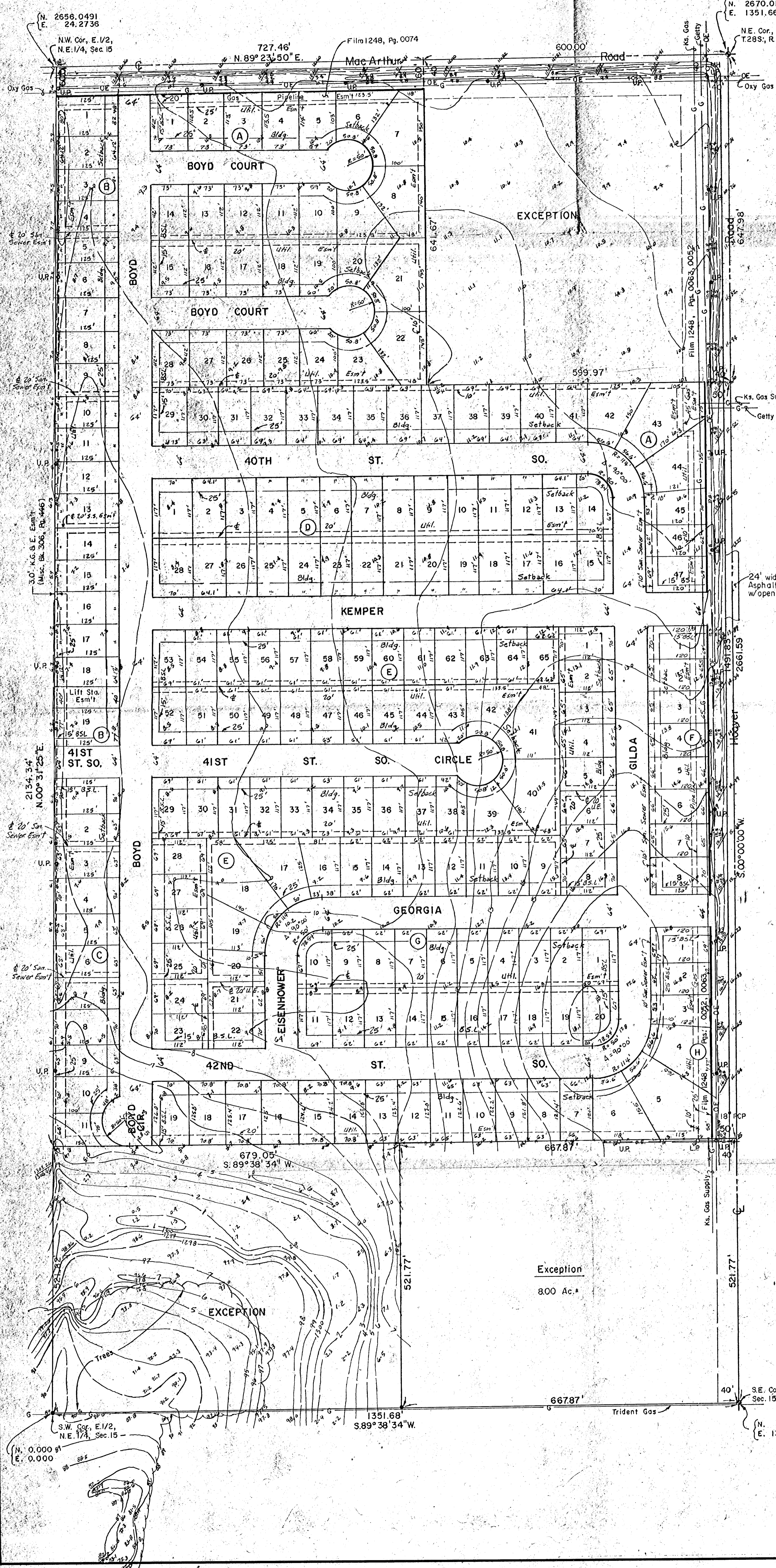
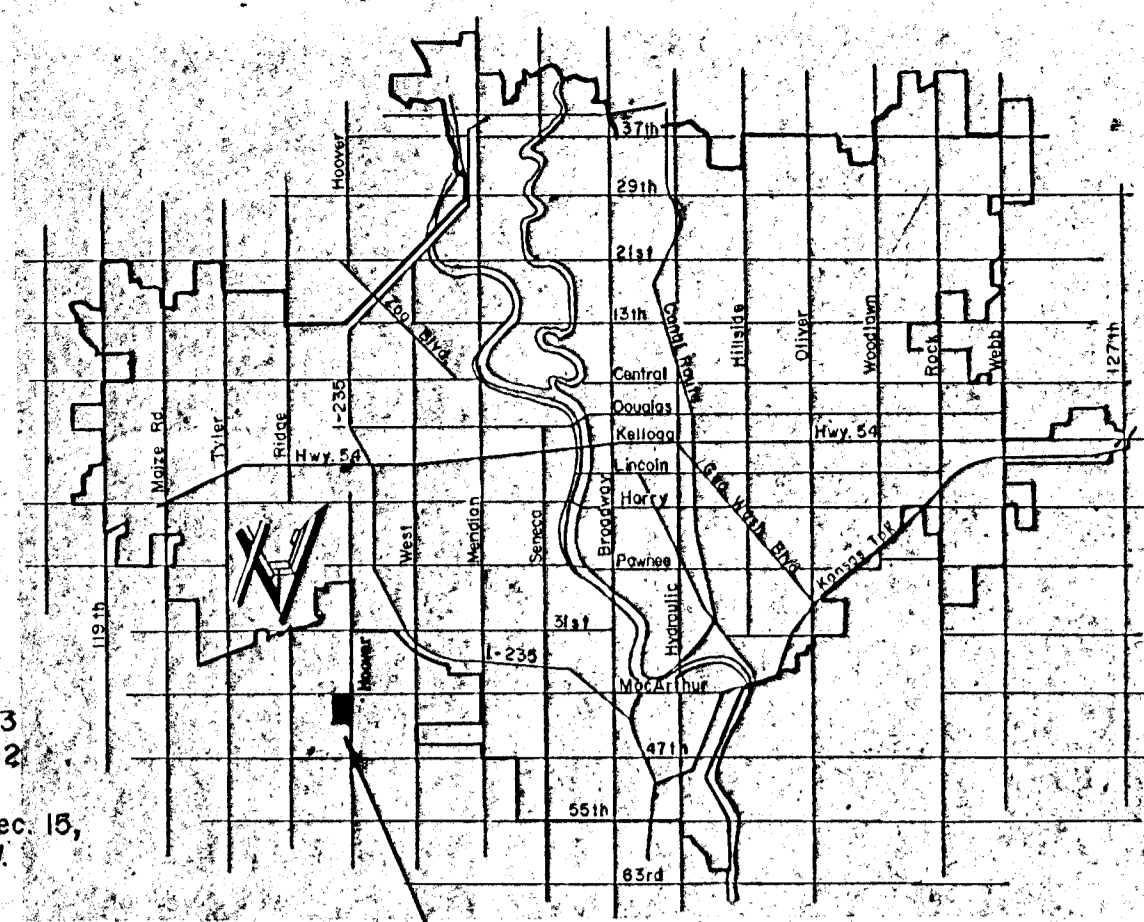
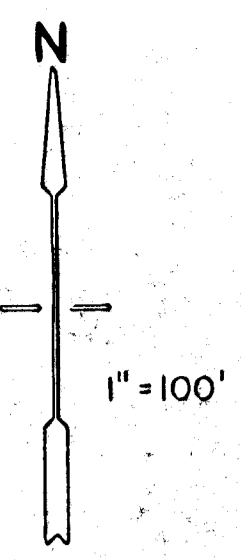


PRELIMINARY PLAT
of
WHEATLAND ADDITION
SEDGWICK CO., KANSAS



LEGAL DESCRIPTION

THE E. 1/2 OF THE NORTHEAST QUARTER OF SECTION 15, T28S, R.11W, SEDGWICK COUNTY, KANSAS, EXCEPT A TRACT DESCRIBED AS BEGINNING AT THE NORTHEAST CORNER OF SAID SECTION 15; THENCE SOUTH ALONG THE EAST LINE OF SAID NORTHEAST 1/4, A DISTANCE OF 647.98 FEET; THENCE WEST AT AN INCLUDED ANGLE OF 90° 03' 00" A DISTANCE OF 599.97 FEET; THENCE NORTH PARALLEL WITH THE EAST LINE OF SAID NORTHEAST 1/4, A DISTANCE OF 841.97 FEET TO A POINT IN THE NORTH LINE OF SAID NORTHEAST 1/4; THENCE EAST 600.00 FEET TO THE POINT OF BEGINNING; AND ALSO EXCEPT A TRACT DESCRIBED AS BEGINNING AT THE SOUTHEAST CORNER OF THE NORTHEAST 1/4 OF SAID SECTION 15; THENCE NORTH ALONG THE EAST LINE OF SAID NORTHEAST 1/4, A DISTANCE OF 521.77 FEET; THENCE WEST PARALLEL WITH THE SOUTH LINE OF SAID NORTHEAST 1/4, A DISTANCE OF 1348.32 FEET TO A POINT IN THE WEST LINE OF THE EAST 1/2 OF SAID NORTHEAST 1/4; THENCE SOUTH 521.82 FEET TO THE SOUTHWEST CORNER OF THE EAST 1/2 OF SAID NORTHEAST 1/4; THENCE EAST, A DISTANCE OF 1351.68 FEET TO THE POINT OF BEGINNING.

NOTE:
IT IS ANTICIPATED THAT THE FOLLOWING LOTS AND BLOCKS, AS INDICATED ON THE PRELIMINARY PLAT, WILL COMPRISE THE INITIAL FINAL PLAT.

BLOCK	LOTS
A	thru 47, inclusive
B	thru 18, inclusive, and Lift Station easement
C	thru 28, inclusive
D	thru 3, inclusive, and also 53 thru 65, inclusive
E	thru 6, inclusive

MOEHRING & ASSOCIATES
CONSULTING ENGINEERS
WICHITA

