

CHISHOLM TRAIL
CHURCH OF CHRIST
ZONED R-1

N00°01'25"W
1279.94'

VIRGIL J. KOEHN
ZONED L.C.

SYLVIA A. MENGES
ZONED L.C.

JAMES E. STEWART & WIFE
ZONED L.C.

CHISHOLM TRAIL STATE BANK
ZONED L.C.

LOT B BLK. 1
CHISHOLM CREEK ADDITION
ZONED L.C.

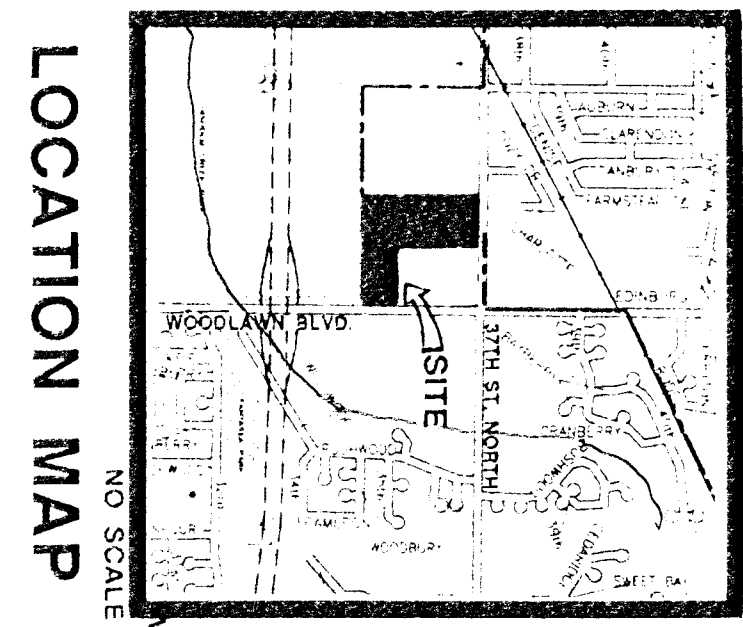
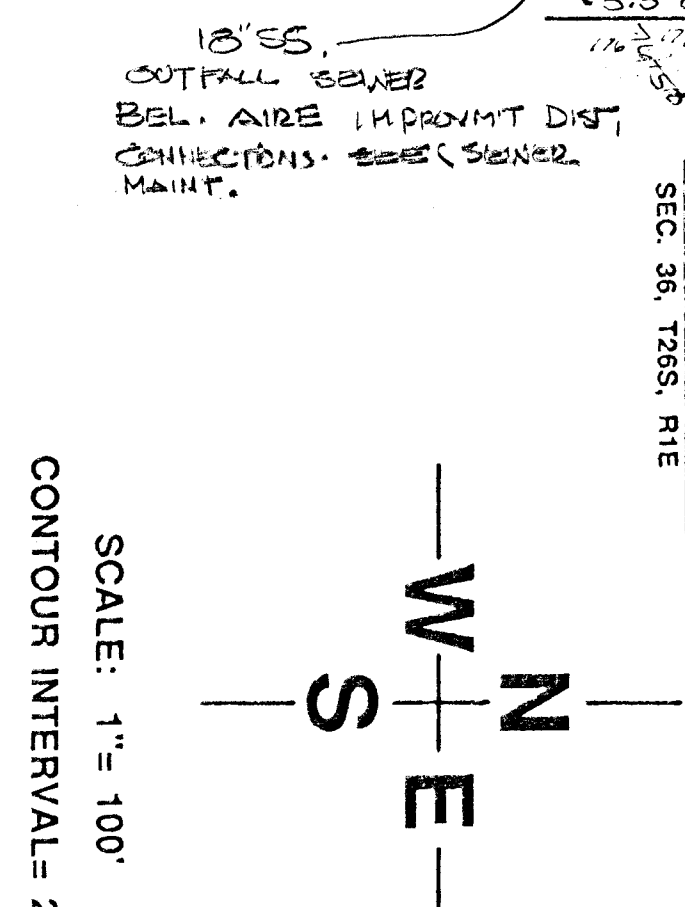
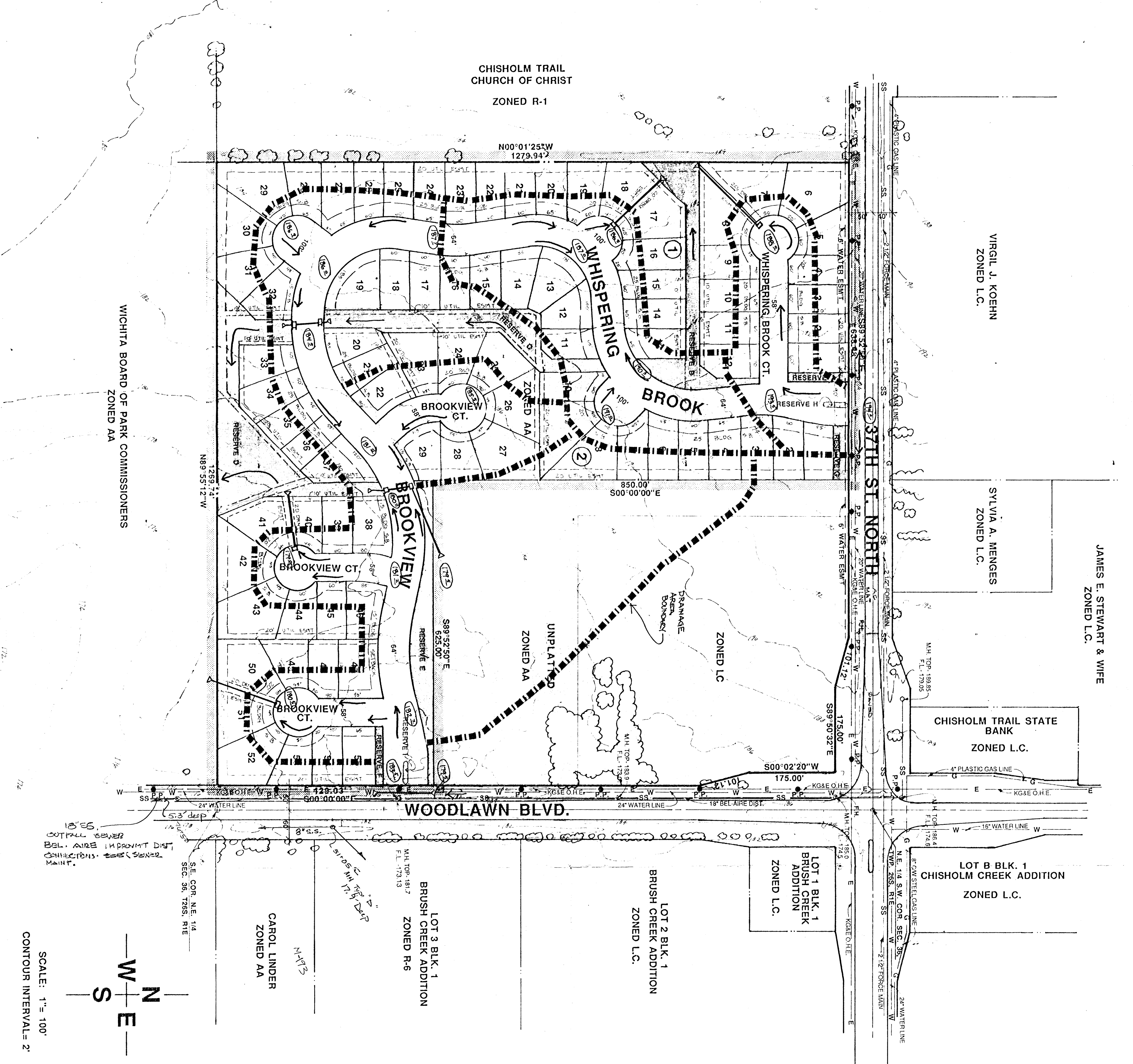
LOT 1 BLK. 1
BRUSH CREEK
ADDITION
ZONED L.C.

LOT 2 BLK. 1
BRUSH CREEK ADDITION
ZONED L.C.

LOT 3 BLK. 1
BRUSH CREEK ADDITION
ZONED R-6

CAROL LINDER
ZONED AA

WICHITA BOARD OF PARK COMMISSIONERS
ZONED AA



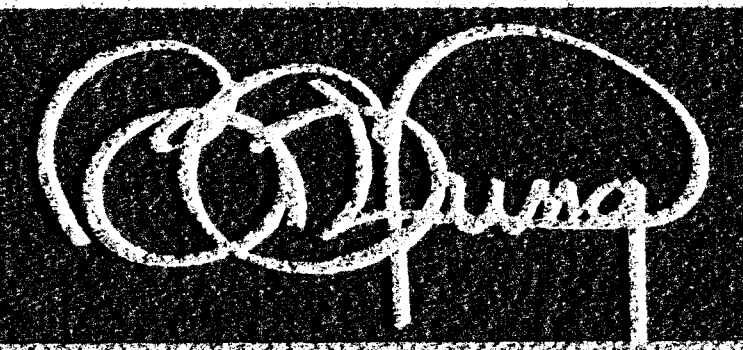
- NOTES:**
1. BENCHMARK 70' W. AND 30' N. OF BOTH WOODLAWN & 37TH ST. NO. CITY OF WICHITA DATUM. ELEV. - 1861.69.
 2. TOPOGRAPHY OBTAINED DECEMBER 7, 1981.
 3. DRAINAGE CONCEPT PLAN TO BE PREPARED BY JOE & ASSOCIATES AND SUBMITTED TO CITY ENGINEER.
 4. RESERVES B, C, D & E TO PERMIT DRAINAGE, DRAINAGE STRUCTURES, PONDS, LANDSCAPING, SIDEWALKS, GAZEBOS, RECREATION FACILITIES AND UTILITIES CONFINED TO EASEMENTS & UTILITY SERVICE CONNECTIONS.
 5. RESERVES A, F, G, H & I TO PERMIT LANDSCAPING, ENTRY MONUMENTS, IRRIGATION, SIDEWALK AND UTILITIES CONFINED TO EASEMENTS.

PRELIMINARY PLAT
WHISPERING BROOK

OWNER: NESTOR R. WEIGAND JR., LESLIE RUDD & DEBORAH FREEMAN, 151 N. MARKET, WICHITA, KANSAS 67202 PH: 316-262-8400

DRAINAGE CONCEPT

POE & ASSOCIATES OF KANSAS, INC.
Consulting Engineers
434 N. Oliver, Suite 110 Wichita KS 67208 316-6854114



BILL G. YUNG DESIGN
612 E. 20TH STREET NORTH WICHITA, KS 67207
316-685-2261 FAX 316-685-2264