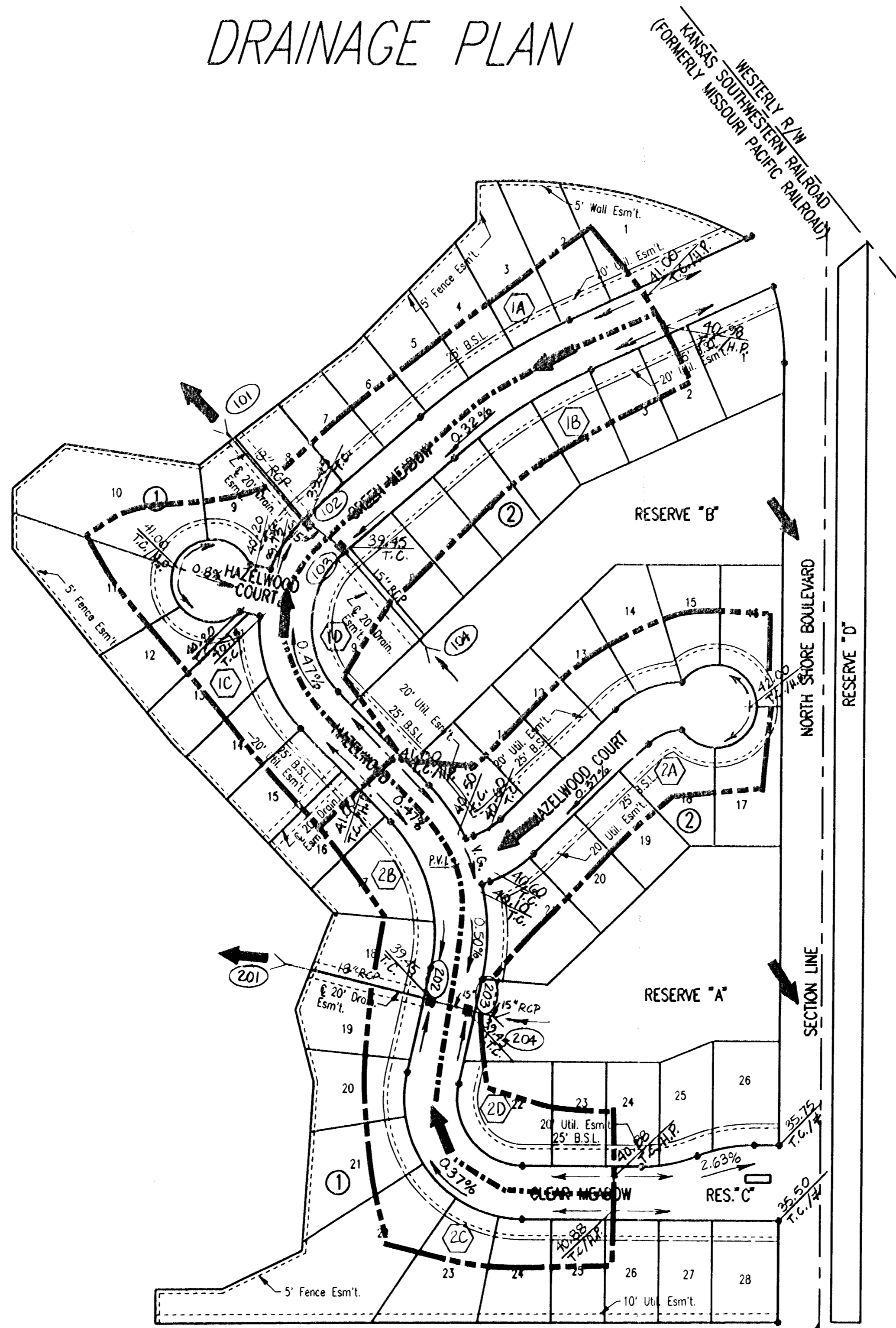


HORSESHOE BAY ADDITION TO WICHITA, SEDGWICK COUNTY, KANSAS DRAINAGE PLAN



KANSAS WESTERN R.R. / FORMERLY MISSOURI PACIFIC RAILROAD



SCALE: 1"=100'
 ● = IRON SET
 C.A.C. = COMPLETE ACCESS CONTROL
 B.S.L. = BUILDING SETBACK LINE
 BENCH MARK: CITY OF WICHITA BENCH MARK DISC, 30 FEET NORTH AND 37 FEET EAST OF THE INTERSECTION OF THE CENTERLINES OF HOOVER AND 21ST ST. N.
 ELEV.=139.991 CITY DATUM
 ELEV.=1327.17 M.S.L.

LEGEND

- MAJOR BASIN BOUNDARY
- - - MINOR BASIN BOUNDARY
- MINOR STORM FLOW
- MAJOR STORM FLOW
- PROPOSED STORM SEWER & INLET
- PROPOSED STORM SEWER & MANHOLE
- ⬡ (IA) DRAINAGE BASIN IDENTIFIER
- ⊙ (101) NODE IDENTIFIER
- T.C. TOP OF CURB ELEVATION
- H.P. HIGH POINT
- ≠ MATCH EXISTING

NOTE: ELEVATIONS BASED ON C.O.W. DATUM
 M.S.L. DATUM = C.O.W. DATUM + 1187.2
 COMPUTATIONS BASED ON ROLL CURB & GUTTER, REINFORCED CONCRETE PIPE (n=0.013) & MINIMUM WALK GRADE OF 0.3 FEET ABOVE TOP OF CURB

S.E. Corner, NE 1/4, S.W. 1/4
 Sec. 3, T27S, R1W
 of the 6th P.M.

S.E. Corner, S.W. 1/4
 Sec. 3, T27S, R1W
 of the 6th P.M.

MINIMUM PAD (LOWEST OPENING) ELEVATION FOR THE FOLLOWING LOTS SHALL BE AS SHOWN BELOW:

LOTS	BLOCK	CITY DATUM	M.S.L.
1 THROUGH 28	1	137.5	1324.7
1 THROUGH 28	2	137.5	1324.7

MINIMUM LOWEST FLOOR ELEVATION FOR THE FOLLOWING LOTS SHALL BE AS SHOWN BELOW:

LOTS	BLOCK	CITY DATUM	M.S.L.
1 THROUGH 28	1	136.3	1323.5
1 THROUGH 28	2	136.3	1323.5

