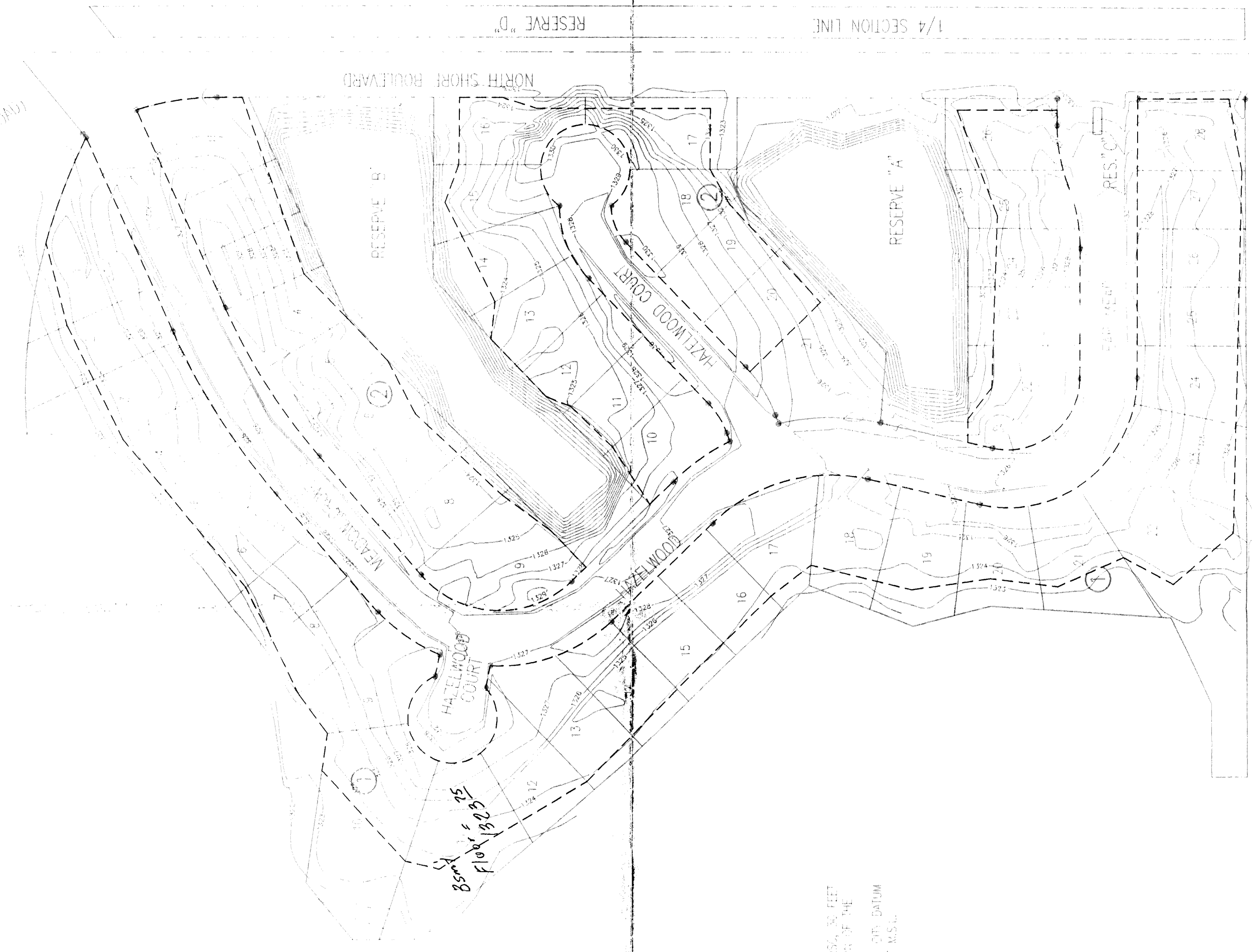


KANSAS SOUTHWESTERN RAILROAD
(FORMERLY MISSOURI PACIFIC RAILROAD)
UNIVERSITY ST. N.

HORSESHOE BAY

AN ADDITION TO WICHITA, SEDGWICK COUNTY, KANSAS



SCALE: 1" = 100'
IRON SET

BENCH MARK: CITY OF WICHITA BENCH MARK DATA, 30 FEET NORTH AND 37 FEET EAST OF THE INTERSECTION OF THE CENTERLINES OF HOOPER AND 21ST ST. N.
ELEV = 1339.95 - 0.05 DATUM
ELEV = 1327.17 M.S.L.

B.F.E. = 1323.0 (2/95 COME by Baylman)
Min P.S. - Min. Floor. = 1323.5 (Affidavit '96)