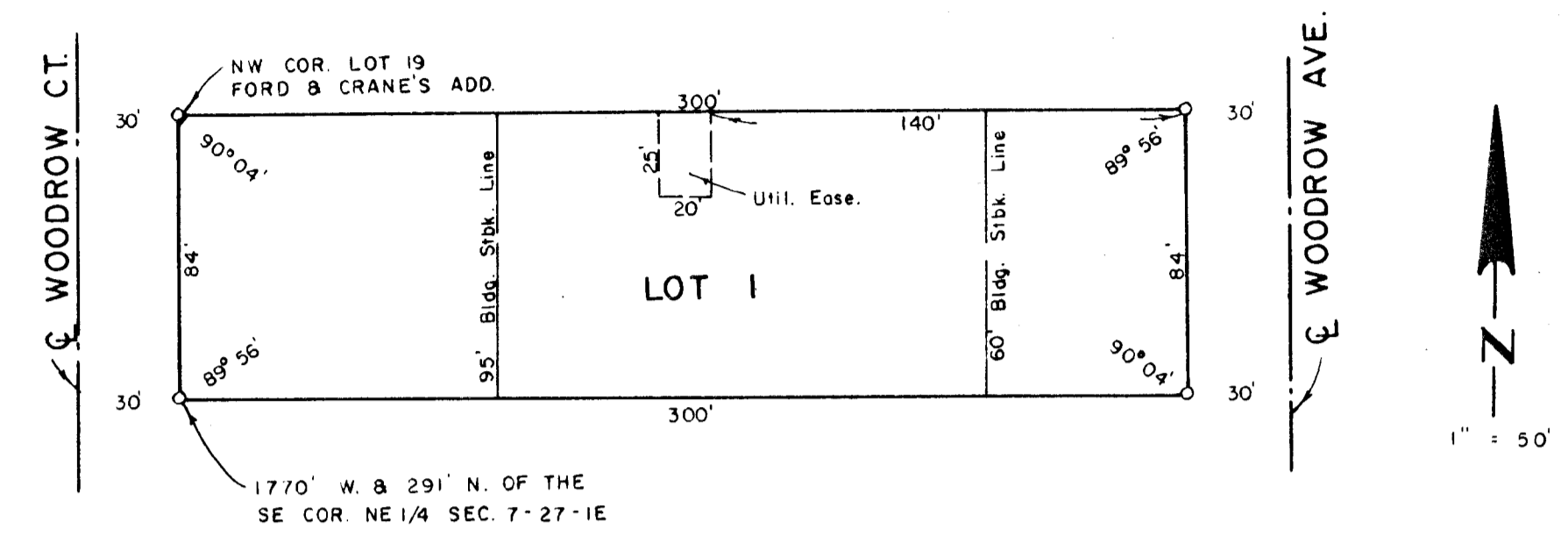


Hybritech Addition (Replat)

HYBRITECH ADDITION

WICHITA, SEDGWICK COUNTY, KANSAS



State of Kansas, County of Sedgwick, SS.

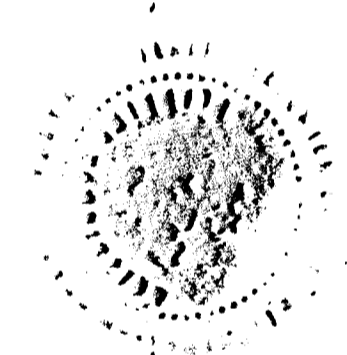
I, Lowell D. High, Land Surveyor in the State and County do hereby certify that I have surveyed and platted "Hybritech Addition", Wichita, Sedgwick County, Kansas and that the accompanying plat is a REPLAT and a true and correct exhibit of said survey described as follows: Lots 19, 21, 23, and the north 9 feet of Lot 25, Woodrow Court, and Lots 20, 22, 24, and the north 9 feet of Lot 26, Woodrow Avenue, in Ford and Cranes Addition to the City of Wichita, Sedgwick County, Kansas.

Lowell D. High
Lowell D. High, L.S.

2-3-86

This plat of "Hybritech Addition", Wichita, Sedgwick County, Kansas has been submitted to and approved by the Wichita-Sedgwick County Metropolitan Area Planning Commission, Wichita, Kansas.

Dated this 25th day of NOVEMBER, 1985.



Wichita-Sedgwick County Metropolitan Area Planning Commission

Davis Zupach, Chairman
Michael E. Lindebak, Secretary

Know all men by these presents that Oak Knoll Inc., a Kansas Corporation, by Randall J. Voth, President has caused the land described in the Land Surveyor's Certificate to be platted into a lot to be known as "Hybritech Addition", Wichita, Sedgwick County, Kansas.

The utility easement is hereby granted as indicated for the construction and maintenance of all public utilities.

Oak Knoll, Inc.
a Kansas Corporation,

Randall J. Voth
Randall J. Voth, President

ATTEST: *Lewis W. Lintzen*, Secretary

This plat approved and all dedications shown hereon accepted by the Board of City Commissioners of the City of Wichita, Kansas, this 14th day of MARCH, 1986.

Robert C. Brown, Mayor
Donald C. Gisick, City Clerk

Entered on transfer record this _____ day of _____, 1986.

Don Wright, County Clerk

State of Kansas, County of Sedgwick, SS.

The foregoing instrument was acknowledged before me this 3rd day of February, 1986 by Randall J. Voth, President, Oak Knoll, Inc., a Kansas Corporation.

Greg M. Madenwald, Notary Public.

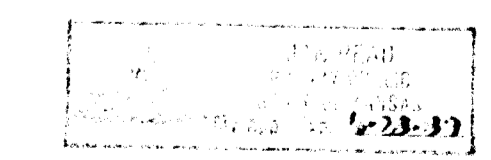
My Commission expires: April 14, 1986

Wichita State Bank, Wichita, Kansas, by *Larry G. Burns*, Mortgagee to the land described in the Land Surveyor's Certificate, does hereby consent to the platting of "Hybritech Addition", Wichita, Sedgwick County, Kansas.

State of Kansas, County of Sedgwick, SS.

The foregoing instrument was acknowledged before me this 3rd day of February, 1986, by Larry G. Burns,

Larry G. Burns, Vice President, Wichita State Bank, Wichita, Kansas.



Greg M. Madenwald, Notary Public

My Commission expires: June 23, 1989

State of Kansas, County of Sedgwick, SS.

This is to certify that this instrument was filed for record in the Register of Deeds Office, at _____ o'clock, _____ m., on the _____ day of _____, 1986.

Pat Kettler, Register of Deeds
Ed Reso, Deputy