

SAVANNA AT CASTLE ROCK RANCH 7TH ADDITION TO SEDGWICK COUNTY, KANSAS

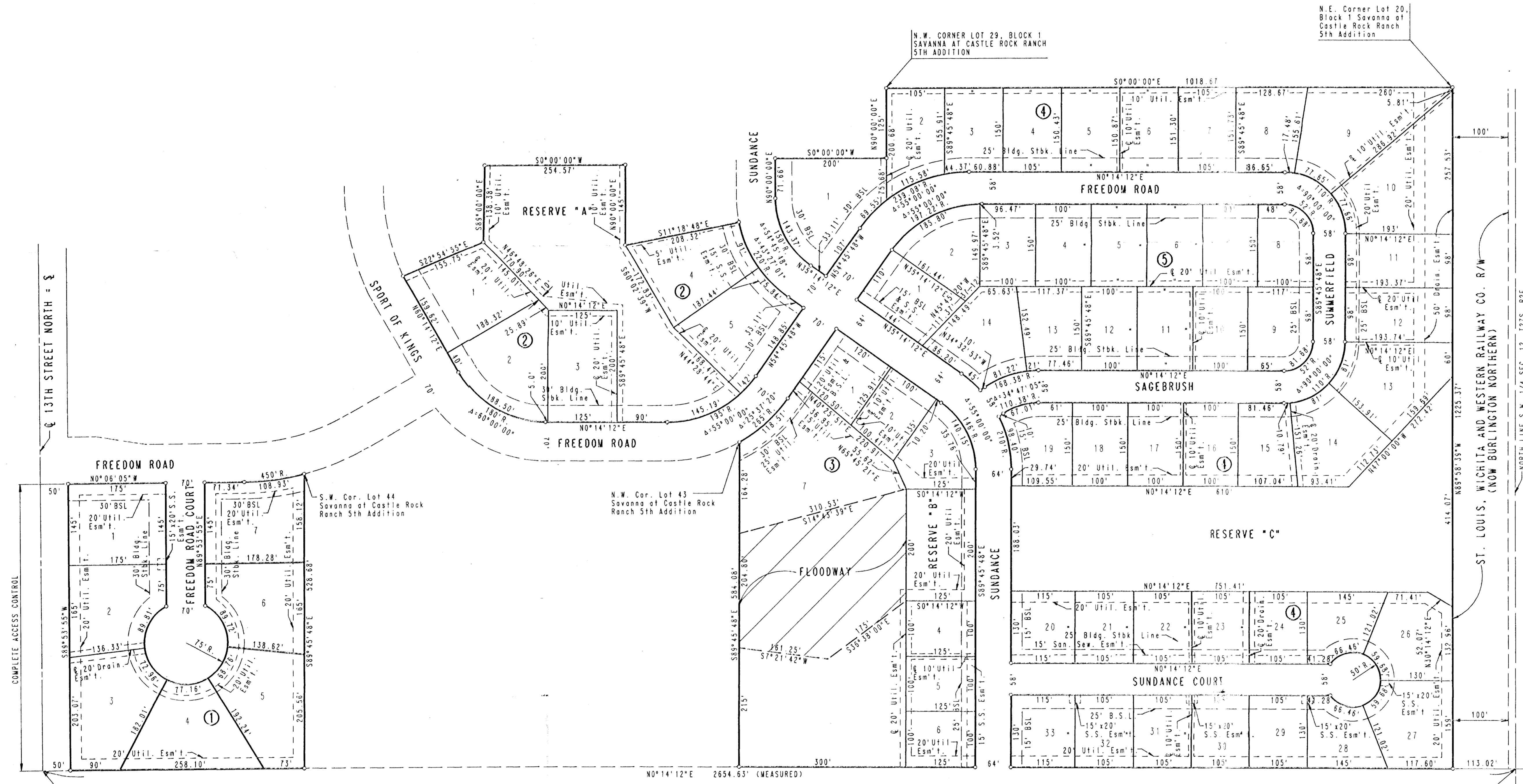


SCALE: 1"=100'

S.S. = SANITARY SEWER
B.S.L. = BUILDING SETBACK LINE

B.M. - RAILROAD SPIKE IN H.L.P. 43' S.E. OF S.W. CORNER SEC. 12, T27S, R2E OF THE 6TH P.M. ELEV. +1352.87 M.S.L.
B.M. - RAILROAD SPIKE (1.5' ABOVE GROUND) IN WEST FACE OF POWER POLE ON EAST R/W OF 143RD STREET EAST AT 835' NORTH OF Q 13TH STREET NORTH. ELEV. +1348.66 M.S.L.

MINIMUM PAD ELEVATION (LOWEST OPENING) SHALL BE AS FOLLOWS:
BLOCK 2 ELEV. 1350.0 M.S.L.
LOTS 1 THROUGH 5 ELEV. 1343.0 M.S.L.
BLOCK 3 ELEV. 1343.0 M.S.L.
LOTS 3, 4, AND 7 ELEV. 1345.0 M.S.L.
BLOCK 4 ELEV. 1345.0 M.S.L.
LOTS 10 THROUGH 26



Q 13TH STREET NORTH = S

COMPLETE ACCESS CONTROL

ST. LOUIS, WICHITA AND WESTERN RAILWAY CO. R/W
NORTH LINE S.W. 1/4 SEC. 12, T27S, R2E

S.E. Corner S.W. 1/4 Sec. 12, T27S, R2E of the 6th P.M.

N.W. Cor. Lot 43 Savannah at Castle Rock Ranch 5th Addition

N.E. Corner S.W. 1/4 Sec. 12, T27S, R2E of the 6th P.M.