

PRELIMINARY PLAT

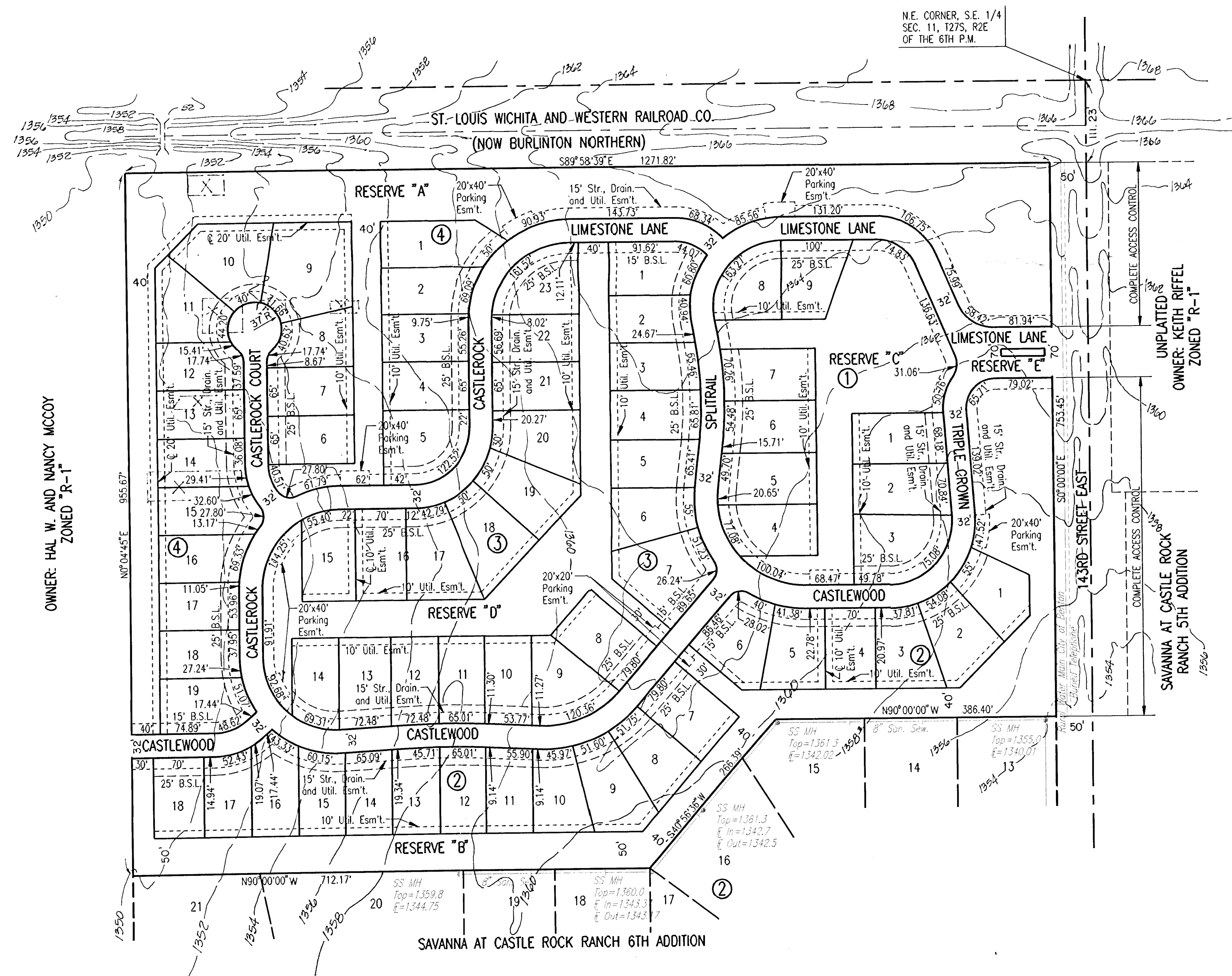
# SAVANNA AT CASTLE ROCK RANCH 8TH ADDITION

OWNER/DEVELOPER:

CASTLE ROCK RANCH, INC.  
14500 SPORT OF KINGS  
WICHITA, KANSAS 67230

ENGINEER:

PROFESSIONAL ENGINEERING CONSULTANTS, P.A.  
303 S. TOPEKA  
WICHITA, KANSAS 67202

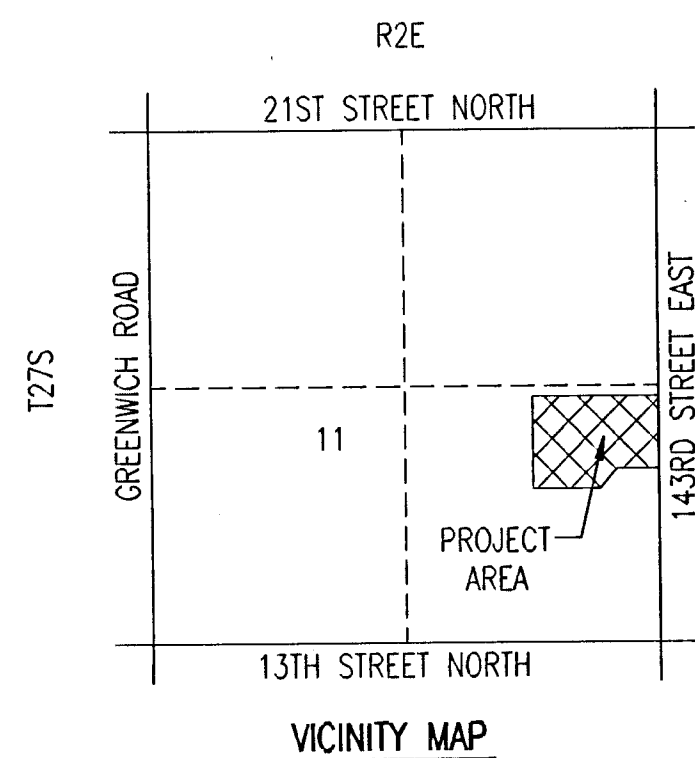


SCALE: 1"=100'  
DATE: 12-4-95  
TOPO: JULY 1981  
B.M. - RAILROAD SPIKE IN H.L.P. 43' S.E. OF THE S.W. CORNER  
SEC. 12, T27S, R2E. ELEV. 1352.87 M.S.L.  
ELEV. 165.47 CITY DATUM  
X = EXISTING BLOGS. TO BE REMOVED

RESERVES "A" THRU "D" SHALL PERMIT DRAINAGE, UTILITIES, WALKS,  
WATER FEATURES, LANDSCAPING, ENTRY MONUMENTS, GAZEBOS,  
PARKING AND RECREATIONAL FACILITIES.

RESERVE "E" SHALL PERMIT UTILITIES, ENTRY MONUMENTS,  
GUARD HOUSE AND LANDSCAPING.

ALL RESERVES ARE TO BE OWNED AND MAINTAINED BY A  
HOMEOWNERS ASSOCIATION.



DSWR, SANCHEZ OPER. DEP SCALE: 1"=100.00'  
01/19/95 9:58:13 PRELIM.DWG 11-30-1995 5:33:46 pm