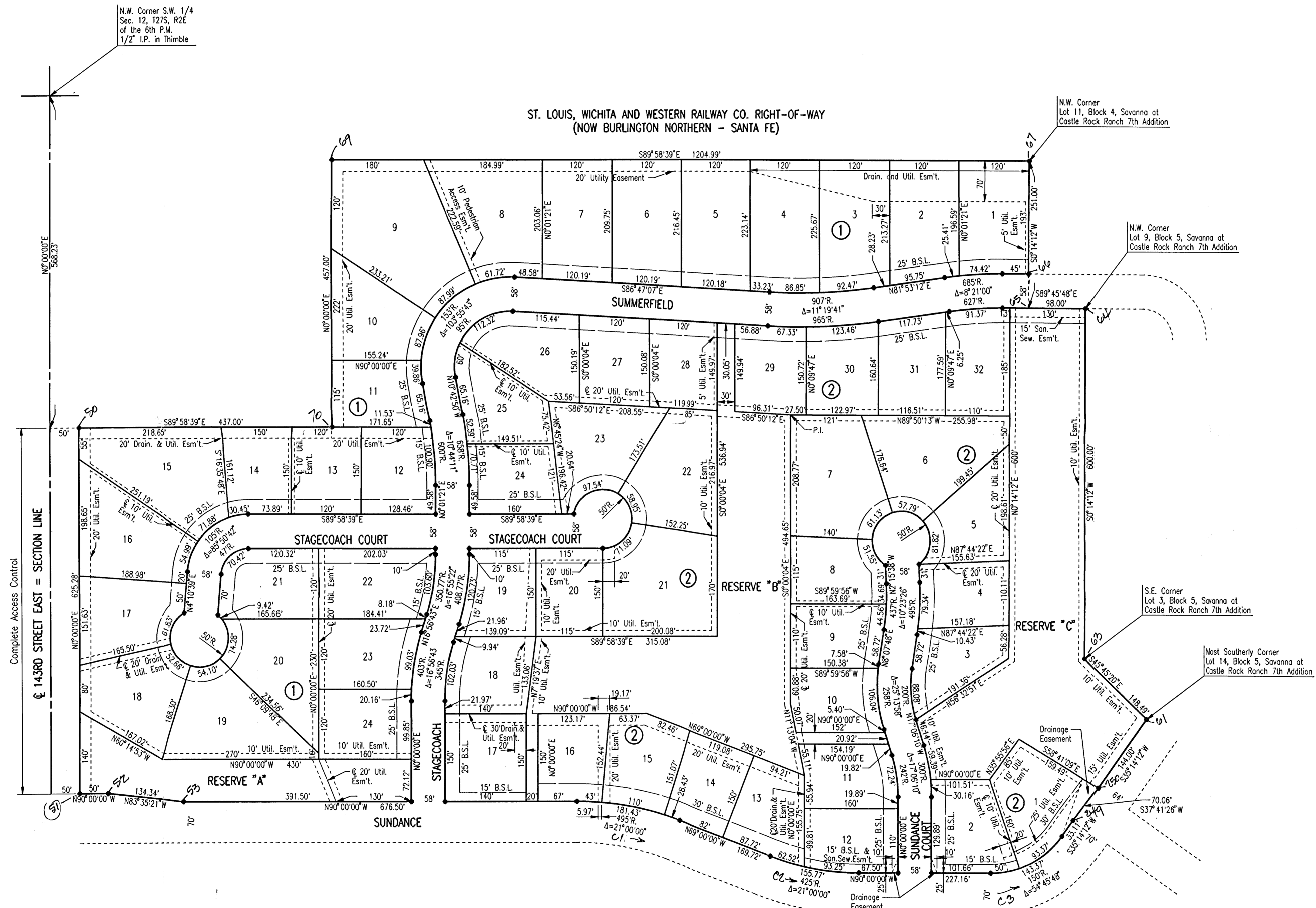


# SAVANNA AT CASTLE ROCK RANCH 9TH ADDITION TO SEDGWICK COUNTY, KANSAS



SCALE: 1"=100'

● = IRON SET

B.S.L. = BUILDING SETBACK LINE

B.M. - RAILROAD SPIKE IN H.L.P. 43' S.E. OF S.W. CORNER SEC. 12, T27S, R2E. ELEV.=1352.87 M.S.L.

B.M. - RAILROAD SPIKE (1.5' ABOVE GROUND) IN WEST FACE OF POWER POLE ON EAST R/W OF 143RD STREET EAST AT 835± NORTH OF & 13TH STREET NORTH. ELEV.=1348.66 M.S.L.

MINIMUM PAD ELEVATIONS (LOWEST OPENING) AS FOLLOWS:

BLOCK 2 LOTS	ELEVATION
1 THROUGH 6 AND 32	1350.2 M.S.L.
7 THROUGH 11, 13 THROUGH 22 AND LOTS 28 AND 29	1357.7 M.S.L.
LOT 12	1356.5 M.S.L.

DSNR: SANCHEZ OPER: DEP SCALE: 1"=100.00  
 C:\1997\97271\FINAL\_05-21-1998 11:11:38 am