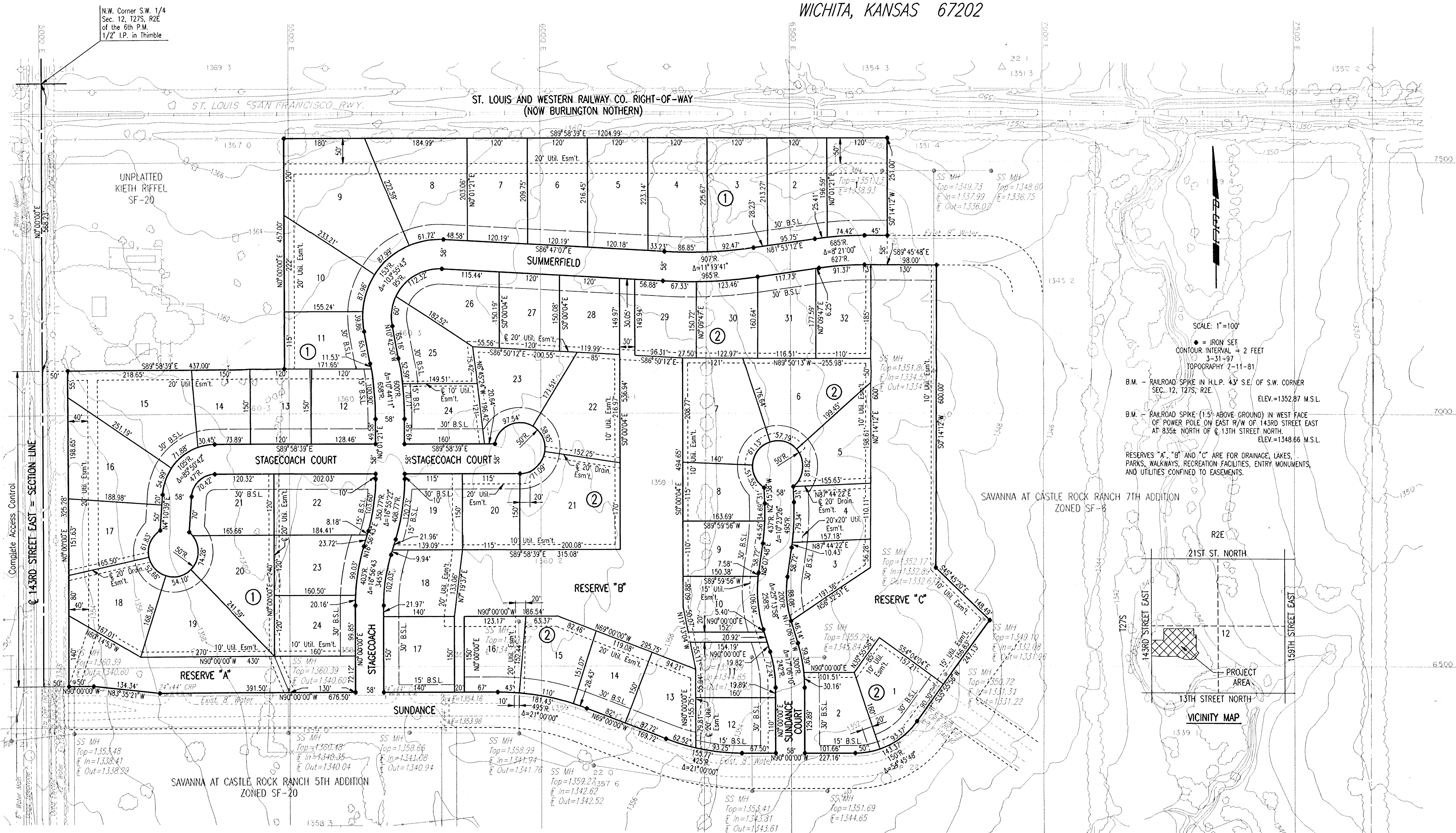


PRELIMINARY PLAT OF
SAVANNA AT CASTLE ROCK RANCH 9TH ADDITION
 TO WICHITA, SEDGWICK COUNTY, KANSAS

OWNER: K & N STEPHENSON AND LINDA L. STEPHENSON
 1450 SPORT OF KINGS
 WICHITA, KANSAS 67230

ENGINEER: PROFESSIONAL ENGINEERING CONSULTANTS, P.A.
 303 S. TOPEKA
 WICHITA, KANSAS 67202

DSNR: SANCHEZ OPER: DEP SCALE: 1"=100.00
 C:\1997\97271\PRELIM.DWG 03-28-1997 10:17:32 am



SCALE: 1"=100'
 ● = IRON SET
 CONTOUR INTERVAL = 2 FEET
 3-31-97
 TOPOGRAPHY 7-11-81
 B.M. - RAILROAD SPIKE IN H.L.P. 43' S.E. OF S.W. CORNER
 SEC. 12, T27S, R2E. ELEV.=1352.87 M.S.L.
 B.M. - RAILROAD SPIKE (15' ABOVE GROUND) IN WEST FACE
 OF POWER POLE ON EAST R/W OF 143RD STREET EAST
 AT 835' NORTH OF Q 13TH STREET NORTH. ELEV.=1348.66 M.S.L.
 RESERVES "A", "B" AND "C" ARE FOR DRAINAGE, LAKES,
 PARKS, WALKWAYS, RECREATION FACILITIES, ENTRY MONUMENTS,
 AND UTILITIES CONFINED TO EASEMENTS.

